

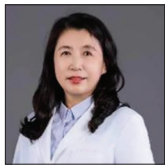


Research Article

Inhibition of lysine-specific histone demethylase 1A suppresses adenomyosis through reduction in ectopic endometrial stromal cell proliferation, migration, and invasion

Limei Cui, MBBS^{1,2}, Changmei Sang, MS³, Ruoqing Li, MBBS,⁴ Shuping Zhao, PhD¹

¹Department of Gynecology, Qingdao Women and Children's Hospital, Shandong University, Qingdao, ²Department of Gynecology, Qingzhou People's Hospital, Weifang, ³Department of Gynecology, Qingdao Women and Children's Hospital, Qingdao, ⁴Medical College, Qingdao University, Qingdao, Shandong, China.



*Corresponding author:

Shuping Zhao,
Department of Gynecology,
Qingdao Women and Children's
Hospital, Shandong University,
Qingdao, China.

woyaobsby@163.com

Received: 22 April 2024

Accepted: 22 October 2024

Published: 22 November 2024

DOI

10.25259/Cytojournal_48_2024

Quick Response Code:



ABSTRACT

Objective: Deep endometriosis is now referred to as adenomyosis externa, whereas adenomyosis is once known as endometriosis interna. Lysine-specific histone demethylase 1A (KDM1A, commonly LSD1) is a lysine demethylase that targets histone and non-histone proteins. This study aimed to assess how KDM1A affects the migration, invasion, and proliferation of adenomyosis-derived endometrial stromal cells (ESCs).

Material and Methods: Immunocytochemistry staining was used to identify primary ectopic endometrial stromal cells (EESCs) and eutopic endometrial stromal cells (EuESCs) were isolated and purified from patients with complete hysterectomy for adenomyosis. Cell counting kit-8 assay, colony formation, wound scratch, and transwell assays were used to investigate the effect of silencing KDM1A on the inhibition cell viability, colony, migration, and invasion, respectively. Mechanistic investigations were carried out by Western blot and quantitative real-time polymerase chain reaction (qRT-PCR).

Results: Vimentin staining was highly positive and cytokeratin staining was nearly negative in EESCs and EuESCs. KDM1A silencing reduced the ability of EESCs and EuESCs to proliferate ($P < 0.001$). The proliferation, motility, and invasiveness of EESCs and EuESCs were markedly reduced when KDM1A was silenced ($P < 0.001$). KDM1A silencing substantially downregulated invasion- and migration-related proteins or genes according to Western blot and qRT-PCR analysis ($P < 0.05$). EESCs and EuESCs with KDM1A silencing showed a higher reduction in these proteins than the control group ($P < 0.05$).

Conclusion: In adenomyosis, silencing KDM1A can limit the motility, invasiveness, and proliferation of EuESCs and EESCs. These outcomes could potentially correlate with the decreased expression levels of matrix metalloproteinases (MMP)-2, MMP-9, Fascin, and Erzin proteins.

Keywords: adenomyosis, lysine-specific histone demethylase 1A, endometrial stromal cells, proliferation, metastasis migration

INTRODUCTION

The epidemiology and pathophysiology of adenomyosis (endometriosis interna), a benign uterine condition that is common in women worldwide, are not well known.^[1-3] The condition

manifests as subfertility, pelvic discomfort, and a soft, diffusely enlarged uterus with abnormal uterine bleeding.^[4,5] About 20% of adenomyosis occurrences are documented in women under 40 years of age, with the remaining 80% occurring in women who are past the reproductive age (40–50 years).^[6,7] Adenomyosis is defined as essentially having ectopic endometrium within the myometrium, and this definition is comparable to endometriosis, which is defined as having ectopic endometrium outside of the uterine cavity. Although their sites vary, the main causes of the two diseases – ectopic endometrium – remain the same. As a result, endometriosis interna is the term once used to describe adenomyosis,^[8] presumably due to such a similarity. Unfortunately, few medications target adenomyopathy directly at present, making treatment difficult. Even though surgery is thought to be the best course of treatment for adenomyosis, it can be quite stressful for women who experience symptoms but are very desirous of becoming pregnant. Consequently, obtaining novel, efficient genes is critical to treat adenomyopathy. The histone lysine demethylase lysine-specific histone demethylase 1A (KDM1A), sometimes referred to as LSD1, was originally identified as demethylase H3K4me1/2 and H3K9me1/2 at target loci in a context-dependent manner.^[9,10] KDM1A acts as a coactivator or corepressor in terms of substrate specificity.^[11–13] However, the impact of KDM1A expression on the genesis of adenomyosis remains unknown. Numerous biological processes linked to the advancement of cancer have previously been demonstrated to require KDM1A, including proliferation,^[14] epithelial-mesenchymal transformation,^[15,16] senescence,^[17] stem-cell pluripotency maintenance,^[18,19] and multidrug resistance.^[20] Literature reports on several KDM1A inhibitors, some of which are undergoing trials for small-cell lung cancer.^[21,22] However, its role in advanced adenomyosis (endometriosis interna) is unknown. This study explored how KDM1A affects endometrial stromal cell (ESC) invasion, migration, and proliferation. The findings suggest a potential molecular pathway that controls KDM1A's effects on cell invasion and migration. This research offers a potential course of treatment for advanced adenomyosis.

MATERIAL AND METHODS

Tissue collection

Human endometrial tissues were collected from 20 patients undergoing total hysterectomy for adenomyosis at Qingzhou People's Hospital between November 2020 and October 2022. The median age of the patients was 44 years (range: 34–56 years). Histologic investigation verified the diagnosis, ruling out malignant cases. Each subject provided informed consent, and the Qingzhou People's Hospital, approved the

use of human tissues. This study was approved by the Ethics Committee of Qingzhou People's Hospital, with approval No. 2023020. This study strictly adhered to the Helsinki Declaration.

Primary cell isolation and culture

Eutopic and ectopic endometrial tissues were extracted from the uterus of each patient and transferred to a cold mixture containing 1% penicillin–streptomycin antibiotics (15140148, Gibco, Rockville, MD, USA) and Dulbecco's modified Eagle's medium (DMEM; 11965092, Gibco, Rockville, MD, USA) in equal proportions. The tissues were initially rinsed with phosphate-buffered saline (PBS), minced into small pieces (1 mm³), and incubated at 37°C in a shaking water bath with 0.5% collagenase II for 1 h. The dispersed cells were filtered through a 100 µm mesh to remove any remaining tissue fragments. Centrifugation was conducted at 1000 rpm for 5 min to collect the eutopic and ectopic ESCs (eutopic endometrial stromal cells [EuESCs] and ectopic endometrial stromal cells [EESCs], respectively), followed by two to three washes with PBS. The EuESCs and EESCs were cultured in DMEM (12491015, Gibco, Rockville, MD, USA) supplemented with 10% fetal bovine serum (FBS; A5670701, Gibco, Rockville, MD, USA) and 1% penicillin–streptomycin antibiotic solution (15140148, Gibco, Rockville, MD, USA). The cells were maintained in culture dishes at 37°C in a humidified atmosphere containing 5% carbon dioxide (CO₂) and 95% air. Cells from passages three to six were utilized for the subsequent experiments.

Cell characterization

A study has shown that cytokeratin and vimentin can be used to identify the characteristics of EuESCs and EESCs.^[23] In summary, after cells were seeded onto chamber slides, they were fixed for 30 min at 4°C with 4% paraformaldehyde. Next, endogenous peroxidase activity was blocked for 10 min at room temperature using 3.0% hydrogen peroxide. Afterward, the cells were immunostained for 1 h using primary antibody vimentin (1:500, ab92547, Abcam, Cambridge, MA, USA) and cytokeratin (1:500, ab53280, Abcam, Cambridge, MA, USA) antibodies. The second antibody goat Anti-Rabbit IgG H&L (HRP, ab6721, Abcam, Cambridge, MA, USA) was incubated for 1h under light protection. Subsequently, 3,3'-diaminobenzidine (DAB, ab64238, Abcam, Cambridge, MA, USA) was used to visualize immunoreactivity. An immune response to vimentin and cytokeratin was detected in the cytoplasm, and cells with yellowish-brown staining were identified as positive. The cell lines used in this study underwent short tandem repeat authentication, and the mycoplasma test results were negative.

Cell transfection

GenePharma (Shanghai, China) created the small interfering RNAs (short hairpin RNAs [shRNAs]) specific to KDM1A (sh-KDM1A), the negative control (sh-NC), and the plasmids for KDM1A overexpression. The shRNA sequences 5'GGAAAGAATCAAGGAGG-3' and 5'-GCTTGGAATGATCATCAAACA-3' were used to target KDM1A and a non-targeting shRNA control (sh-NC), respectively. Lipofectamine 3000 (L3000150, Invitrogen, Carlsbad, CA, USA) was transfected into the EESCs and EuESCs. The transfection efficacy was assessed after 24 h using Western blot and quantitative real-time polymerase chain reaction (qRT-PCR).

Cell viability assay

Cell counting kit-8 (CCK-8) test (C0037, Beyotime, Shanghai, China) was utilized to assess the viability of EuESCs and EESCs. In a 96-well plate, 5×10^3 EuESCs or EESCs were planted. Following the prescribed intervention, 10 μ L of CCK-8 reagent was added to each well to facilitate additional culture. Two hour later, the absorbance at 450 nm was measured using a microplate reader (iD5, SpectraMax, Molecular Devices, San Jose, California, USA).

Colony formation assay

First, EuESCs and EESCs were seeded at a low density of 500 cells per well into six well plates containing DMEM supplemented with 10% fetal bovine serum (FBS). The cells were incubated at 37°C in a humidified atmosphere with 5% CO₂ until visible colonies formed, typically taking 1–2 weeks. Subsequently, the cells were fixed with 4% polyformaldehyde, followed by staining with 0.5% crystal violet solution for 15–30 min. Images of the stained culture dishes were captured using an inverted light microscope (IX83, Olympus, Tokyo, Japan), and the number of colonies formed in each dish was counted.

Wound healing assay

The use of wound healing assay allowed for the detection of the migration potential of EuESCs and EESCs. In brief, six well plates were seeded with cells during the logarithmic phase, and the cells were then cultured until 95% cell fusion was reached. Next, the cell monolayer was gently scraped in a straight line using a disposable pipette tip. Following three rounds of washing in PBS, serum-free dulbecco's modified eagle medium (DMEM) was used to culture EuESCs and EESCs at 37°C. Images of the wound site were taken using an optical microscope (IX83, Olympus, Tokyo, Japan) at 0–24 h. The width of the open area was then assessed right away using ImageJ (1.8.0, National Institutes of Health, Bethesda, MD, USA) to estimate motility.

Transwell assay

Matrigel invasion experiment was utilized to assess EuESC and EESC invasion. A Matrigel-coated upper chamber with 8 μ m pore size was injected with resuspended EuESCs and EESCs in 200 μ L serum-free media. DMEM with 10% FBS 600 μ L, S9020, Solarbio, Beijing, China, was introduced to the lower chamber to serve as the chemoattractant. Following a 24-h incubation period, the cells in the invasion chamber's bottom were fixed in 4% paraformaldehyde, dyed with crystal violet for 20 min, and captured on camera using a light microscope (IX83, Olympus, Tokyo, Japan).

qRT-PCR analysis

EuESCs and EESCs were treated with TRIzol reagent (15596026CN, Thermo Scientific, Wilmington, Massachusetts, USA) to extract the total RNA. Using the Reverse Transcription System Kit (4366597, Thermo Scientific, Wilmington, Massachusetts, USA), 1 μ g of total RNA was used to create the first strand of cDNA. The QuantStudioTM5 RT-PCR System (Thermo Scientific) was used to detect the messenger RNA (mRNA) levels, and KAPA SYBR FAST UNI qPCR Kits (#KK4601, Kapa Biosystems, Boston, MA, USA) were used to quantify them. Every experiment was carried out in triplicate, with actin expression serving as the internal control. Calculated using the $2^{-\Delta\Delta CT}$ method. The primer sequences are shown in Table 1.

Western blot analysis

The total protein was extracted from the cells using radioimmunoprecipitation assay lysis buffer (P0013B, Beyotime, Shanghai, China). The Bicinchoninic Acid Assay (BCA) kit (P0009, Beyotime, Shanghai, China) was used to measure the protein concentration, and 40 μ g of protein per lane was separated using sodium dodecyl sulfate polyacrylamide gel electrophoresis. Afterward, the proteins were placed on polyvinylidene fluoride membranes. The membranes were

Table 1: Primer sequences in the study.

Name	Primer sequences
KDM1A	F:5'-GCTTGGCCAACCTCTCAGAA-3' R:5'-GACAGTGTTCAGCTTGTCGGTTG-3'
Fascin	F:5'-CACAGGCAAATACTGGACGGT-3' R:5'-CCACCTTGTTATAGTCGCAGAAC-3'
Ezrin	F:5'-GCUCAAAGAUAUUGCUAUGTT-3' R:5'-CAU AGCAUUAUCUUUGAGCTT-3'
GAPDH	F:5'-GGAGCGAGATCCCTCCAAAAT-3' R:5'-GGCTGTTGTCATACTTCTCATGG-3'
KDM1A: Lysine-specific histone demethylase 1A, GAPDH: Glyceraldehyde-3-phosphate dehydrogenase, A: Adenosine, C: Cytosine, G: Guanin, T: Thymine	

blocked for 2 h with 5% skim milk, and then, they were incubated for the entire night at 4°C with primary antibodies KDM1A (ab253727), Fascin (ab126772), Ezrin (ab40839), metalloproteinases (MMP)-2 (ab254516), MMP-9 (ab76003), and glyceraldehyde-3-phosphate dehydrogenase (GAPDH) (ab8245). They were obtained from Abcam (Cambridge, MA, USA). The membranes were subjected to an incubation period using goat anti-rabbit secondary antibody (7074, CST, Ma, BSN, USA). Then, an enhanced chemiluminescence kit (BL520b, Biosharp Life Science, Hefei, Anhui, China) and BeyoImager™ 600 Chemiluminescent Imaging System (EI600, Beyotime Biotechnology, Shanghai, China) were used to observe the bands, and ImageJ software (version 3.0, NIH, Bethesda, MD, USA) was used for analysis.

Statistical analysis

Data analysis was performed using SPSS (version 16.0, IBM Corporation, New York City, NY, USA) statistical software. One-way analysis of variance with Tukey's multiple comparison test was used for multiple comparisons. $P < 0.05$ indicated statistical significance.

RESULTS

EuESCs and EESCs' phenotypic traits were determined

Vimentin and cytokeratin immunocytochemical staining was performed to determine if the separated cells were ESCs. The cytokeratin positive signal of EuESCs and EESCs was weak, while the mesenchymal cell marker vimentin positive signal was strong, indicating that these cells were ESCs [Figure 1a and b].

KDM1A expression was significantly increased in ectopic endometrial tissues

Quantitative real-time polymerase chain reaction (qRT-PCR) was used to identify important histone methylation modifiers that regulate ectopic endometrium. The results showed that ectopic endometrial tissues had significantly greater levels of KDM1A mRNA expression than the adherent tissues [Figure 2a]. Therefore, KDM1A may be involved in the upkeep of ectopic endometrial illness. Next, Western blot was applied to detect KDM1A protein expression in ectopic endometrial tissues (12 cases) and normal tissues (11 cases). The ectopic endometrial disease tissues had higher levels of KDM1A protein expression than the normal tissues, as shown in Figure 2b and c. These findings showed that KDM1A is crucial to the development of ectopic endometrial disease ($P < 0.01$).

KDM1A promoted the proliferation of EuESCs and EESCs

The overexpression of KDM1A in EuESCs and EESCs was determined. The Western blot and qRT-PCR results showed significantly higher expression of KDM1A in

the OE-KDM1A group than in the vector ($P < 0.001$) [Figure 3a-f]. The enhanced cellular viability due to KDM1A overexpression in EuESCs and EESCs was validated. Figure 3g demonstrated that the KDM1A overexpression group had markedly increased cell viability as compared with the vector in EuESCs ($P < 0.001$). The effects of KDM1A on the proliferation of EuESCs were evaluated using colony formation assay. Compared with vector, KDM1A overexpression significantly enhanced colony formation ($P < 0.001$) [Figure 3h-i]. In EESCs, cell viability and colony formation showed the same trend as in EuESCs ($P < 0.001$) [Figure 3j-l].

KDM1A promoted the migration and invasion of EuESCs and EESCs

The effects of KDM1A on the proliferation of EuESCs and EESCs were determined by scratch and transwell assays. Figure 4a-h shows that the overexpression of KDM1A significantly increased the migration and invasion abilities of EuESCs and EESCs ($P < 0.01$, $P < 0.001$).

Silenced KDM1A inhibited the proliferation of EuESCs and EESCs *in vitro*

KDM1A expression was suppressed in EuESC and EESC lines using shRNAs to corroborate the control of KDM1A. The KDM1A knockdown group showed a decrease in KDM1A expression in EuESCs and EESCs according to qRT-PCR and Western blot ($P < 0.05$) [Figure 5a-f]. Figure 5g-l illustrates how the KDM1A silence group's EuESC and EESC activity and proliferation were much lower than those of the sh-NC group ($P < 0.001$). The findings implied that silencing KDM1A can inhibit the proliferation of EESC and EuESC.

KDM1A silencing suppressed the migration of EuESCs and EESCs

The EuESCs and EESCs were transfected with sh-KDM1A, control, and sh-NC for 24 h before the cell experiment. The results of wound healing assay demonstrated that compared with the sh-NC, the migration of EuESCs and EESCs was significantly reduced in the sh-KDM1A group ($P < 0.001$) [Figure 6a-d]. As shown in Figure 6e-j, qRT-PCR and Western blot analysis suggested that KDM1A silencing reduced the expression levels of Fascin and Ezrin proteins in EuESCs and EESCs ($P < 0.05$). Research indicated that the expression levels of Fascin and Ezrin proteins are positively correlated with the metastasis of non-small cell lung cancer.^[24] These findings showed that KDM1A silencing had a greater suppressive effect on the migration of EuESCs and EESCs than sh-NC treatment.

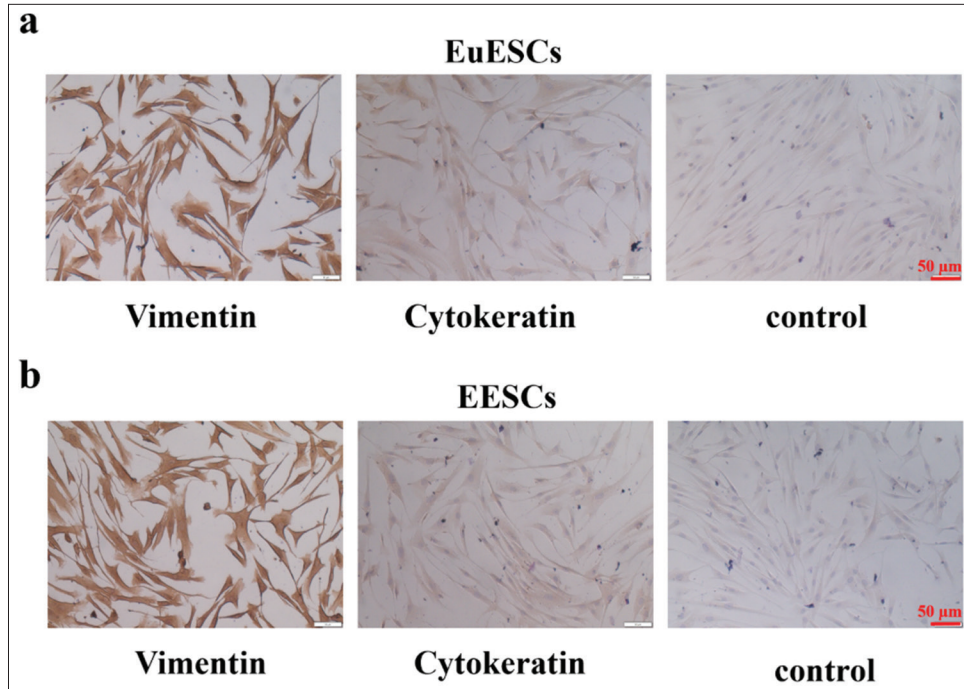


Figure 1: EuESCs and EESCs' phenotypic traits were determined. (a) EuESCs' phenotypic traits of vimentin and cytokeratin. (b). EESCs' phenotypic traits of vimentin and cytokeratin. $n = 6$. (EESCs: Ectopic endometrial stromal cells, EuESCs: Eutopic endometrial stromal cells.)

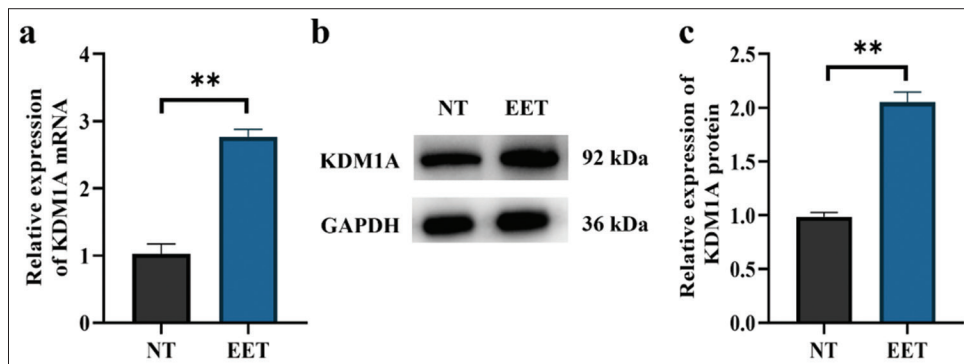


Figure 2: KDM1A expression was significantly increased in ectopic endometrial tissues. (a) KDM1A expression in endometrium tissues. (b and c) KDM1A protein expression tested by Western blot. $n = 20$. $**P < 0.01$. (KDM1A: Lysine-specific histone demethylase 1A, GAPDH: Glyceraldehyde-3-phosphate dehydrogenase, NT: Normal tissues, EET: Ectopic endometrial tissues)

KDM1A silencing inhibited the invasion in EuESCs and EESCs

The findings demonstrated that KDM1A silencing exerted a higher inhibition of invasion on EuESCs and EESCs than control treatment ($P < 0.001$, [Figure 7a-d]). This suggests that after KDM1A silencing treatment, the number of invaded cells in both EuESCs and EESCs was greatly reduced ($P < 0.001$). After EuESCs and EESCs were transfected with sh-KDM1A, the expression levels of MMP-2 and MMP-9 proteins were significantly decreased ($P < 0.05$, [Figure 7e-h]. Xu *et al.*'s^[25]

study suggested that the upregulation of MMP-2 and MMP-9 protein expression levels is positively correlated with the migration and invasion of EESCs. These findings suggest that KDM1A silencing inhibited the invasion of EuESCs and EESCs.

DISCUSSION

This work showed that patients with ectopic endometrial disease had overexpressed KDM1A. The proliferation, migration, and invasion of EuESCs and EESCs were facilitated by KDM1A upregulation. KDM1A also showed a

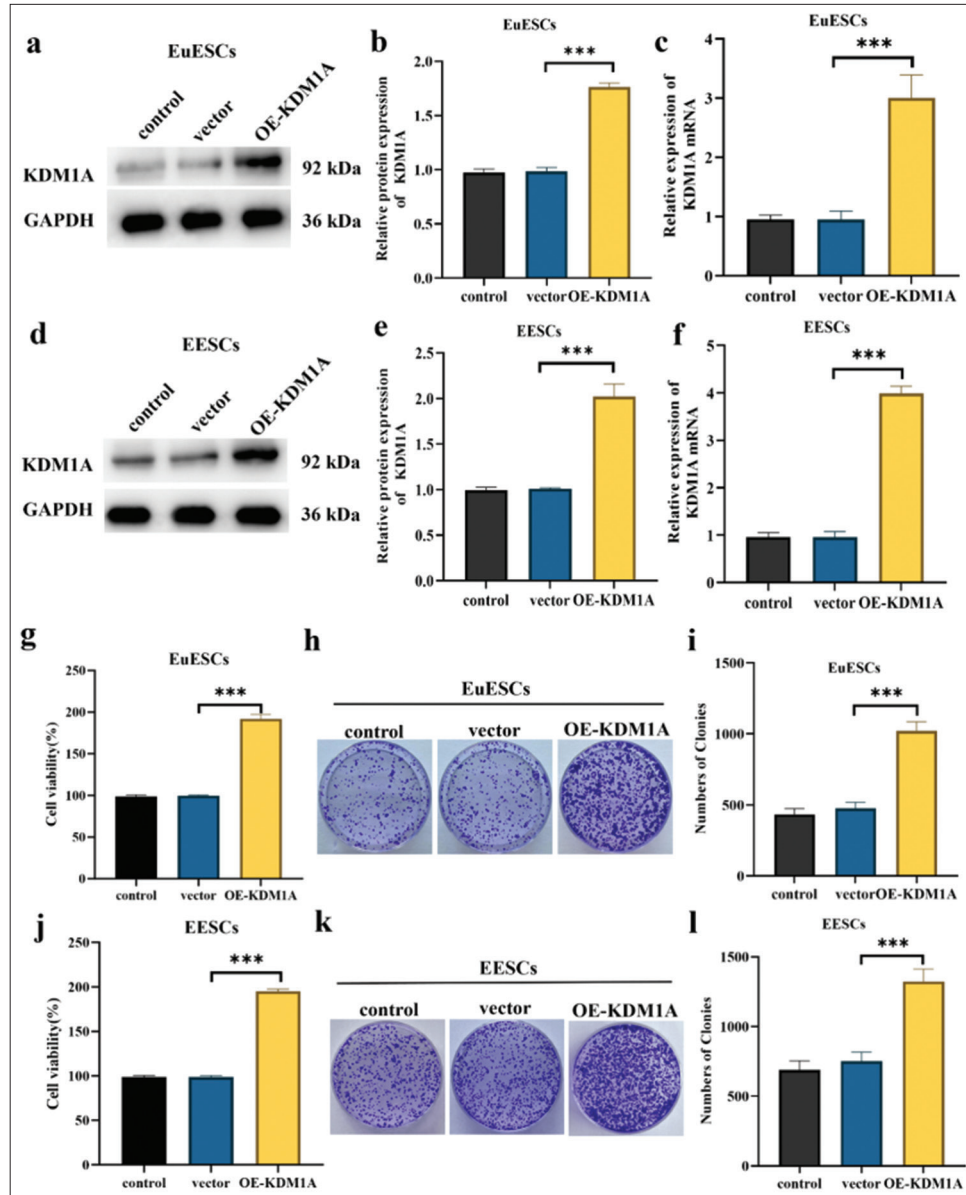


Figure 3: KDM1A promoted proliferation of EuESCs and EESCs. (a-c) Western blot and qRT-PCR determination of the mRNA and protein expression levels of KDM1A in EuESCs. (d-f) Western blot and qRT-PCR determination of the mRNA and protein expression levels of KDM1A in EESCs. (g) Cell viability of EuESCs determined by CCK-8 assay. Control group 100% cell viability as control. (h-i) Colony formation capacity of EuESCs. (j) Cell viability of EESCs determined by CCK-8 assay. Control group 100% cell viability as control. (k-l) Cell viability of EESCs determined by CCK-8 assay. $n = 6$. $***P < 0.001$. (KDM1A: Lysine-specific histone demethylase 1A, GAPDH: Glyceraldehyde-3-phosphate dehydrogenase, EESCs: Ectopic endometrial stromal cells, EuESCs: Eutopic endometrial stromal cells.)

favorable correlation with the expression levels of invasion and migratory proteins. However, the invasion, migration, and proliferation of EuESCs and EESCs were inhibited by KDM1A silencing.

Among the gynecological disorders that frequently coexist are adenomyosis and endometriosis.^[26] Some studies

estimated that 80–90% of patients with endometriosis have adenomyosis.^[27] Less than half of the participants with endometriosis in other investigations had adenomyosis.^[28] The authors presented evidence of a variation in the occurrence of endometriosis based on the myometrial location of the adenomyosis lesion.^[29,30] *In vivo*, adenomyotic Eutopic

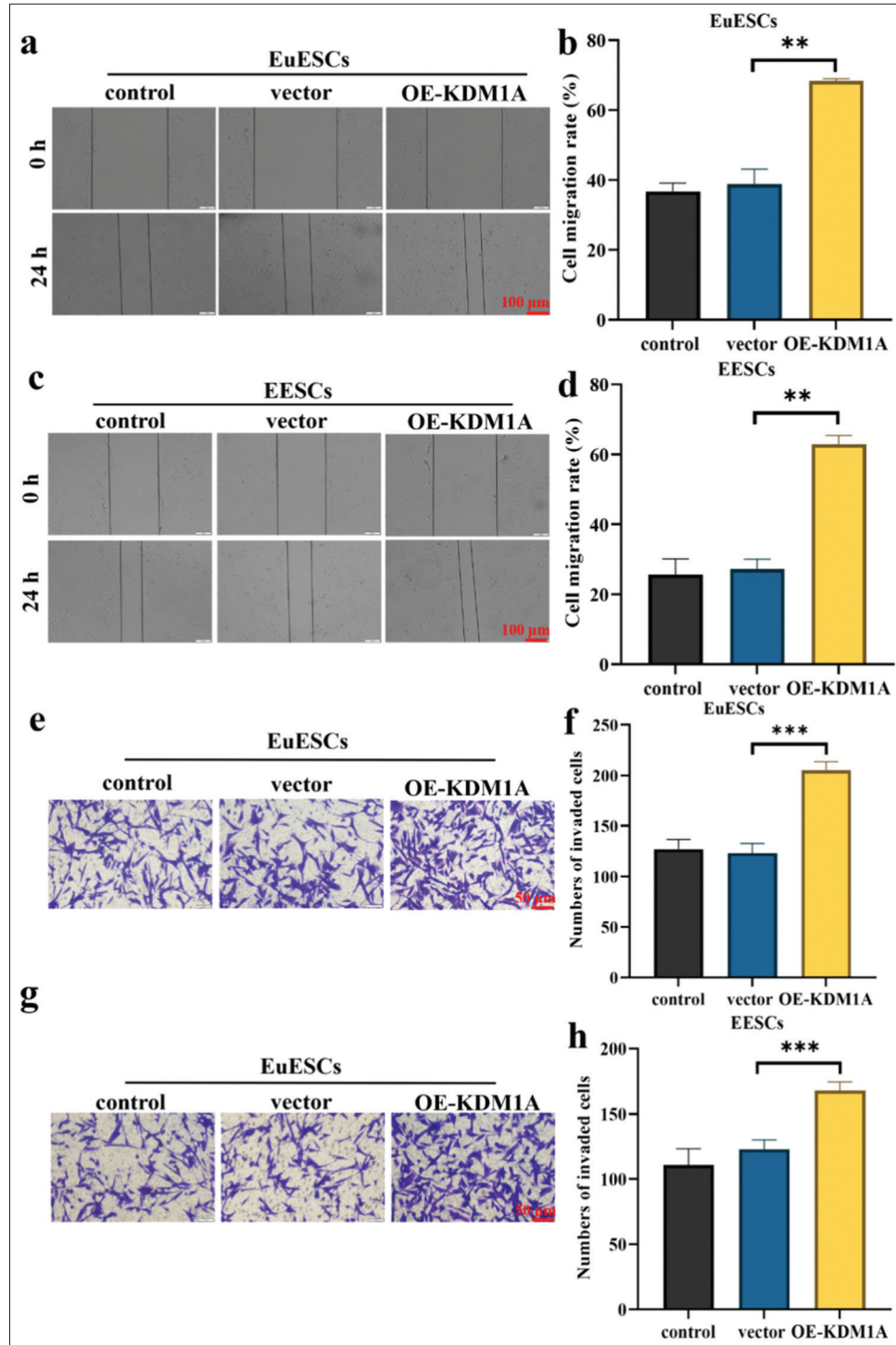


Figure 4: KDM1A promoted migration and invasion of EuESCs and EESCs. (a-d) Cell migration assay. (e-h) Cell invasion assay. $n = 6$. ** $P < 0.01$, *** $P < 0.001$. (KDM1A: Lysine-specific histone demethylase 1A, GAPDH: Glyceraldehyde-3-phosphate dehydrogenase, EESCs: Ectopic endometrial stromal cells, EuESCs: Eutopic endometrial stromal cells.)

endometrium stromal fibroblasts (eSFs) exhibited reduced caveolin (CAV1) expression, and eSF and eEC depletion of CAV1 exhibited markedly increased proliferation, migration,

and invasion.^[31] The enlargement of the nearby ectopic myometrium indicated that cell proliferation in adenomyosis tissues is a frequent phenomenon.^[30] EuESCs and EESCs

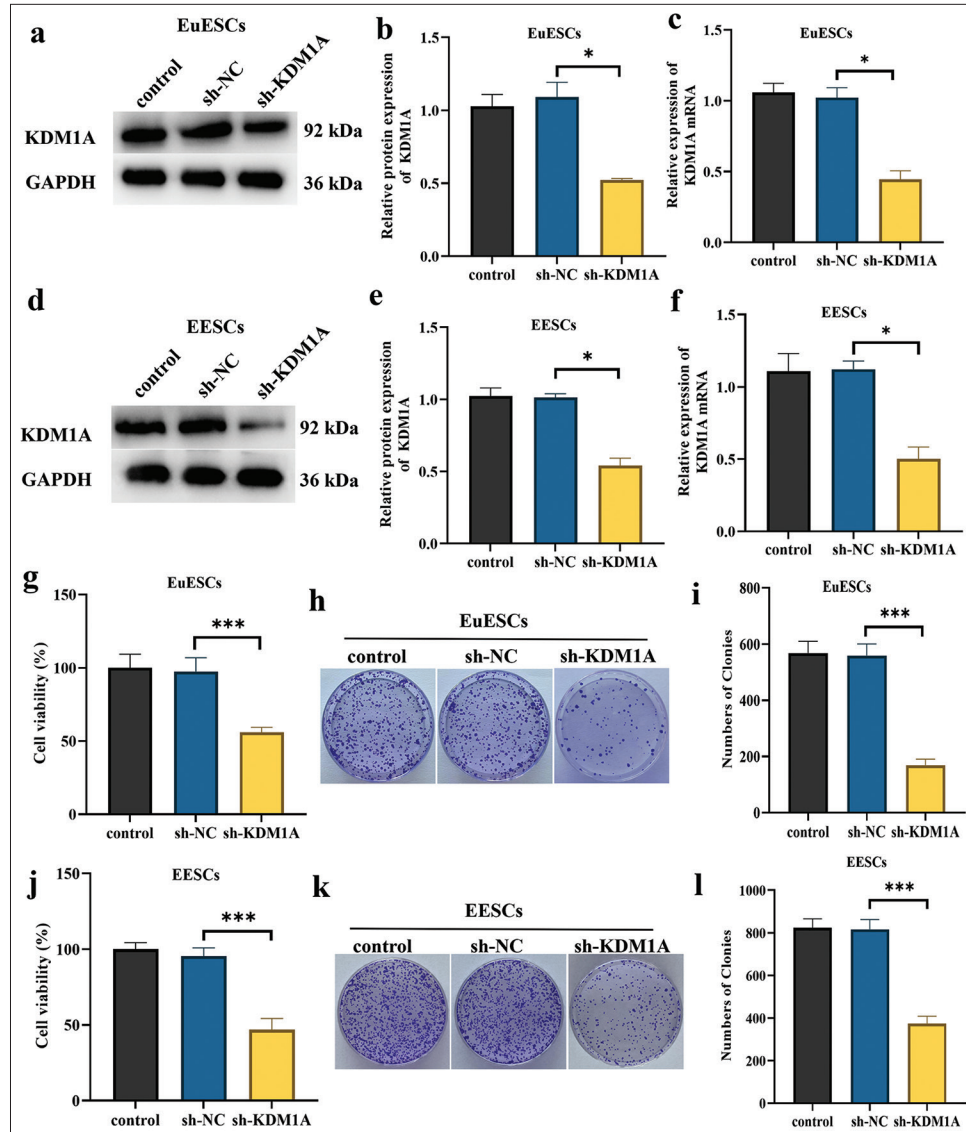


Figure 5: Silencing KDM1A inhibited the proliferation of EuESCs and EESCs *in vitro*. (a-c). Western blot and qRT-PCR determination of the mRNA and protein expression levels of KDM1A in EuESCs. (d-f). Western blot and qRT-PCR determination of the mRNA and protein expression levels of KDM1A in EESCs. (g). Cell viability of EuESCs determined by CCK-8 assay. Control group 100% cell viability as control. (h-i). Cell migration assay of EuESCs. (j). Cell viability of EuESCs determined by CCK-8 assay. Control group 100% cell viability as control. (k-l) Cell viability of EESCs determined by CCK-8 assay. Control group 100% cell viability as control. (k-l) Cell viability of EESCs determined by CCK-8 assay. $n = 6$. * $P < 0.05$, *** $P < 0.001$. (KDM1A: Lysine-specific histone demethylase 1A, GAPDH: Glyceraldehyde-3-phosphate dehydrogenase, EESCs: Ectopic endometrial stromal cells, EuESCs: Ectopic endometrial stromal cells, qRT-PCR: quantitative real-time polymerase chain reaction)

isolated from each patient's ectopic and ectopic endometrial tissues were chosen in the present study.

KDM1A is essential for multiple oncogenic processes, including epithelial-mesenchymal transition; chemoresistance; and invasion, migration, proliferation, and survival of cells.^[32] KDM1A is significantly expressed in many tumor types and closely linked to the development of malignancies.^[33] The present work investigated the critical role that KDM1A plays in the development of adenomyosis.

The results showed that ectopic endometrial tissues had a high expression of KDM1A. Additional mechanism exploration studies revealed that KDM1A overexpression may enhance the malignant biological characteristics of EuESCs and EESCs by promoting proliferation, migration, and invasion. Research demonstrated that KDM1A silencing enhanced the effectiveness of anti-CD47/PD-L1 immunotherapy in the treatment of cervical cancer.^[34] The present study showed that KDM1A silencing inhibited

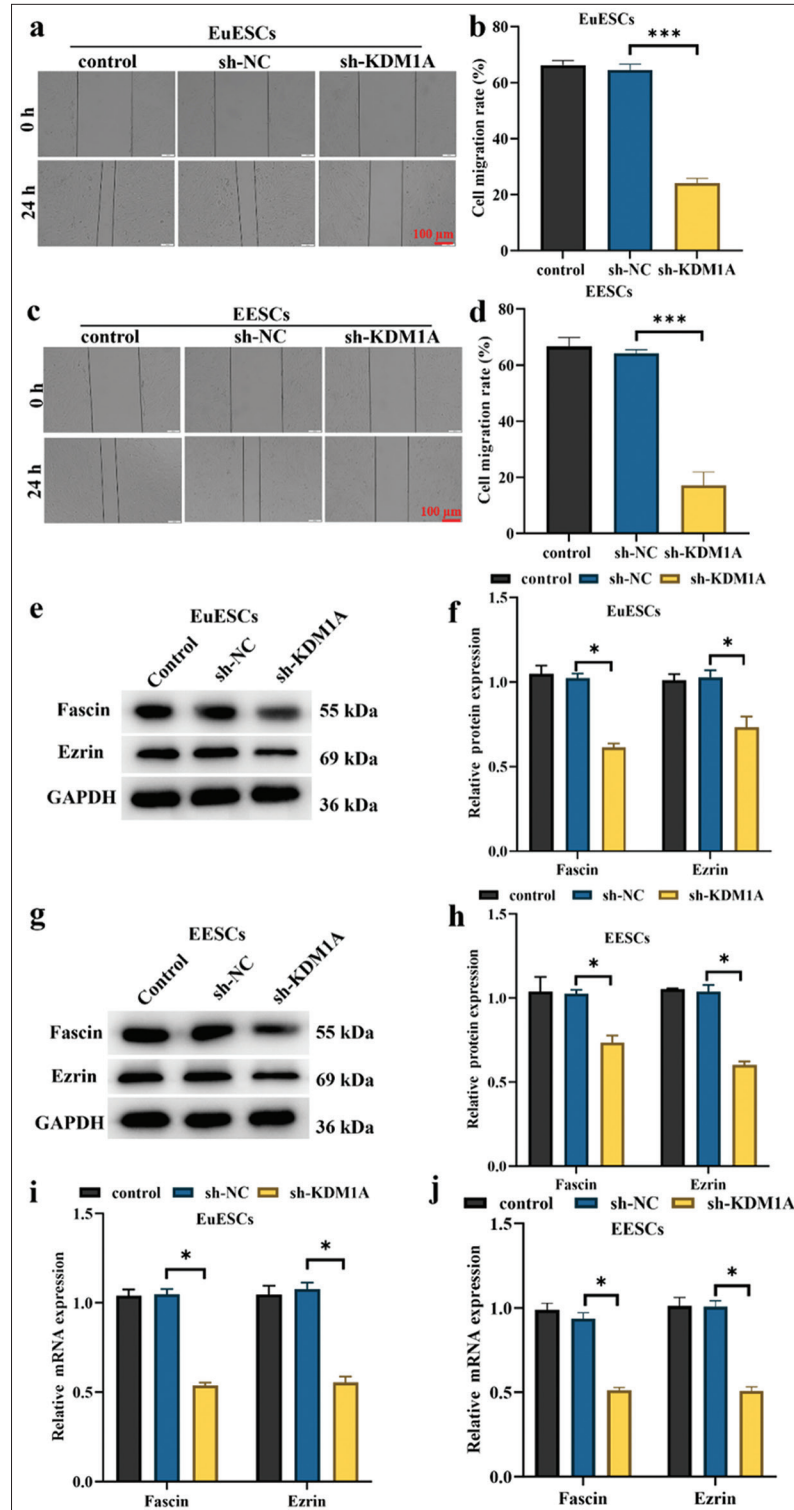


Figure 6: KDM1A silencing suppressed the migration of EuESCs and EESCs. (a-d) Cell migration assessed by wound healing assay. (e-h) Western blot determination of the expression levels of Fascin and Ezrin. (i and j) qRT-PCR evaluation of Fascin and Ezrin. $n = 6$. * $P < 0.05$, *** $P < 0.001$. (KDM1A: Lysine-specific histone demethylase 1A, GAPDH: Glyceraldehyde-3-phosphate dehydrogenase, EESCs: Ectopic endometrial stromal cells, EuESCs: Eutopic endometrial stromal cells.)

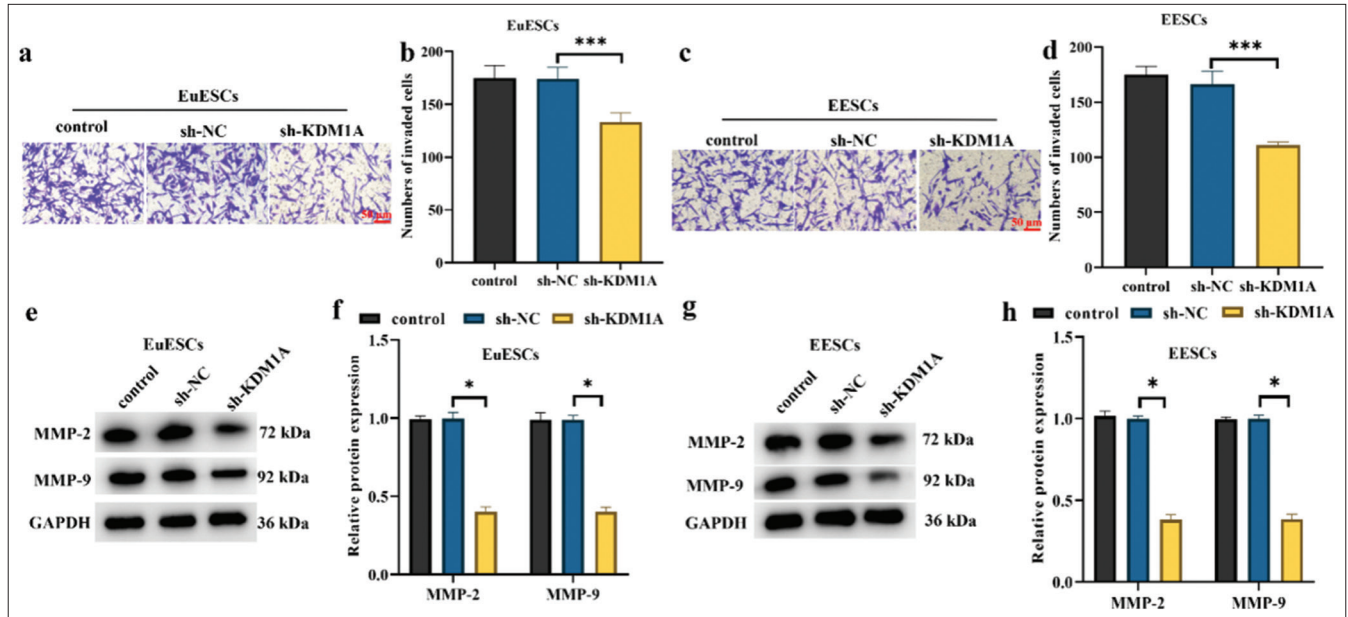


Figure 7: KDM1A silencing inhibited the invasion in EuESCs and EESCs. (a-d) Representative images and bar graphs for Tanswell invasion assay in EuESCs and EESCs. (e-h) Western blot detection of invasion markers in EuESCs and EESCs. $n = 6$. * $P < 0.05$, *** $P < 0.001$. (KDM1A: Lysine-specific histone demethylase 1A, GAPDH: Glyceraldehyde-3-phosphate dehydrogenase, EESCs: Ectopic endometrial stromal cells, EuESCs: Eutopic endometrial stromal cells.)

cell proliferation, migration, and invasion, consistent with previous reports.

The histone demethylase activity of KDM1A can activate or repress genes involved in adipocyte differentiation.^[35] By demethylating H3K4me1/2, KDM1A can inhibit the transcription of genes that suppress adipogenesis. KDM1A may interact with key adipogenic transcription factors, such as peroxisome proliferator-activated receptor gamma and CCAAT/enhancer-binding protein alpha, by modulating their activity and promoting the expression of adipogenic genes.^[36] Besides histones, KDM1A can demethylate non-histone proteins, affecting various signaling pathways and protein-protein interactions that are crucial for adipocyte differentiation and lipid metabolism.^[37] KDM1A-mediated histone demethylation can lead to epigenetic reprogramming of adipocyte precursor cells, thereby enhancing their differentiation into mature adipocytes and impacting cell identity and function.^[38]

This study has several limitations. First, the primary EESCs and EuESCs were isolated from patients undergoing complete hysterectomy for adenomyosis, which may limit the generalizability of the findings to all patients with adenomyosis. Second, while *in vitro* assays provide valuable insights, they may not fully replicate the complex *in vivo* environment. Therefore, the observed effects of KDM1A silencing on cell proliferation, migration, and invasion need to be validated in animal models or clinical settings. Third, the study primarily focused on KDM1A's role in regulating

specific proteins, such as MMP-2, MMP-9, Fascin, and Erzin, potentially overlooking other pathways and mechanisms that may contribute to the observed cellular behavior. Finally, the sample size for primary cell cultures may be limited, which could impact the statistical power and reproducibility of the results. Future research should aim to address these limitations by expanding the scope and depth of investigation. Larger and more diverse patient cohorts should be included to enhance the generalizability of the findings. *In vivo* studies using animal models of adenomyosis could provide a more comprehensive understanding of KDM1A's role in disease progression and its potential as a therapeutic target. Further mechanistic studies should explore additional pathways and molecular interactions affected by KDM1A to uncover a broader spectrum of its biological functions. Investigating the long-term effects of KDM1A inhibition *in vivo* could be crucial to determine its potential therapeutic efficacy and safety. Finally, exploring combinatorial therapeutic approaches that target KDM1A, along with other key molecules involved in adenomyosis, could yield more effective treatment strategies for this condition.

SUMMARY

KDM1A expression was upregulated in EuESCs and EESCs, promoting invasion, migration, and proliferation. However, more *in vivo* research is needed to assess KDM1A's possible therapeutic impact and potential signaling pathways in adenomyosis.

AVAILABILITY OF DATA AND MATERIALS

The data that support the findings of this study are available from the corresponding author upon reasonable request.

ABBREVIATIONS

KDM1A – Lysine-specific histone demethylase 1A
 ESCs – Endometrial stromal cells
 EESCs – Ectopic endometrial stromal cells
 EuESCs – Eutopic endometrial stromal cells
 CCK-8 – Counting Kit-8
 qRT-PCR – Quantitative real-time polymerase chain reaction
 MMP – Matrix metalloproteinase
 DMEM – Dulbecco's modified Eagle's medium
 PBS – Phosphate-buffered saline
 FBS – Fetal bovine serum
 DAB 3 – 3'-diaminobenzidine
 BCA – Bicinchoninic Acid Assay
 SDS-PAGE – Sodium dodecyl sulfate polyacrylamide gel
 PVDF – Polyvinylidene fluoride
 ECL – Enhanced chemiluminescence

AUTHOR CONTRIBUTIONS

LMC and RQL: Designed the research study; SPZ and CMS: Performed the research; LMC and SPZ: Collected and analyzed the data. All authors have been involved in drafting the manuscript and all authors have been involved in revising it critically for important intellectual content. All authors give final approval of the version to be published. All authors have participated sufficiently in the work to take public responsibility for appropriate portions of the content and agreed to be accountable for all aspects of the work in ensuring that questions related to its accuracy or integrity.

ETHICS APPROVAL AND CONSENT TO PARTICIPATE

This study has been approved by the ethics committee of Qingzhou People's Hospital, approval No. 2023020. This study obtained informed consent from the patients and strictly adhered to the Helsinki Declaration.

FUNDING

Not applicable.

CONFLICT OF INTEREST

The authors declare no conflict of interest.

EDITORIAL/PEER REVIEW

To ensure the integrity and highest quality of CytoJournal publications, the review process of this manuscript was

conducted under a **double-blind model** (authors are blinded for reviewers and vice versa) through an automatic online system.

REFERENCES

- Vannuccini S, Petraglia F. Recent advances in understanding and managing adenomyosis. *F1000Res* 2019;8:F1000 Faculty Rev-283.
- Vannuccini S, Tosti C, Carmona F, Huang SJ, Chapron C, Guo SW, *et al.* Pathogenesis of adenomyosis: An update on molecular mechanisms. *Reprod Biomed Online* 2017;35:592-601.
- García-Solares J, Donnez J, Donnez O, Dolmans MM. Pathogenesis of uterine adenomyosis: Invagination or metaplasia? *Fertil Steril* 2018;109:371-9.
- Achanna KS, Nanda J. Evaluation and management of abnormal uterine bleeding. *Med J Malaysia* 2022;77:374-83.
- Gordts S, Grimbizis G, Campo R. Symptoms and classification of uterine adenomyosis, including the place of hysteroscopy in diagnosis. *Fertil Steril* 2018;109:380-8.e381.
- Upton K, Missmer SA. Epidemiology of adenomyosis. *Semin Reprod Med* 2020;38:89-107.
- Protopapas A, Grimbizis G, Athanasiou S, Loutradis D. Adenomyosis: Disease, uterine aging process leading to symptoms, or both? *Facts Views Vis Obgyn* 2020;12:91-104.
- Guo SW. The pathogenesis of adenomyosis vis-à-vis endometriosis. *J Clin Med* 2020;9:485.
- Shi Y, Lan F, Matson C, Mulligan P, Whetstone JR, Cole PA, *et al.* Histone demethylation mediated by the nuclear amine oxidase homolog LSD1. *Cell* 2004;119:941-53.
- Metzger E, Wissmann M, Yin N, Müller JM, Schneider R, Peters AH, *et al.* LSD1 demethylates repressive histone marks to promote androgen-receptor-dependent transcription. *Nature* 2005;437:436-9.
- Venkata PP, Chen Y, Alejo S, He Y, Palacios BE, Loeffel I, *et al.* KDM1A inhibition augments the efficacy of rapamycin for the treatment of endometrial cancer. *Cancer Lett* 2022;524:219-31.
- Ismail T, Lee HK, Kim C, Kwon T, Park TJ, Lee HS. KDM1A microenvironment, its oncogenic potential, and therapeutic significance. *Epigenetics Chromatin* 2018;11:33.
- Maiques-Diaz A, Somervaille TC. LSD1: Biologic roles and therapeutic targeting. *Epigenomics* 2016;8:1103-16.
- Lian Y, Yan C, Lian Y, Yang R, Chen Q, Ma D, *et al.* Long intergenic non-protein-coding RNA 01446 facilitates the proliferation and metastasis of gastric cancer cells through interacting with the histone lysine-specific demethylase LSD1. *Cell Death Dis* 2020;11:522.
- Lin T, Ponn A, Hu X, Law BK, Lu J. Requirement of the histone demethylase LSD1 in Snai1-mediated transcriptional repression during epithelial-mesenchymal transition. *Oncogene* 2010;29:4896-904.
- Ferrari-Amorotti G, Fragiasso V, Esteki R, Prudente Z, Soliera AR, Cattalani S, *et al.* Inhibiting interactions of lysine demethylase LSD1 with snail/slug blocks cancer cell invasion. *Cancer Res* 2013;73:235-45.
- Yu Y, Schleich K, Yue B, Ji S, Lohneis P, Kemper K, *et al.* Targeting the senescence-overriding cooperative activity of structurally unrelated H3K9 demethylases in melanoma.

- Cancer Cell 2018;33:322-36.e328.
18. Wu Y, Wang Y, Yang XH, Kang T, Zhao Y, Wang C, *et al.* The deubiquitinase USP28 stabilizes LSD1 and confers stem-cell-like traits to breast cancer cells. *Cell Rep* 2013;5:224-36.
 19. Smitheman KN, Severson TM, Rajapurkar SR, McCabe MT, Karpnich N, Foley J, *et al.* Lysine specific demethylase 1 inactivation enhances differentiation and promotes cytotoxic response when combined with all-trans retinoic acid in acute myeloid leukemia across subtypes. *Haematologica* 2019;104:1156-67.
 20. Lei ZJ, Wang J, Xiao HL, Guo Y, Wang T, Li Q, *et al.* Lysine-specific demethylase 1 promotes the stemness and chemoresistance of Lgr5(+) liver cancer initiating cells by suppressing negative regulators of β -catenin signaling. *Oncogene* 2015;34:3188-98.
 21. Zhang X, Wang X, Wu T, Yin W, Yan J, Sun Y, *et al.* Therapeutic potential of targeting LSD1/KDM1A in cancers. *Pharmacol Res* 2022;175:105958.
 22. Karakaidos P, Verigos J, Magklara A. LSD1/KDM1A, a gate-keeper of cancer stemness and a promising therapeutic target. *Cancers (Basel)* 2019;11:1821.
 23. Song Y, Joshi NR, Vegter E, Hrbek S, Lessey BA, Fazleabas AT. Establishment of an immortalized endometriotic stromal cell line from human ovarian endometrioma. *Reprod Sci* 2020;27:2082-91.
 24. Kolegova ES, Kakurina GV, Kostromitskiy DN, Dobrodeev AY, Kondakova IV. Increases in mRNA and protein levels of the genes for the actin-binding proteins profilin, fascin, and ezrin promote metastasis in non-small cell lung cancer. *Mol Biol (Mosk)* 2020;54:285-92.
 25. Xu W, Song Y, Li K, Zhang B, Zhu X. Quercetin inhibits adenomyosis by attenuating cell proliferation, migration and invasion of ectopic endometrial stromal cells. *Drug Des Devel Ther* 2020;14:3815-26.
 26. Chapron C, Marcellin L, Borghese B, Santulli P. Rethinking mechanisms, diagnosis and management of endometriosis. *Nat Rev Endocrinol* 2019;15:666-82.
 27. Eisenberg VH, Arbib N, Schiff E, Goldenberg M, Seidman DS, Soriano D. Sonographic signs of adenomyosis are prevalent in women undergoing surgery for endometriosis and may suggest a higher risk of infertility. *Biomed Res Int* 2017;2017:8967803.
 28. Naftalin J, Hoo W, Pateman K, Mavrelou D, Holland T, Jurkovic D. How common is adenomyosis? A prospective study of prevalence using transvaginal ultrasound in a gynaecology clinic. *Hum Reprod* 2012;27:3432-9.
 29. Kishi Y, Suginami H, Kuramori R, Yabuta M, Suginami R, Taniguchi F. Four subtypes of adenomyosis assessed by magnetic resonance imaging and their specification. *Am J Obstet Gynecol* 2012;207:114.e111-7.
 30. Chapron C, Tosti C, Marcellin L, Bourdon M, Lafay-Pillet MC, Millischer AE, *et al.* Relationship between the magnetic resonance imaging appearance of adenomyosis and endometriosis phenotypes. *Hum Reprod* 2017;32:1393-401.
 31. Zhao L, Zhou S, Zou L, Zhao X. The expression and functionality of stromal caveolin 1 in human adenomyosis. *Hum Reprod* 2013;28:1324-38.
 32. Antona A, Leo G, Favero F, Varalda M, Venetucci J, Faletti S, *et al.* Targeting lysine-specific demethylase 1 (KDM1A/LSD1) impairs colorectal cancer tumorigenesis by affecting cancer cells stemness, motility, and differentiation. *Cell Death Discov* 2023;9:201.
 33. Hou X, Li Q, Yang L, Yang Z, He J, Li Q, *et al.* KDM1A and KDM3A promote tumor growth by upregulating cell cycle-associated genes in pancreatic cancer. *Exp Biol Med (Maywood)* 2021;246:1869-83.
 34. Xu S, Wang X, Yang Y, Li Y, Wu S. LSD1 silencing contributes to enhanced efficacy of anti-CD47/PD-L1 immunotherapy in cervical cancer. *Cell Death Dis* 2021;12:282.
 35. Zhang M, Wang N, Guo XS, Wang LL, Wang PF, Cao ZP, *et al.* Candidate biomarkers in brown adipose tissue for post-mortem diagnosis of fatal hypothermia. *Int J Legal Med* 2024;138:61-72.
 36. Su Y, Liu X, Lian J, Deng C. Epigenetic histone modulations of PPAR γ and related pathways contribute to olanzapine-induced metabolic disorders. *Pharmacol Res* 2020;155:104703.
 37. Wang D, Liu CD, Li HF, Tian ML, Pan JQ, Shu G, *et al.* LSD1 mediates microbial metabolite butyrate-induced thermogenesis in brown and white adipose tissue. *Metabolism* 2020;102:154011.
 38. Venkata PP, Jayamohan S, He Y, Alejo S, Johnson JD, Palacios BE, *et al.* Pharmacological inhibition of KDM1A/LSD1 enhances estrogen receptor beta-mediated tumor suppression in ovarian cancer. *Cancer Lett* 2023;575:216383.

How to cite this article: Cui L, Sang C, Li R, Zhao S. Inhibition of lysine-specific histone demethylase 1A suppresses adenomyosis through reduction in ectopic endometrial stromal cell proliferation, migration, and invasion. *CytoJournal*. 2024;21;50. doi: 10.25259/Cytojournal_48_2024

HTML of this article is available FREE at:
https://dx.doi.org/10.25259/Cytojournal_48_2024

The FIRST **Open Access** cytopathology journal

Publish in *CytoJournal* and **RETAIN** your *copyright* for your intellectual property

Become Cytopathology Foundation (CF) Member at nominal annual membership cost

For details visit <https://cytojournal.com/cf-member>

PubMed indexed

FREE world wide open access

Online processing with rapid turnaround time.

Real time dissemination of time-sensitive technology.

Publishes as many **colored high-resolution images**

Read it, cite it, bookmark it, use RSS feed, & many---



CYTOJOURNAL

www.cytojournal.com

Peer-reviewed academic cytopathology journal

