



Editor-in-Chief:

Miaoqing Zhao, PhD., MD (Shandong First Medical University, Jinan, China

Co-editor-in-Chief:

Lester J. Layfield, MD, (University of Missouri, Columbia, MO, USA)

Founding Editor & Editor-in-chief Emeritus:

Vinod B. Shidham, MD, FIAC, FRCPath (WSU School of Medicine, Detroit, USA)



Research Article

Cytomorphological findings in confirmed cases of tubercular lymphadenitis

Sana Ahuja, MD¹, Rakesh Behera, MBBS¹, Aarti Kumari, MD¹, Sufian Zaheer, MD¹

¹Department of Pathology, Vardhman Mahavir Medical College and Safdarjung Hospital, New Delhi, India.



*Corresponding author:

Sufian Zaheer,

Department of Pathology,
Vardhman Mahavir Medical
College and Safdarjung
Hospital, New Delhi, India.

sufianzaheer@gmail.com

Received: 06 November 2023

Accepted: 30 November 2023

Published: 25 April 2024

DOI

10.25259/Cytojournal_98_2023

Quick Response Code:



ABSTRACT

Objective: Tuberculosis (TB) remains a major health problem, especially in the developing countries. Fine-needle aspiration cytology is the first line of investigation for tubercular lymphadenitis as it is easy to perform, less invasive, quick, and economical. The typical cytopathological features of tuberculosis TB include epithelioid cell granulomas with Langhans giant cells and caseous necrosis. The present study aimed to evaluate the cytomorphological features of newly diagnosed cases of tubercular lymphadenitis confirmed by GeneXpert.

Material and Methods: This was a retrospective study in which all fine-needle aspirates from newly diagnosed cases of tubercular lymphadenitis confirmed by GeneXpert over a 1-year period from July 2022 to July 2023 were included in the study. The May-Grunwald-Giemsa stained smears from these aspirates were categorized into three patterns-epithelioid cell granulomas with necrosis, epithelioid granulomas without necrosis, and necrosis only. The granulomas were further categorized into well-formed, ill--formed, and splintered. The background of the aspirate which included a reactive lymphoid background, lymphocytes, eosinophils, and neutrophils was tabulated for all the cases.

Results: Out of the three cytomorphological patterns, epithelioid granulomas with necrosis were the most predominant (67.5%), followed by necrosis only (20.8%) and granulomas without necrosis (11.6%). An acid-fast bacilli (AFB) positivity of 53.3% (64 cases) was seen on the Ziehl-Neelsen stain. Well-composed, poorly formed, and splintered granulomas were seen in 55 (57.9%), 42 (44.2%), and 21 (22.1%) cases, respectively. Neutrophils were the most common background population (42, 35%) followed by lymphocytes (36, 30%). Reactive lymphoid cells and eosinophils were seen in 12 (10%) and 3 (2.5%) cases, respectively.

Conclusion: Fine-needle aspiration cytology is a rapid inexpensive minimally invasive test for tubercular lymphadenitis as epithelioid cell granulomas along with caseous necrosis are highly suggestive of TB. However, manual acid-fast AFB detection has a low sensitivity as is illustrated in the present study where only AFB was demonstrated in only 53.3% of cases.

Keywords: Tubercular, Lymphadenitis, Fine-needle aspiration cytology, Epithelioid granulomas, Necrosis

INTRODUCTION

Tuberculosis (TB) remains a major health problem, especially in developing countries. A total of 1.6 million deaths due to TB were reported worldwide in 2021 and it was the second leading infectious killer after COVID-19. The WHO South-East Asia (SEA) Region is home to 26% of the world's population with a 43% burden of TB. Six out of the global high TB burden countries are in the SEA Region: Bangladesh, the Democratic People's Republic of Korea, India, Indonesia,

Myanmar, and Thailand. Among extrapulmonary TB, tubercular lymphadenitis is the most prevalent.^[1]

Fine-needle aspiration cytology is the first line of investigation for tubercular lymphadenitis as it is easy to perform, less invasive, quick, and economical. The typical cytopathological features of TB include epithelioid cell granulomas with Langhans giant cells and caseous necrosis. However, acid-fast bacilli (AFB) may not be always demonstrated on Ziehl-Neelsen stain on aspirate material. Furthermore, it is a time-consuming procedure with low sensitivity. More sensitive methods such as Lowenstein-Jensen culture and GeneXpert *Mycobacterium tuberculosis*/rifampicin assay may be required for confirmation where AFB are not demonstrated.^[2]

GeneXpert is a sophisticated molecular diagnostic platform developed by Cepheid, a leading player in the field of molecular diagnostics. Utilizing real-time polymerase chain reaction (PCR) technology, GeneXpert enables rapid and precise detection of a diverse range of infectious diseases and genetic disorders. One of the distinctive features of GeneXpert is its automated and on-demand testing capability, delivering results swiftly without compromising accuracy. GeneXpert has garnered significant recognition for its pivotal role in the diagnosis of TB. The platform offers a rapid and reliable method for detecting *M. tuberculosis*, the causative agent of TB. This proves particularly invaluable in regions with a high prevalence of TB, where timely and accurate diagnosis is paramount for effective disease management. Beyond TB, GeneXpert has demonstrated its versatility in diagnosing other infectious diseases, including HIV, hepatitis, and respiratory infections. Its capacity to deliver quick and precise results has positioned it as an indispensable tool in the realm of molecular diagnostics, contributing to more efficient and targeted healthcare interventions.^[2]

The present study aimed to evaluate the cytomorphological features of newly diagnosed cases of tubercular lymphadenitis confirmed by GeneXpert.

MATERIAL AND METHODS

This was a retrospective study in which all fine-needle aspirates from newly diagnosed cases of tubercular lymphadenitis confirmed by GeneXpert over a 1-year period from July 2022 to July 2023 were included in the study. Any previously diagnosed cases already taking ATT or patients with any history of malignancy (primary or metastatic) were excluded.

The May–Grunwald–Giemsa stained smears from these aspirates were categorized into three patterns:

- (a) Epithelioid cell granulomas with necrosis
- (b) Epithelioid cell granulomas without necrosis
- (c) Necrosis only

The cytomorphological pattern of granulomas was, further, classified into:

- (a) Well-composed epithelioid cell granuloma
- (b) Poorly formed epithelioid cell granuloma
- (c) Splintered epithelioid cell granuloma

Well-composed epithelioid cell granuloma was defined as epithelioid cells along with caseous necrosis, lymphocytes, and giant cells. Poorly formed granuloma was defined as a group of epithelioid cells along with caseous necrosis or lymphocytic infiltrate. Splintered epithelioid cell granulomas consisted of dispersed epithelioid cells with or without lymphocytic infiltration. The background of the aspirate which included a reactive lymphoid background, lymphocytes, eosinophils, and neutrophils was tabulated for all the cases.

RESULTS

A total of 120 lymph node aspirates from confirmed cases of tubercular lymphadenitis by GeneXpert were included in the study. The majority of the lymph node aspirates were from the cervical region (84, 70%), followed by axillary (18, 15%), inguinal (12, 10%), and supraclavicular (6, 5%). The age group of cases ranged from 6 years to 74 years with a male-to-female ratio of 1.2:1. Out of the three cytomorphological patterns, epithelioid granulomas with necrosis were the most predominant (67.5%), followed by necrosis only (20.8%) and granulomas without necrosis (11.6%) [Table 1, Figures 1 and 2].

An AFB positivity of 53.3% (64 cases) was seen on the Ziehl-Neelsen stain. Amongst these, the proportion of cases with AFB detected on the Ziehl-Neelsen stain was highest for necrosis only (60%) followed by the granulomas with necrosis pattern (54.3%) [Figure 3]. The location of AFB was predominantly extracellular (92%). The remaining cases (8%) exhibited AFB located intracellularly within the macrophages. The AFB were seen predominantly scattered singly (90%) except for very occasional cases (10%) where clumps of bacilli were observed.

Well-composed, poorly formed, and splintered granulomas were seen in 55 (57.9%), 42 (44.2%), and 21 (22.1%) cases, respectively. [Table 2] Neutrophils were the most common background population (42, 35%) followed by lymphocytes (36, 30%). Reactive lymphoid cells and eosinophils were seen in 12 (10%) and 3 (2.5%) cases, respectively [Table 3].

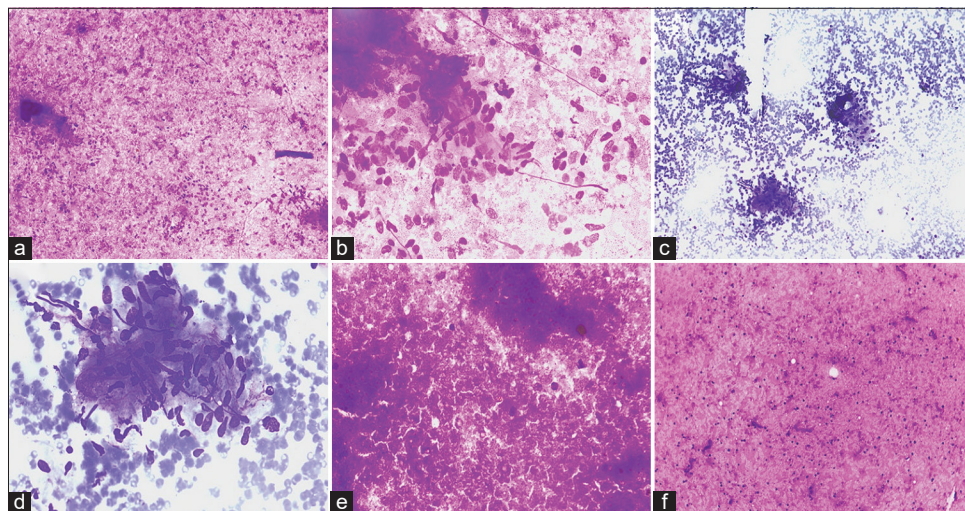


Figure 1: Cytomorphological patterns in tubercular lymphadenitis. (a and b) May–Grunwald–Giemsa stained smears exhibiting epithelioid cell granulomas against a background of caseous necrosis ([a] x40, [b] x100). (c and d) May–Grunwald–Giemsa stained smears exhibiting well-formed epithelioid cell granulomas against a hemorrhagic background ([c] x40, [d] x100). (e) May–Grunwald–Giemsa stained smears exhibiting caseous necrosis (x40). (f) May–Grunwald–Giemsa stained smears exhibiting caseous necrosis with interspersed lymphocytes (x40).

Table 1: Categorization into different cytomorphological patterns along with AFB positivity.

S. No.	Cytomorphological pattern	Total cases <i>n</i> (%)	Positive for AFB (Ziehl Neelsen stain) <i>n</i> (%)	Negative for AFB (Ziehl Neelsen stain) <i>n</i> (%)
1.	Granulomas with necrosis	81 (67.5)	44 (54.3)	37 (45.7)
2.	Granulomas without necrosis	14 (11.6)	5 (35.7)	9 (64.3)
3.	Necrosis only	25 (20.8)	15 (60)	10 (40)

AFB: Acid-fast bacilli

Table 2: Categorization of the different types of granulomas.

S. No.	Type of granuloma (<i>n</i> =95)	Absent <i>n</i> (%)	Present <i>n</i> (%)
1.	Well-composed epithelioid cell granuloma	40 (42.1)	55 (57.9)
2.	Poorly formed epithelioid cell granuloma	53 (55.8)	42 (44.2)
3.	Splintered granuloma	74 (77.9)	21 (22.1)

Table 3: Categorization of the background population.

S. No.	Background (<i>n</i> =120)	Absent <i>n</i> (%)	Present <i>n</i> (%)
1.	Reactive lymphoid cells	108 (90)	12 (10)
2.	Lymphocytes	84 (70)	36 (30)
3.	Neutrophils	78 (65)	42 (35)
4.	Eosinophils	117 (97.5)	3 (2.5)

DISCUSSION

The study illustrated that cases of tubercular lymphadenitis exhibit various patterns on cytopathological examination—granulomas with necrosis, granulomas without necrosis, and necrosis only. The most common pattern observed in the present study included epithelioid cell granulomas with caseous necrosis followed by necrosis only. This was concordant with the findings of most of the previous studies.^[2-14] However, few authors found necrosis to be the most prevalent pattern.^[15-18] The majority of the lymph node aspirates were from the cervical region (84, 70%), followed by axillary (18, 15%), inguinal (12, 10%), and supraclavicular (6, 5%). These findings were similar to those of previous studies.^[2,4,6,10,11]

[Table 4] summarizes the different cytomorphological patterns in previously done studies. This difference could be attributed to the varying immune status of the cases.

An AFB positivity of 53.3% (64 cases) was seen on the Ziehl-Neelsen stain which was highest for necrosis only (60%)

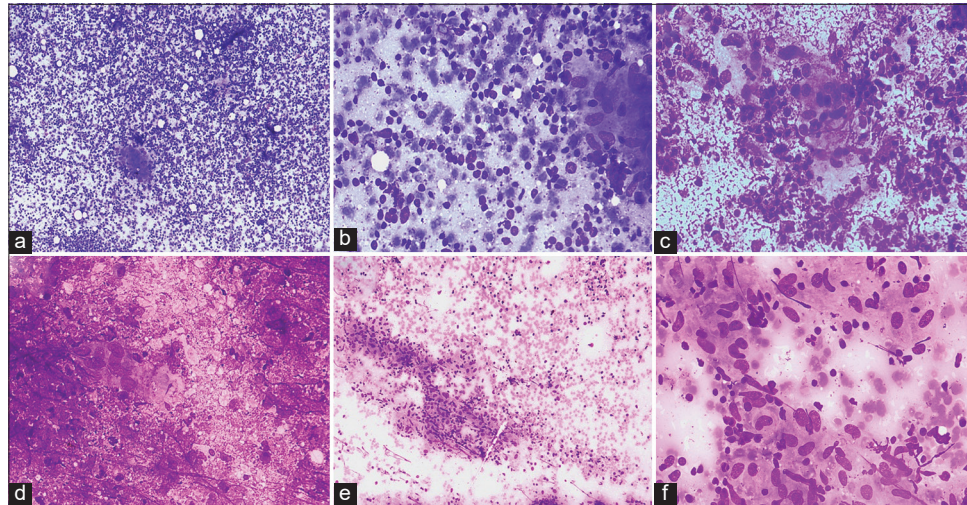


Figure 2: Cytomorphological findings of type of granuloma with the background population. (a and b) May–Grunwald–Giemsa stained smears exhibiting well-formed epithelioid cell granulomas against a background of reactive lymphoid cells ([a] x40, [b] x100). (c and d) May–Grunwald–Giemsa stained smears exhibiting ill-formed epithelioid cell granulomas against a background of necrosis and neutrophils ([c] x40, [d] x100). (e and f) May–Grunwald–Giemsa stained smears exhibiting well-formed epithelioid cell granulomas against a background of scattered lymphocytes ([e] x40, [f] x100).

Table 4: Percentage of each of the cytomorphological patterns in tubercular lymphadenitis reported by previous studies.

Author	Number of cases	Granuloma with necrosis (%)	Granuloma without necrosis (%)	Necrosis only (%)
Helle <i>et al.</i> ^[2] (2023)	158	59	6	21
Shetty and Vyas ^[3] (2022)	100	59	22	14
Pooja <i>et al.</i> ^[4] (2020)	461	74.4	9.2	16.4
Rammeh <i>et al.</i> ^[5] (2018)	171	83.04	8.77	7.01
Hasija <i>et al.</i> ^[6] (2018)	271	45.75	39.11	15.12
Bhatta <i>et al.</i> ^[7] (2018)	126	53.17	38.09	8.73
Umar <i>et al.</i> ^[17] (2018)	612	30.4	16.7	78.3
Mitra <i>et al.</i> ^[14] (2017)	180	41	29	30
Gupta and Bhake ^[13] (2017)	69	49	26	25
Venkatraman ^[12] (2017)	132	55	17	28
Dasgupta <i>et al.</i> ^[18] (2017)	257	25	24	51
Masilamani <i>et al.</i> ^[9] (2015)	212	48	19	33
Hemalatha <i>et al.</i> ^[10] (2014)	150	56	19	23
Chand <i>et al.</i> ^[16] (2014)	550	22	28	50
Thakur <i>et al.</i> ^[11] (2013)	90	57.8	11.1	31.1
Mittal <i>et al.</i> ^[8] (2010)	36	47	17	36
Nayak <i>et al.</i> ^[15] (2004)	42	33	17	50

followed by the granulomas with necrosis pattern (54.3%). The AFB were predominantly found extracellularly in the areas of necrosis. This is concordant to the study by Helle *et al.*^[2,4,6,7,10,16,17] Cell-mediated immunity is responsible for mounting

immune response against the tubercle bacteria in the form of a granulomatous reaction. Thus, cases with epithelioid granulomas without necrosis exhibit the least acid-fast bacilli AFB positivity. The cases with necrosis only exhibit the highest AFB positivity

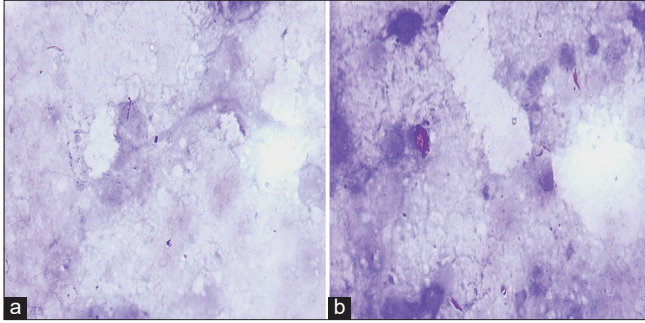


Figure 3: Acid-fast bacilli on Ziehl-Neelsen stain. (a and b) Acid-fast beaded slender rods lying singly, (a, x1000) as well as in clumps, and (b, x1000) in an extracellular location (x1000).

due to a lower cell-mediated immunity due to which they are unable to mount a granulomatous reaction.^[7]

SUMMARY

Fine-needle aspiration cytology is a rapid inexpensive minimally invasive test for tubercular lymphadenitis as epithelioid cell granulomas along with caseous necrosis are highly suggestive of TB. However, manual AFB detection has a low sensitivity as is illustrated in the present study where only AFB was demonstrated in only 53.3% of cases. GeneXpert in addition to diagnosing TB can also test for Rifampicin resistance. Among confirmed cases of TB by GeneXpert, epithelioid cell granulomas with caseous necrosis followed by necrosis only are the most frequently observed cytomorphological patterns.

AVAILABILITY OF DATA AND MATERIALS

The datasets used and/or analyzed during the current study are available from the corresponding author on reasonable request.

ABBREVIATIONS

AFB: Acid fast bacilli
 ATT: anti-tubercular therapy
 FNAC: fine needle aspiration cytology
 PCR: polymerase chain reaction
 SEA: South East Asia
 TB: tuberculosis.

AUTHOR CONTRIBUTIONS

SA: Data curation, formal analysis, writing- original draft ;
 RB: Data curation, formal analysis; AK: Data curation, formal analysis; SZ: Conceptualization, methodology, validation, writing- review and editing, supervision, resources. All authors contributed to editorial changes in the manuscript. All authors have participated sufficiently in the work and

agreed to be accountable for all aspects of the work. All authors read and approved the final manuscript.

ETHICAL APPROVAL AND CONSENT TO PARTICIPATE

This study was approved by the Ethics Committee of Vardhman Mahavir Medical College and Safdarjung Hospital, New Delhi (approval no. IEC/VMMC/SJH/Thesis/2020-11/CC-236).

Written informed consent was obtained from all the participants prior to the publication of this study.

FUNDING

Not applicable.

CONFLICT OF INTEREST

The authors declare no conflict of interest and amongst authors, the authors affiliated in Vardhman Mahavir Medical College and Safdarjung Hospital claims no conflict of interest.

EDITORIAL/PEER REVIEW STATEMENT

To ensure the integrity and highest quality of CytoJournal publications, the review process of this manuscript was conducted under a double-blind model (authors are blinded for reviewers and vice versa) through an automatic online system.

REFERENCES

1. World Health Organization. Global tuberculosis report 2021. Geneva: World Health Organization; 2021. p. 15. Available from: <https://www.who.int/publications/i/item/9789240037021> [Last accessed on 2023 Oct 24].
2. Helle OM, Kanthali M, Akhtar N, Purohit MR, Mustafa T. Significance of non-granulomatous cytomorphology on fine needle aspirate in lymphadenitis cases classified as tuberculous by using a composite reference standard. *Diagn Cytopathol* 2023;51:575-83.
3. Shetty D, Vyas D. Combination method for the diagnosis of tuberculous lymphadenitis in high burden settings. *Surg Exp Pathol* 2022;5:11.
4. Pooja DK, Shilpa HG, Gauravi AD. Cytomorphological patterns of tuberculous inflammation and its comparison with positivity for tubercle bacilli by fluorescent staining. *Int J Clin Diagn Pathol* 2020;3:475-9.
5. Rammeh S, Romdhane E, Toumi AA, Houcine Y, Lahiani R, Sassi A, *et al.* Efficacy of fine-needle aspiration cytology in the diagnosis of tuberculous cervical lymphadenitis. *Acta Cytol* 2018;62:99-103.
6. Hasija S, Garg S, Singh P, Kalhan S, Saini N, Khan A. Cytomorphological spectrum of extra pulmonary tuberculosis in rural tertiary care hospital: A study. *Int J Biomed Adv Res* 2018;9:59-63.
7. Bhatta S, Singh S, Chalise SR. Cytopathological patterns of tuberculous lymphadenitis: An analysis of 126 cases in a tertiary care hospital. *Int J Res Med Sci* 2018;6:1898-901.

8. Mittal P, Handa U, Mohan H, Gupta V. Comparative evaluation of fine needle aspiration cytology, culture, and PCR in diagnosis of tuberculous lymphadenitis. *Diagn Cytopathol* 2011;39:822-6.
9. Masilamani S, Arul P, Akshatha C. Correlation of cytomorphological patterns and acid-fast bacilli positivity in tuberculous lymphadenitis in a rural population of southern India. *J Nat Sci Biol Med* 2015;6:134-8.
10. Hemalatha A, Shruti P, Kumar MU, Bhaskaran A. Cytomorphological patterns of tubercular lymphadenitis revisited. *Ann Med Health Sci Res* 2014;4:393-6.
11. Thakur B, Mehrotra R, Nigam JS. Correlation of various techniques in diagnosis of tuberculous lymphadenitis on fine needle aspiration cytology. *Pathol Res Int* 2013;2013:824620.
12. Venkatraman JBK. Cytomorphological patterns of tuberculous lymphadenitis in correlation with AFB positivity. *Ind J Pathol Res Pract* 2017;6:250-4.
13. Gupta V, Bhake A. Clinical and cytological features in diagnosis of peripheral tubercular lymphadenitis - a hospital-based study from Central India. *Indian J Tuberc* 2017;64:309-13.
14. Mitra SK, Misra RK, Rai P. Cytomorphological patterns of tubercular lymphadenitis and its comparison with Ziehl-Neelsen staining and culture in eastern up. (Gorakhpur region): Cytological study of 400 cases. *J Cytol* 2017;34:139-43.
15. Nayak S, Puranik SC, Deshmukh SD, Mani R, Bhole AV, Bollinger RC. Fine-needle aspiration cytology in tuberculous lymphadenitis of patients with and without HIV infection. *Diagn Cytopathol* 2004;31:204-6.
16. Chand P, Dogra R, Chauhan N, Gupta R, Khare P. Cytopathological pattern of tubercular lymphadenopathy on FNAC: Analysis of 550 consecutive cases. *J Clin Diagn Res* 2014;8:16-9.
17. Umar S, Ahmad SS, Akhtar K. Different cytomorphological patterns in tuberculosis in a tertiary health care centre: 5 year study. *IOSR J Dent Med Sci (IOSR-JDMS)* 2018;17:53-7.
18. Dasgupta S, Chakrabarti S, Sarkar S. Shifting trend of tubercular lymphadenitis over a decade - a study from eastern region of India. *Biomed J* 2017;40:284-9.

How to cite this article: Ahuja S, Behera R, Kumari A, Zaheer S. Cytomorphological findings in confirmed cases of tubercular lymphadenitis. *CytoJournal*. 2024;21:14. doi: 10.25259/Cytojournal_98_2023

HTML of this article is available FREE at:
https://dx.doi.org/10.25259/Cytojournal_98_2023

The FIRST **Open Access** cytopathology journal

Publish in *CytoJournal* and **RETAIN** your *copyright* for your intellectual property

Become Cytopathology Foundation (CF) Member at nominal annual membership cost

For details visit <https://cytojournal.com/cf-member>

PubMed indexed

FREE world wide **open access**

Online processing with rapid turnaround time.

Real time dissemination of time-sensitive technology.

Publishes as many **colored high-resolution images**

Read it, cite it, bookmark it, use RSS feed, & many----



CYTOJOURNAL

www.cytojournal.com

Peer -reviewed academic cytopathology journal





NextGen CelBloking™ Kits

**Frustrated with your cell blocks?
We have a better solution!**

Nano

Nano NextGen CelBloking™

Cell block kit to process single scattered cell specimens and tissue fragments of **any** cellularity.



PATENT PENDING



Pack #1



Pack #2

Micro

Micro NextGen CelBloking™

For cellular specimens (more than 1 ml concentrated specimen with Tissuecrit more than 50%)



PATENT PENDING



Pack #1



Pack #2