



Editor-in-Chief:

Miaoqing Zhao, PhD., MD (Shandong First Medical University, Jinan, China

Co-editor-in-Chief:

Lester J. Layfield, MD, (University of Missouri, Columbia, MO, USA)

Founding Editor & Editor-in-chief Emeritus:

Vinod B. Shidham, MD, FIAC, FRCPath (WSU School of Medicine, Detroit, USA)

Research Article

The endometrial cancer detection using non-invasive hypermethylation of *CDO1* and *CELF4* genes in women with postmenopausal bleeding in Northwest China

Bingxin Cai, B.S.Med¹, Jun Du, MD¹, Yishan Wang, MD², Zhijie Liu, MD¹, Yan Wang, MD¹, Liuyu Li, MD¹, Pei Liu, PhD², Linhai Wang, PhD², Qing Liu, B.S.Med¹, Zhaoyan Meng, B.S.Med¹

¹Department of Obstetrics and Gynecology, Gansu Provincial Maternity and Child-care Hospital, Lanzhou, China, ²Department of Medical Laboratory, Beijing Origin-Poly Bio-Tec Co., Ltd., Beijing, China.

*Bingxin Cai, Jun Du and Yishan Wang have equal contributions.



Corresponding authors:

Zhaoyan Meng,
Department of Obstetrics and Gynecology, Gansu Provincial Maternity and Child-care Hospital, Lanzhou, China.
540486046@qq.com

Qing Liu,
Department of Obstetrics and Gynecology, Gansu Provincial Maternity and Child-care Hospital, Lanzhou, China.
230547180536@qq.com

Received: 28 September 2023

Accepted: 28 December 2023

Published: 25 April 2024

DOI

10.25259/Cytojournal_78_2023

Quick Response Code:



ABSTRACT

Objective: The objective of this study was to verify the clinical predictive performance of methylated cysteine dioxygenase type 1 (*CDO1^m*) and CUGBP Elav-like family member 4 (*CELF4^m*) in endometrial cancer (EC) women with postmenopausal bleeding (PMB).

Material and Methods: A single-center, prospective, and case-control study was conducted in the Gansu Provincial Maternity and Child-care Hospital with 138 female postmenopausal patients enrolled in 2022. All patients underwent body mass index (BMI) detection, transvaginal ultrasonography (TVUS) detection, carbohydrate antigen 125 detection, and the cervical exfoliated cell *CDO1/CELF4* gene methylation detection to analyze the sensitivity, specificity, and accuracy of different screening tests statistically with the biopsy and/or dilation and curettage (D&C) pathological diagnosis under hysteroscopy as the gold standard.

Results: There was no significant difference in age between the EC group and the non-EC group, $P = 0.492$. Using quantitative polymerase chain reaction (qPCR) technology, we validated the *CDO1* and *CELF4* methylation detection with 87.5% sensitivity and 95.9% specificity as a useful strategy for the triage of women with PMB for the detection of EC. In addition, 100% of type II EC ($n = 6$) were positively detected by the *CDO1* or *CELF4* methylation test.

Conclusion: The *CDO1* and *CELF4* methylation test with high specificity as an auxiliary diagnostic tool or alternative method provides physicians with a reference to distinguish between benign and malignant tumors in women with postmenopausal bleeding, to justify the necessity of using invasive methods to confirm diagnosis.

Keywords: Endometrial cancer, Methylation, *CDO1*, *CELF4*, Postmenopausal bleeding

INTRODUCTION

Endometrial cancer (EC) stands as the most prevalent gynecologic malignancy of the female genital tract in developed countries. It ranks as the sixth most common cancer in women, with 417,000 new diagnoses globally in 2020, and is anticipated to rise over the next 10 years.^[1,2] The increased incidence of EC is primarily attributed to the rising prevalence of obesity, aging, early menarche, late menopause, diabetes, metabolic syndrome, nulliparity, and other associated risk factors.^[3] The survival rate of EC patients is significantly contingent on the stage at diagnosis, and any delay in diagnosis can exert substantial adverse effects on survival.^[4] As per the International Federation of Gynecology and Obstetrics (FIGO) diagnostic staging, the 5-year survival rate for

This is an open-access article distributed under the terms of the Creative Commons Attribution-Non Commercial-Share Alike 4.0 License, which allows others to remix, transform, and build upon the work non-commercially, as long as the author is credited and the new creations are licensed under the identical terms. © 2024 The Author(s). Published by Scientific Scholar.



Publisher of Scientific Journals

EC patients decreases from 85% in stage I to 25% in stage IV.^[5] Consequently, lower mortality and extended disease-free survival appear to correlate with early diagnosis, underscoring the pivotal role of high-precision detection and screening programs.^[6]

Postmenopausal bleeding (PMB) affects up to 10% of women, constituting about two-thirds of gynecological visits for postmenopausal women and serving as a common clinical symptom of EC.^[7] Given the prevalence of PMB and its association with both EC and benign diseases, it is crucial to accurately quantify the cancer risk in women experiencing PMB.^[8] The PMB symptom is highly sensitive, even in the early stages of EC, and the American College of Obstetricians and Gynecologists recommends that women with PMB should be promptly evaluated.^[9] Women with PMB should undergo standardized clinical testing procedures, including the use of transvaginal ultrasonography (TVUS) to assess endometrial thickness (ET), which is the most frequently used initial investigation. This should be followed by invasive hysteroscopy, endometrial biopsy, and/or dilation and curettage (D&C). It is important to note that the inspection and results may vary widely among different settings.^[9,10]

For the anatomical continuity between the uterine cavity and the cervix, brushing the exfoliated cells of the cervix can also collect abnormal exfoliated endometrial cells to assess signs of endometrial disease. Routine cervical cytology can detect EC in nearly half of the patients, particularly among experienced cytopathologists.^[11] Recent literature indicates that specific deoxyribonucleic acid (DNA) methylation markers in cervical specimens surpass cytological examination in detecting EC.^[12] Two hypermethylated candidate genes, namely, cysteine dioxygenase type 1 (*CDO1*) and CUGBP Elav-like family member 4 (*CELF4*), were identified in patients with EC based on existing literature and data from the cancer genome atlas database.^[13]

The inverse relationship between the incidence of EC, its mortality rate, and the socioeconomic index is particularly concerning. Women in low-income and middle-income countries (LMICs) are significantly more prone to succumb to EC than their counterparts in high-income countries, indicative of inadequate access to timely evidence-based medical care and high-quality early diagnosis of EC.^[14] The gross domestic product of Gansu Province in China is ranked 27th out of the 31 provinces in the country. Due to the geographical location in the northwest and the distinctive characteristics of people's diet and lifestyle, EC is escalating rapidly, especially among postmenopausal women. At present, there exists an urgent need to identify a non-invasive, accurate, and cost-effective EC screening method for outpatients with PMB and validate its clinical feasibility.

This study aims to validate the clinical predictive efficacy of methylated *CDO1* (*CDO1^m*) and methylated *CELF4*

(*CELF4^m*) in women with EC presenting with PMB syndromes in a single hospital in Gansu, China. We assessed the discriminatory potential of *CDO1^m/CELF4^m* in distinguishing between benign and malignant tumors in cases of EC and non-EC. Finally, we compared their methylation performance with the non-invasive capabilities of TVUS, body mass index (BMI), carbohydrate antigen 125 (CA125), and other relevant factors.

MATERIAL AND METHODS

Study design and sample collection

This prospective cross-sectional study employs a non-invasive clinical method to validate the clinical efficacy of detecting *CDO1^m* and *CELF4^m* in a single hospital. The study received approval from the Institutional Review Board (IRB) of the Ethics Committee at Gansu Provincial Maternity and Child-care Hospital, Gansu, China (IRB No.: 2022-GSFY-49). PMB patients were enrolled and provided informed consent according to the Standards for Reporting of Diagnostic Accuracy in clinics.^[15] The inclusion criteria were as follows: Postmenopausal women experiencing symptoms of vaginal bleeding. Exclusion criteria encompassed women with a prior diagnosis of cancer in any organ, those who had undergone hysterectomy, individuals who did not complete all the required examinations, those receiving hormonal therapy for menopausal symptoms within the past year, and those undergoing immunosuppressive therapy within the year preceding enrollment.

The cervical brush was inserted into the cervix and swirled clockwise 5–6 times to collect exfoliated cells, which would be preserved in the PreservCyt solution (Hologic, Bedford, MA, USA) in the gynecology clinic. Patients' information, including TVUS, hysteroscopy, endometrial biopsy, and/or D&C, was collected. The results were confirmed through biopsy or surgical histopathology.

CDO1 and *CELF4* hyper-methylation detection

Methylation detection was conducted in a certified DNA laboratory, with operators and staff members blinded to the clinical information. *CDO1* and *CELF4* methylation detection (CISENDO® test) utilized the same specimens collected in the PreservCyt solution.

Genomic DNA (gDNA) was extracted from the exfoliated cervical sample using the JH-DNA Isolation and Purifying kit (OriginPoly Bio-Tec Co., Ltd., Beijing, China) per the manufacturer's instructions. The DNA concentration was quantified using the NanoDrop 2000c spectrophotometer (Thermo Fisher Scientific, DE, USA). Briefly, 500 ng of gDNA were subjected to bisulfite conversion using JH-DNA Methylation-Lightning MagPrep (OriginPoly Bio-

Tec Co., Ltd., Beijing, China). Subsequently, the levels of *CDO1^m* and *CELF4^m* were determined using the CISENDO® DNA Methylation Detection Kit for EC (Real-time polymerase chain reaction) with glyceraldehyde-3-phosphate dehydrogenase (*GAPDH*) as an internal control (OriginPoly Bio-Tec Co., Ltd., Beijing, China) by the ABI 7500 real-time PCR System platform (Life Technology, Foster City, CA, USA). The hypermethylation level of the *CDO1/CELF4* gene was determined by the difference between the two ΔC_p values ($\Delta C_p C1 = C_p CDO1 - C_p GAPDH$ and $\Delta C_p C4 = C_p CELF4 - C_p GAPDH$). A positive result of the CISENDO® methylation test is defined as either $\Delta C_p C1 \leq 8.4$ or $\Delta C_p C4 \leq 8.8$.

Demographic characteristics and clinical assessment

Demographic characteristics and clinical evaluation data on age, race, weight, height, waist circumference, heart rate, blood pressure, current or past occupation, drug treatment, abnormal uterine bleeding, and history of gynecological diseases were collected for each participant woman. For EC patients, the EC tissue type, FIGO grade and stage, and tumor history were also recorded. BMI was calculated as weight in kilograms divided by height in meters squared. The level of CA125 in serum was detected using the CA125 ELISA kit (Coibo Bio Co. Shanghai, China) according to the manufacturer's instructions. ET was measured by TVUS.

Statistical analysis

The participants were characterized using descriptive statistics. The ΔC_p values of *CDO1^m* and *CELF4^m* were compared using the Mann-Whitney U-test. Differences in proportions between independent groups were compared using the Wald (continuity corrected) test. Receiver operating characteristic (ROC) curves were used to evaluate the areas under the curve (AUCs) of BMI, ET, CA125, *CDO1^m*, and *CELF4^m*. Sensitivity, specificity, positive predictive value (PPV), and negative predictive value (NPV) for detecting EC and their confidence intervals were calculated. The Statistical Package for the Social Sciences 27.0 (IBM Corp., Armonk, NY, USA) and R (version 4.1.2, Vienna, Austria) were used to do the statistics. The methylation cutoff value for the final clinical statistical analysis was based on the CISENDO® test defined as either $\Delta C_p C1 \leq 8.4$ or $\Delta C_p C4 \leq 8.8$. All differences were considered two-sided and statistically significant at $P < 0.05$.

RESULTS

Participant characteristics

The enrollment flow charts and participant characteristics are reported in Figure 1 and Table 1, respectively. A total of 138 women (median [range] 58.0 [54.0–66.0] years) were enrolled and analyzed in the study: 40 (29.0%) with EC (58.0 [55.9–

66.4] years) and 98 (71.0%) with no EC (58.0 [53.0–66.0] years). No significant age difference was observed between the EC and non-EC groups ($P = 0.492$) in Table 2. Among the 40 women with EC, 32 (80%) had stage I disease, 1 (2.5%) had stage II, 6 (15%) had stage III disease, and 1 (2.5%) had stage IV, according to the FIGO classification. Regarding tumor grading, 18 (45.0%) were G1, 12 (30.0%) were G2, and 10 (25.0%) were G3. There were 34 (85.0%) type I and 6 (15.0%) type II EC. Of the six patients with type II EC, two had clear cell carcinoma, two had serous carcinoma, and two had mixed carcinoma (endometrioid carcinoma and sarcoma, and serous tumor and sarcoma).

Figure 2 showed that the AUCs from high to low were 0.932 (0.878–0.985) for *CDO1^m*, 0.863 (0.789–0.938) for *CELF4^m*, 0.704 (0.610–0.797) for CA125, 0.672 (0.553–0.792) for ET, and 0.656 (0.559–0.752) for BMI, respectively.

Characteristics of endometrial carcinoma and non-endometrial carcinoma

Compared with the non-EC group, women with EC had higher detection values in BMI, ET, and CA125, but had lower values in *CDO1^m* and *CELF4^m* [Table 2 and Figure 3]. The BMI values in non-EC and EC were 24.1 (22.0–26.4) and 25.8 (23.2–28.0), respectively. The ET values in non-EC and EC were 5.0 (3.0–9.0) and 10.0 (3.5–19.0), respectively. The CA125 values in non-EC and EC were 12.42 (8.30–19.80) and 18.90 (13.25–36.35), respectively.

In contrast, only the positive numbers of ET in EC patients and non-EC patients were not significantly different, based on the definition of clinical routine use in Table 3. The positive frequency of *CDO1^m* and *CELF4^m* was 77.5% (63.9–89.7) and 62.5% (46.9–77.3) in the EC group; 1.0% (0.0–3.3) and 3.1% (0.0–6.8) in the non-EC group, $P < 0.001$, respectively. Among these tests, the top three largest differences between the EC group and non-EC group were 76.5 (61.6–91.3) for *CDO1^m*, 59.4 (42.3–76.6) for *CELF4^m*, and 26.2 (6.8–45.6) for BMI, which are higher than ET (recommended in the guideline).

The positive number and percentage of BMI and ET of this study cohort decreased compared to this study cohort, while CA125, *CDO1^m*, and *CELF4^m* in this study increased [Table 3]. These results indicate that the positive cutoff values in the cohort for BMI and ET are higher than those recommended in the guidelines. The positive cutoff values of CA125, *CDO1^m*, and *CELF4^m* are lower than the recommended values in the CISENDO® DNA Methylation Detection Kit [Table 3].

Clinical performance of different testing for EC detection

Table 4 reports the diagnostic performance for each test when applied to the study. In the single test, *CDO1^m* had the best

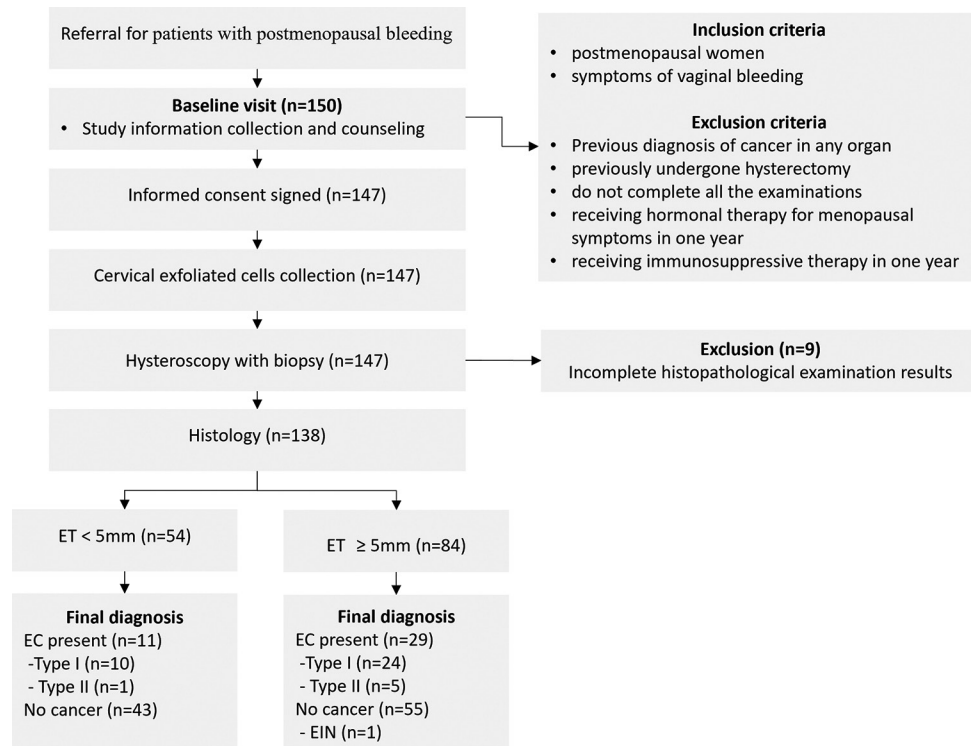


Figure 1: Diagram showing the flow of participants according to Standards for Reporting Diagnostic accuracy studies (STARD). (ET: Endometrial thickness, EC: Endometrial cancer, n: number, EIN: Endometrial intraepithelial neoplasia).

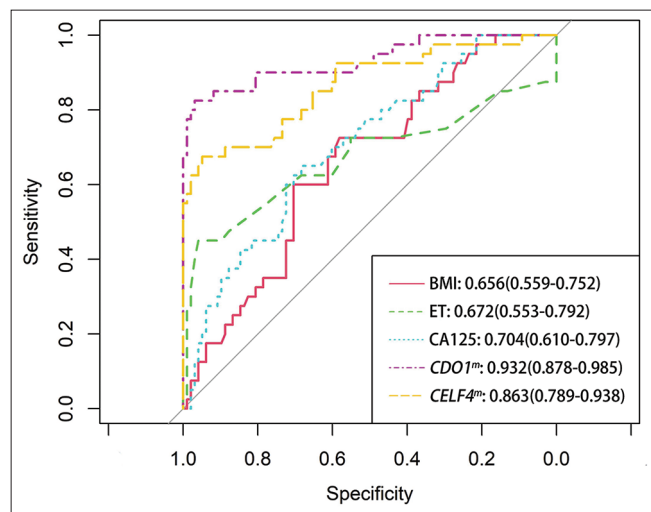


Figure 2: Receiver operating characteristic (ROC) curve analysis of different tests for EC. (EC: Endometrial cancer, BMI: Body mass index, ET: Endometrial thickness, CA125: Carbohydrate antigen 125, *CDO1^m*: Methylated cysteine dioxygenase type 1, and *CELF4^m*: Methylated CUGBP Elav-like family member 4. The area under the ROC curve of each test was calculated for the diagnosis of EC).

sensitivity (77.5 [61.5–89.2]) and the best specificity of (99.0 [94.4–100.0]). In the combined testing, *CDO1^m* or ET had the highest sensitivity of 95.0 (83.1–99.4), but the specificity is only

43.9 (33.9–54.2). The *CDO1^m* or *CELF4^m* combined test, without a missed diagnosis of type II EC, has the highest specificity of 95.9 (89.9–98.9) and a reasonable sensitivity of 87.5 (73.2–95.8), with 10% sensitivity higher than *CDO1^m* single testing. The highest PPV of positive *CDO1^m* was 96.9 (81.4–99.5), while the best NPV of *CDO1^m*/*CELF4^m*/ET was 97.6 (85.4–99.7), respectively.

DISCUSSION

The histological examination of endometrial specimens by invasive hysteroscopy or D&C remains the gold standard in the diagnosis of EC. Such a diagnosis is limited by sampling invasiveness, sampling error, repeated sampling, the experience of pathologists, and poor reproducibility of the histological examination. 20–36% of the negative results in D&C were due to sampling failure, especially in the corners of the endometrial cavity.^[16] Thus, many patients undergo repeated invasive evaluation through endometrial sampling or D&C with an accuracy of about 60%, causing inconvenience, pain, stress, injury, and high cost. This makes it more challenging to implement EC diagnosis in economically underdeveloped areas.^[17] Although there have been great efforts in non-invasive EC screening research, no reasonable methods or biomarkers have been validated to date, let alone in economically underdeveloped areas. Furthermore, some women consider

this invasive diagnosis procedure embarrassing, which is another factor contributing to a late-stage diagnosis of EC.^[18] The high survival rate of EC in the early stage highlights the importance of developing non-invasive detection and even

self-sampling in the future.^[19] It is crucial to develop and validate the non-invasive EC diagnosis with high-precision testing in outpatient or health centers in developing regions.

This study demonstrates that the *CDO1* or *CELF4* methylation test (CISENDO® test), which detects the DNA methylation status from cervical scraping cells, can be useful biomarkers for the triage of women with PMB. It quantitatively detects the hypermethylation levels of *CDO1* or *CELF4* genes in the cervical scraping samples of women with PMB syndrome. Using quantitative polymerase chain reaction technology, the *CDO1* or *CELF4* combination test can reach 87.5% sensitivity and 95.9% specificity as triage biomarkers to predict EC for women with PMB in hospital outpatient settings. In addition, 100% of type II EC cases ($n = 6$) were positively detected by the *CDO1* or *CELF4* methylation test.

According to a large-scale systematic review of 44 studies (including 1341 cases and 15998 controls), the cutoff value of 5 mm ET evaluated by TVUS for triage of suspected EC has 96.2% sensitivity, but the specificity is low (about 51.5%).^[20,21] Thus, the high sensitivity would ensure that most cases of EC are captured, but the low specificity of TVUS may lead to many unnecessary invasive hysteroscopy follow-up procedures. In this study, the sensitivity of ET was 72.5%, which is 23.7% lower than that reported in the systematic review. We also found that 27.5% ($n = 11/40$) of EC patients had ET <5 mm, and 39.9% ($n = 55/138$) of non-EC patients had ET >5 mm, resulting in many false positives and false negatives, respectively. Therefore, TVUS may lead to too many invasive biopsy referrals and missed diagnoses. In conclusion, the *CDO1* and *CELF4* methylation tests outperformed TVUS in all clinical performance aspects for detecting EC [Table 4]. These results indicate that the testing of ET may still be limited by the experience of medical staff and instruments in the LMICs.

In addition to ET, many studies reported on the use of serum CA125 and cervical exfoliated cytology for non-invasive detection of EC. In this study, the lower sensitivity (27.5%) of CA125 in detecting EC is similar to that reported in previous literature, because CA125 is easily confused with benign diseases

Table 1: The baseline characteristics.

Characteristic	Frequency	Percent
Age, median (IQR)	58.0 (54.0–66.0)	
BMI (kg/m ²), median (IQR)	24.5 (22.7–26.8)	
Endometrial thickness (mm), median (IQR)	6.0 (3.0–10.0)	
CA125 (u/mL), median (IQR)	14.14 (9.00–23.50)	
<i>CDO1</i> ^m , median (IQR)	15.94 (9.03–17.92)	
<i>CELF4</i> ^m , median (IQR)	13.50 (9.61–17.27)	
Pathology		
Non-endometrial cancer	98	71.0
Endometrial cancer	40	29.0
IA	24	60.0
IB	8	20.0
II	1	2.5
III	6	15.0
IV	1	2.5
Tumor grading		
G1	18	45.0
G2	12	30.0
G3	10	25.0
Subtype		
Type I	34	85.0
Type II	6	15.0

IQR: Interquartile range, G: Tumor grading, BMI: Body mass index, CA125: Carbohydrate antigen 125, *CDO1*^m: Methylated cysteine dioxygenase type 1, *CELF4*^m: Methylated CUGBP Elav-like family member 4, G1: Grade 1, G2: Grade 2, G3: Grade 3.

Table 2: Detection value characteristics of non-EC and EC.

Characteristic	Non-EC (n=98)	EC (n=40)	P
Age, median (IQR)	58.0 (53.0–66.0)	58.0 (55.9–66.4)	0.492
BMI (kg/m ²), median (IQR)	24.1 (22.0–26.4)	25.8 (23.2–28.0)	0.004
ET (mm), median (IQR)	5.0 (3.0–9.0)	10.0 (3.5–19.0)	0.001
CA125 (u/mL), median (IQR)	12.42 (8.30–19.80)	18.90 (13.25–36.35)	<0.001
<i>CDO1</i> ^m , median (IQR)	17.15 (14.00–18.41)	5.55 (2.65–8.27)	<0.001
<i>CELF4</i> ^m , median (IQR)	16.22 (11.58–17.66)	6.03 (3.39–11.78)	<0.001

Mann-Whitney U-test, IQR: Interquartile range, P: P value, BMI: Body mass index, ET: Endometrial thickness, CA125: Carbohydrate antigen 125, *CDO1*^m: Methylated cysteine dioxygenase type 1, *CELF4*^m: Methylated CUGBP Elav-like family member 4, EC: Endometrial cancer

Table 3: The positive frequency in non-EC and EC.

Characteristic	Non-EC (N=98) n, %±SE	EC (N=40) n, %±SE	Difference (95% CI)	P-value
Definition of clinical routine use ¹				
BMI (≥25 kg/m ²)	38, 38.8±4.9	26, 65.0±7.5	26.2 (6.8–45.6)	0.007
ET (≥5 mm)	55, 56.1±5.0	29, 72.5±7.1	16.4 (–2.4–35.1)	0.091
CA125 (>35 u/mL)	6, 6.1±2.4	11, 27.5±7.1	21.4 (5.0–37.8)	0.009
<i>CDO1</i> ^m (ΔCp C1≤8.4)	1, 1.0±1.0	31, 77.5±6.6	76.5 (61.6–91.3)	<0.001
<i>CELFA</i> ^m (ΔCp C4≤8.8)	3, 3.1±1.7	25, 62.5±7.7	59.4 (42.3–76.6)	<0.001
Definition of this study cohort ²				
BMI (kg/m ²) ≥25.52 kg/m ²	29, 29.6±4.6	24, 60.0±7.7	30.4 (11.0–49.8)	0.001
ET (≥8 mm)	31, 31.6±4.7	25, 62.5±7.7	30.9 (11.5–50.2)	0.001
CA125 (>16 u/mL)	31, 31.6±4.7	26, 65.0±7.5	33.4 (14.2–52.5)	<0.001
<i>CDO1</i> ^m (ΔCp≤10.2)	8, 8.2±2.8	34, 85.0±5.6	76.8 (62.8–90.9)	<0.001
<i>CELFA</i> ^m (ΔCp≤10.47)	11, 11.2±3.2	28, 70.0±7.2	58.8 (41.5–76.1)	<0.001

¹“Definition of clinical routine use” is based on the guidelines, clinical use behavior, and the cutoff value recommended by the kit. The positive result was defined: BMI≥25 kg/m², ET≥5 mm, CA125>35 u/mL, *CDO1*^m, ΔCp C1≤8.4, and *CELFA*^m, ΔCp C4^m≤8.8. ²“Definition of this study cohort” is the best cutoff value determined by the AUC calculation of this clinical study. The positive result was defined: BMI≥25.52 kg/m², ET≥8 mm, CA125>16 u/mL, *CDO1*^m, ΔCp C1≤10.2, and *CELFA*^m, ΔCp C4^m≤10.47. N: Total numbers of the group, n: number, %: Percentage, SE: Standard error, CI: Confidence intervals, EC: Endometrial cancer, BMI: Body mass index, ET: Endometrial thickness, CA125: Carbohydrate antigen 125, *CDO1*^m: Methylated cysteine dioxygenase type 1, *CELFA*^m: Methylated CUGBP Elav-like family member 4,

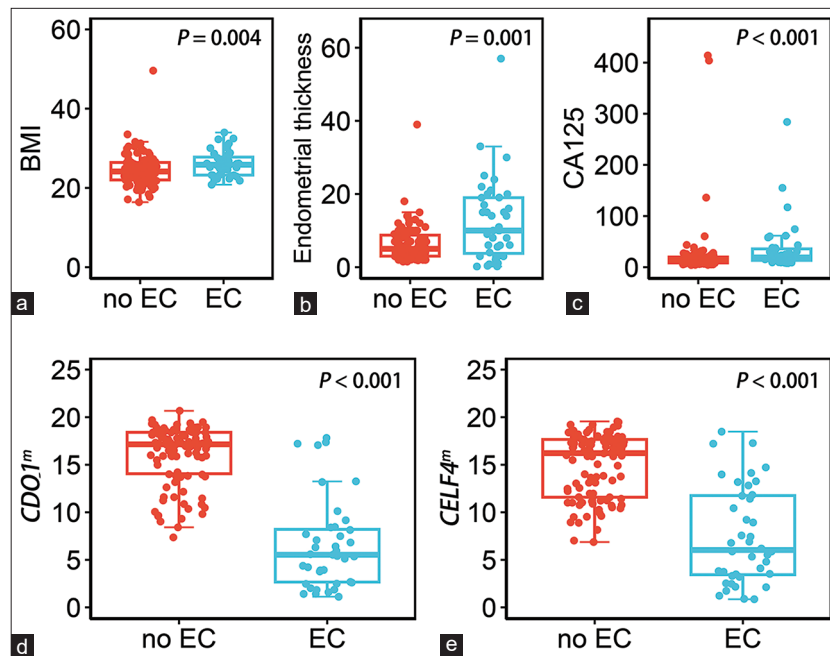


Figure 3: The dot plots show the distribution of the five testing in non-endometrial cancer (EC) and endometrial cancer (EC) groups, the median and interquartile ranges are depicted by boxes. (a) Distribution of the value of BMI, ≥25 kg/m². (b) Distribution of the value of endometrial thickness, ≥5 mm. (c) Distribution of the value of CA125, >35 u/mL. (d) Distribution of the value of methylated *CDO1*, ΔCp ≤ 8.4. (e) Distribution of the value of methylated *CELFA*, ΔCp ≤ 8.8. (EC: Endometrial cancer, BMI: Body mass index, CA125: Carbohydrate antigen 125, *CDO1*^m: Methylated cysteine dioxygenase type 1, and *CELFA*^m: Methylated CUGBP Elav-like family member 4).

Table 4: Diagnostic performance of single test and combined test.

Test	Sensitivity	Specificity	PPV	NPV	AUC
BMI (kg/m ²) ≥ 25 kg/m ²	26/40, 65.0 (48.3-79.4)	60/98, 61.2 (50.8-70.9)	26/64, 40.6 (32.8-48.9)	60/74, 81.1 (73.2-87.1)	0.631 (0.529-0.733)
ET ≥ 5 mm	29/40, 72.5 (56.1-85.4)	43/98, 43.9 (33.9-54.3)	29/84, 34.5 (28.9-40.6)	43/54, 79.6 (69.3-87.1)	0.582 (0.479-0.685)
CA125 > 35 u/ml	11/40, 27.5 (14.6-43.9)	92/98, 93.9 (87.1-97.7)	11/17, 64.7 (42.1-82.2)	92/121, 76.0 (72.2-79.4)	0.607 (0.497-0.717)
<i>CDO1</i> ^m ΔCp ≤ 8.4	31/40, 77.5 (61.5-89.2)	97/98, 99.0 (94.4-100.0)	31/32, 96.9 (81.4-99.5)	97/106, 91.5 (85.8-95.0)	0.882 (0.803-0.962)
<i>CELF4</i> ^m ΔCp ≤ 8.8	25/40, 62.5 (45.8-77.3)	95/98, 96.9 (91.3-99.4)	25/28, 89.3 (72.7-96.3)	95/110, 86.4 (80.9-90.4)	0.797 (0.701-0.894)
<i>CDO1</i> ^m or <i>CELF4</i> ^m	35/40, 87.5 (73.2-95.8)	94/98, 95.9 (89.9-98.9)	35/39, 89.7 (76.9-95.8)	94/99, 94.9 (89.2-97.7)	0.917 (0.853-0.91)
<i>CDO1</i> ^m or Endometrial Thickness	38/40, 95.0 (83.1-99.4)	43/98, 43.9 (33.9-54.2)	38/93, 40.9 (36.4-45.5)	43/45, 95.6 (84.5-98.8)	0.694 (0.606-0.782)
<i>CELF4</i> ^m or Endometrial Thickness	36/40, 90.0 (76.3-97.2)	41/98, 41.8 (31.9-52.2)	36/93, 38.7 (34.1-43.5)	41/45, 91.1 (79.7-96.4)	0.659 (0.566-0.753)
<i>CDO1</i> ^m or <i>CELF4</i> ^m or Endometrial Thickness	39/40, 97.5 (86.8-99.9)	41/98, 41.8 (31.9-52.2)	39/96, 40.6 (36.5-44.9)	41/42, 97.6 (85.4-99.7)	0.697 (0.610-0.783)

PPV, positive predictive value; NPV, negative predictive value; AUC, the area under the Receiver operating characteristic (ROC) curve; BMI, body mass index; ET, endometrial thickness; CA125, carbohydrate antigen 125; *CDO1*^m, methylated cysteine dioxygenase type 1; *CELF4*^m, methylated CUGBP Elav-like family member 4^m, methylated.

(such as adenomyosis, hysteromyoma, and endometriosis).^[22] Therefore, guidelines do not recommend CA-125 for cancer screening. The previous proof-of-concept studies of non-invasive testing showed that EC can be distinguished from benign diseases by brushing exfoliated cervical cells, tampons, or vaginal self-samples for cell morphology, and genomic and epigenomic testing.^[23,24] A meta-analysis of 45 studies (with a total of 6599 EC patients) showed that 45% (95% confidence interval [CI], 40–50%) of participants observed abnormal Pap test results before diagnosis or surgery of EC. This rate was significantly higher than the results for endometrioid subtypes, with 77% (66–87%) versus 44% (34–53%), $P < 0.001$. In conclusion, routine cervical cytology can detect EC in almost half of the patients, but it is more sensitive in patients with non-endometrioid histology or advanced cancer.^[11]

Detection of EC methylation biomarkers using minimally invasive or non-invasive sampling devices such as Tao-brush, cervical brush, vaginal tampon, and self-sampling devices has been reported.^[25,26] Liew *et al.* reported that hypermethylation *BHLHE22/CDO1/HAND2* (87.0% sensitivity and 86.0% specificity) and *BHLHE22/CDO1/TBX5* (89.1% sensitivity and 80.0% specificity) can differentiate benign and malignant endometrial lesions.^[26] A validation study based on multi-hospitals in Asia showed that the sensitivity and specificity of methylated *BHLHE22* and *CDO1* in the detection of Pap samples from women with abnormal uterine bleeding were 92.5–92.9%

and 71.5–73.8%, as a useful strategy for the triage of women with AUB for the detection of EC, respectively.^[27] In this study, we validated the *CDO1*^m and *CELF4*^m test with 87.5% sensitivity and 95.9% specificity as a useful strategy for the triage of women with PMB for the detection of EC. Compared with other research results, the high specificity of *CDO1*^m and *CELF4*^m test is a reasonable method for diagnosis of EC in PMB patients.

This is the first study to validate the effectiveness of methylation test in routine clinical practice of PMB women in northwest China. The *CDO1*^m and *CELF4*^m combination test with high specificity as an auxiliary diagnostic tool or alternative method provides physicians with a reference to distinguish between benign and malignant tumors in women with PMB, to justify the necessity of using invasive methods to confirm diagnosis. Furthermore, the methylation test is a pre-invasive diagnostic assist or an alternative to reduce women's fear or embarrassment and mitigate the possible risks of EC. The test results should be used in combination with the doctor's assessment and the patient's risk factors to guide the patient's individualized management. If confirmed in subsequent studies embedded in PMB clinics, this novel methylation test for EC could transform clinical practice by accurately selecting women with malignant pathology for urgent diagnostic workups while safely reassuring. These results need to be reproduced in the future in large practical diagnostic studies of multiple clinics, which are designed to rapidly track symptomatic women. Therefore,

based on the real-time PCR system widely used during the epidemic of COVID-19 in China, the test can provide real-time results in primary or secondary care in the coming future. Further, research should also evaluate whether methylation tests can distinguish different molecular profiles of EC in the real-world setting.

This study has limitations. First, the study does not indicate the potential confounding effect of other diseases such as diabetes and hypertension. Second, this study does not discuss the potential relationship between *CDO1^m* and *CELF4^m* results and different molecular profiles of EC. Finally, only a few selected patients in one hospital may not be representative of women in northwest China. In the future, multi-center research will be carried out, delving into the *CDO1^m* and *CELF4^m* methods from various perspectives, such as larger sample size, different populations, and diverse medical environments. This comprehensive exploration aims to eliminate biases inherent in single-center data, ensuring a more reliable description and application of the new diagnostic and therapeutic methods.

SUMMARY

This pioneering research has made a potential breakthrough in the early diagnosis of EC through the non-invasive detection of methylation of cervical scraping cells in Gansu, China. The *CDO1* and *CELF4* methylation test with high diagnostic accuracy, objectivity, and repeatability may become an effective triage test for women with PMB, or a screening test for asymptomatic women at risk of EC in the future.

AVAILABILITY OF DATA AND MATERIALS

The data used and/or analyzed during the current study are available from the corresponding author on reasonable request.

ABBREVIATIONS

AUC - Areas under the curve
 BMI - Body mass index
 CA125 - carbohydrate antigen 125
 CDO1 - Cysteine dioxygenase type 1
CDO1^m - *CDO1* methylation detection
 CELF4 - CUGBP Elav-like family member 4
CELF4^m - *CELF4* methylation detection
 D&C - Dilation and curettage
 EC - Endometrial cancer
 ET - Endometrial thickness
 FIGO - The International Federation of Gynecology and Obstetrics
 PMB - Postmenopausal bleeding
 ROC - Receiver operating characteristic
 STARD - Standards for Reporting Diagnostic accuracy studies
 TVUS - Transvaginal ultrasonography.

AUTHOR CONTRIBUTIONS

The manuscript was drafted by WY and CB. MZ and LQ led the study's conceptualization and design. CB was mainly responsible for collecting and evaluating data, and DJ, LZ, WY and LL were involved in this process. CB, DJ, LZ, WY and LL participated in the evaluation of clinical data. WY and WL were mainly responsible for analyzing and interpreting the data, also participating in data and information visualization. LP, MZ and LQ revised the manuscript critically for important intellectual content and approved final version to be published. All authors read and approved the final manuscript. All authors have participated sufficiently in the work and agreed to be accountable for all aspects of the work.

ETHICS APPROVAL AND CONSENT TO PARTICIPATE

This study was approved by the Ethics Committee of the Gansu Provincial Maternity and Child-care Hospital, Gansu, China (IRB No.: 2022-GSFY-49), and it was conducted in accordance with the Declaration of Helsinki.

Written informed consent was obtained from all the participants prior to the publication of this study.

FUNDING

This work was supported by the Lanzhou Science and Technology Project (No.2022-5-92) and Gansu Province Natural Science Foundation (No.23JRRA1380).

CONFLICT OF INTEREST

Authors WY, WL, and LP were employed by the company Beijing Origin-Poly Bio-Tec Co., Ltd. The remaining authors declare that the research was conducted in the absence of any commercial or financial relationships that could be construed as a potential conflict of interest. All authors in Gansu Provincial Maternity and Child-care Hospital declare they have no commercial or financial relationships that could be construed as a potential conflict of interest.

EDITORIAL/PEER REVIEW

To ensure the integrity and highest quality of CytoJournal publications, the review process of this manuscript was conducted under a double-blind model (authors are blinded for reviewers and vice versa) through an automatic online system.

REFERENCES

- Sung H, Ferlay J, Siegel RL, Laversanne M, Soerjomataram I, Jemal A, *et al.* Global Cancer Statistics 2020: GLOBOCAN estimates of incidence and mortality worldwide for 36 cancers

- in 185 countries. *CA Cancer J Clin* 2021;71:209-49.
2. Gaber C, Meza R, Ruterbusch JJ, Cote ML. Endometrial cancer trends by race and histology in the USA: Projecting the number of new cases from 2015 to 2040. *J Racial Ethn Health Disparities* 2016. doi:10.1007/s40615-016-0292-2
 3. Bianchini F, Kaaks R, Vainio H. Overweight, obesity, and cancer risk. *Lancet Oncol* 2002;3:565-74.
 4. Strohl AE, Feinglass JM, Shahabi S, Simon MA. Surgical wait time: A new health indicator in women with endometrial cancer. *Gynecol Oncol* 2016;141:511-5.
 5. Amant F, Moerman P, Neven P, Timmerman D, Van Limbergen E, Vergote I. Endometrial cancer. *Lancet* 2005;366:491-505.
 6. Gottwald L, Pluta P, Piekarski J, Szych M, Hendzel K, Topczewska-Tylinska K, et al. Long-term survival of endometrioid endometrial cancer patients. *Arch Med Sci* 2010;6:937-44.
 7. Van Hanegem N, Breijer MC, Khan KS, Clark TJ, Burger MPM, Mol BW, et al. Diagnostic evaluation of the endometrium in postmenopausal bleeding: An evidence-based approach. *Maturitas* 2011;68:155-64.
 8. Clarke MA, Long BJ, Del Mar Morillo A, Arbyn M, Bakkum-Gamez JN, Wentzensen N. Association of endometrial cancer risk with postmenopausal bleeding in women: A systematic review and meta-analysis. *JAMA Intern Med* 2018;178:1210-22.
 9. ACOG Committee Opinion No. 734: The role of transvaginal ultrasonography in evaluating the endometrium of women with postmenopausal bleeding. *Obstet Gynecol* 2018;131:e124-9.
 10. Breijer MC, Timmermans A, van Doorn HC, Mol BW, Opmeer BC. Diagnostic strategies for postmenopausal bleeding. *Obstet Gynecol Int* 2010;2010:850812.
 11. Frias-Gomez J, Benavente Y, Ponce J, Brunet J, Ibáñez R, Peremiquel-Trillas P, et al. Sensitivity of cervico-vaginal cytology in endometrial carcinoma: A systematic review and meta-analysis. *Cancer Cytopathol* 2020;128:792-802.
 12. Wang Y, Li L, Douville C, Cohen JD, Yen TT, Kinde I, et al. Evaluation of liquid from the Papanicolaou test and other liquid biopsies for the detection of endometrial and ovarian cancers. *Sci Transl Med* 2018;10:eaap8793.
 13. Liu J, Ji C, Wang Y, Zhang C, Zhu H. Identification of methylation-driven genes prognosis signature and immune microenvironment in uterus corpus endometrial cancer. *Cancer Cell Int* 2021;21:365.
 14. Crosbie EJ, Kitson SJ, McAlpine JN, Mukhopadhyay A, Powell ME, Singh N. Endometrial cancer. *Lancet* 2022;399:1412-28.
 15. Bossuyt PM, Reitsma JB, Bruns DE, Gatsonis CA, Glasziou PP, Irwig LM, et al. The STARD statement for reporting studies of diagnostic accuracy: Explanation and elaboration. *Clin Chem* 2003;49:7-18.
 16. Duffy S, Jackson TL, Lansdown M, Philips K, Wells M, Pollard S, et al. The ATAC adjuvant breast cancer trial in postmenopausal women: Baseline endometrial subprotocol data. *BJOG* 2003;110:1099-106.
 17. Yen CF, Chou HH, Wu HM, Lee CL, Chang TC. Effectiveness and appropriateness in the application of office hysteroscopy. *J Formos Med Assoc* 2019;118:1480-7.
 18. Jivraj S, Dass M, Panikkar J, Brown V. Outpatient hysteroscopy: An observational study of patient acceptability. *Medicina (Kaunas)* 2004;40:1207-10.
 19. Herzog C, Marín F, Jones A, Evans I, Reisel D, Redl E, et al. A simple cervicovaginal epigenetic test for screening and rapid triage of women with suspected endometrial cancer: Validation in several cohort and case/control sets. *J Clin Oncol* 2022;40:3828-38.
 20. Morrison J, Balega J, Buckley L, Clamp A, Crosbie E, Drew Y, et al. British Gynaecological Cancer Society (BGCS) uterine cancer guidelines: Recommendations for practice. *Eur J Obstet Gynecol Reprod Biol* 2022;270:50-89.
 21. Long B, Clarke MA, Morillo AD, Wentzensen N, Bakkum-Gamez JN. Ultrasound detection of endometrial cancer in women with postmenopausal bleeding: Systematic review and meta-analysis. *Gynecol Oncol* 2020;157:624-33.
 22. Patsner B, Yim GW. Predictive value of preoperative serum CA-125 levels in patients with uterine cancer: The Asian experience 2000 to 2012. *Obstet Gynecol Sci* 2013;56:281-8.
 23. Huang RL, Su PH, Liao YP, Wu TI, Hsu YT, Lin WY, et al. Integrated epigenomics analysis reveals a DNA methylation panel for endometrial cancer detection using cervical scrapings. *Clin Cancer Res* 2017;23:263-72.
 24. Yuan S, Sun X, Wang L. Prognostic values from integrated analysis of the nomogram based on RNA-binding proteins and clinical factors in endometrial cancer. *Clin Med Insights Oncol* 2022;16. doi:10.1177/11795549221123620
 25. Sangtani A, Wang C, Weaver A, Hoppman NL, Kerr SE, Abyzov A, et al. Combining copy number, methylation markers, and mutations as a panel for endometrial cancer detection via intravaginal tampon collection. *Gynecol Oncol* 2020;156:387-92.
 26. Liew PL, Huang RL, Wu TI, Liao CC, Chen CW, Su PH, et al. Combined genetic mutations and DNA-methylated genes as biomarkers for endometrial cancer detection from cervical scrapings. *Clin Epigenet* 2019;11:170.
 27. Wen KC, Huang RL, Chen LY, Wu TI, Lu CH, Chu TY, et al. Endometrial cancer detection using a cervical DNA methylation assay (MPap) in women with abnormal uterine bleeding: A multicenter hospital-based validation study. *Cancers (Basel)* 2022;14:4343. doi:10.3390/cancers14174343

How to cite this article: Cai B, Du J, Wang Y, Liu Z, Wang Y, Li L, et al. The endometrial cancer detection using non-invasive hypermethylation of *CDO1* and *CELF4* genes in women with postmenopausal bleeding in Northwest China. *CytoJournal*. 2024;21:15. doi: 10.25259/Cytojournal_78_2023

HTML of this article is available FREE at:
https://dx.doi.org/10.25259/Cytojournal_78_2023

The FIRST **Open Access** cytopathology journal

Publish in *CytoJournal* and **RETAIN** your *copyright* for your intellectual property

Become Cytopathology Foundation (CF) Member at nominal annual membership cost

For details visit <https://cytojournal.com/cf-member>

PubMed indexed

FREE world wide open access

Online processing with rapid turnaround time.

Real time dissemination of time-sensitive technology.

Publishes as many **colored high-resolution images**

Read it, cite it, bookmark it, use RSS feed, & many----



CYTOJOURNAL

www.cytojournal.com

Peer-reviewed academic cytopathology journal





NextGen CelBloking™ Kits

**Frustrated with your cell blocks?
We have a better solution!**

Nano

Nano NextGen CelBloking™

Cell block kit to process single scattered cell specimens and tissue fragments of **any** cellularity.



PATENT PENDING



Pack #1



Pack #2

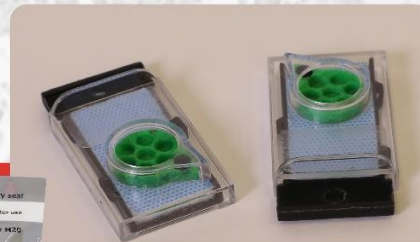
Micro

Micro NextGen CelBloking™

For cellular specimens (more than 1 ml concentrated specimen with Tissuecrit more than 50%)



PATENT PENDING



Pack #1



Pack #2