

Quiz Case

Unusual findings on fine-needle aspiration cytology of a retroperitoneal mass

Mihir Jejurkar Joshi, HS¹, Megha Govind Joshi, MD¹

¹Department of Pathology, Winchester Hospital, Winchester, Massachusetts, United States.



***Corresponding author:**

Megha Govind Joshi,
Department of Pathology,
Winchester Hospital,
Winchester, Massachusetts,
United States.

megha.g.joshi@lahey.org

Received : 11 August 2022
Accepted : 10 January 2023
Published : 09 October 2023

DOI
[10.25259/Cytojournal_28_2022](https://doi.org/10.25259/Cytojournal_28_2022)

Quick Response Code:



A 77-year-old male presented with intermittent abdominal pain. CT scan revealed a 4.7 cm retroperitoneal mass. A subsequent fine-needle aspiration (FNA) with a core biopsy revealed basophilic clumps of acellular homogenous material on Diff Quik stains performed during rapid on site evaluation [Figure 1a]. Pap stain showed greenish round deposits [Figure 1b], whereas cell block showed dense hyalinization and amorphous eosinophilic material amidst benign liver parenchyma [Figure 1c and d].

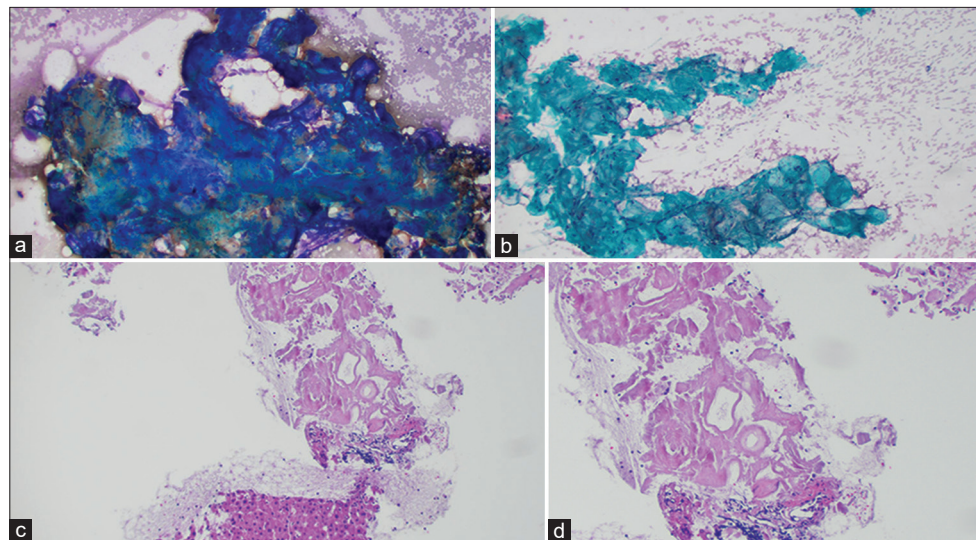


Figure 1: (a) Retroperitoneal fine-needle aspiration (FNA): Diff Quik Stain showing acellular, blue, amorphous material. (b) Retroperitoneal FNA: Pap stain showing acellular, greenish, rounded amorphous material. (c) Retroperitoneal FNA: Cell block with H and E stain showing hyaline deposits of amorphous eosinophilic material, amidst benign liver parenchyma (Low power view). (d) Retroperitoneal FNA: Cell block with H and E stain showing hyaline deposits of amorphous eosinophilic material (High power view).

What is the diagnosis?

- a) Soft-tissue tumor
- b) Solitary fibrous tumor
- c) Collagenous spherulosis
- d) Amyloid

Answer:

d) Amyloid

The most common diagnosis of retroperitoneal masses is a soft-tissue tumor such as a liposarcoma. Other common entities that can lead to retroperitoneal mass formation are lymphomas. Collagenous nodules as seen in our patient on H and E section can be also seen in some cases of retroperitoneal fibrosis. However, in our patient, the collagenous areas were striking and amorphous and immediately raised the possibility of amyloid deposits. The presence of inflammatory cells and plasma cells also favored the diagnosis of amyloid.

The diagnosis was confirmed by positive Congo staining [Figure 2] with apple green birefringence [Figure 3]. Serum protein electrophoresis and immunofixation were negative, but his serum lambda-free light chains were elevated at 109.3 mg/L with a low of kappa/lambda of 0.21 prompting referral to hematology. Liquid chromatography-tandem mass spectrometry was performed on peptides extracted from micro dissected areas of the paraffin-embedded specimen and detected a peptide profile consistent with amyloid light chain (AL) (lambda)-type amyloid deposition, supporting the diagnosis of AL amyloidosis. The patient's abdominal pain had subsided, and bone marrow biopsy was deferred for later. There was not enough evidence to determine if the amyloidosis was systemic or localized.

Amyloidosis is a disease that occurs from the deposition of mis-folded proteins in organs and tissues. Amyloid refers to a group of abnormal proteins that share a β -pleated sheet structure.^[1] This structure makes the proteins insoluble and unsusceptible to enzymatic digestion as well as responsible for its physical attributes such as its amorphous homogenous eosinophilic material and "apple-green" birefringence of Congo red stains under polarized light.^[1]

There are different types of amyloid deposits, but AL (A = amyloid, L = light chain) is the most common and is usually seen to affect older men. In AL amyloidosis, plasma cells produce unstable quantities of monoclonal free light chains.^[2] AL amyloidosis can be of the kappa or lambda type. These free light chains join to form amyloid fibrils, which the body cannot eliminate easily.^[2] Amyloid fibrils start to build up in tissues and organs, inhibiting their function over time. Amyloids can precipitate in the same location, in which they are created resulting in localized amyloidosis. Amyloids can also spread throughout the bloodstream to other organs resulting in systemic amyloidosis.^[3]

Which new specific and sensitive test can confirm the presence of amyloid and also specify the type (AA, AL [Kappa or Lambda], and transthyretin/hereditary type)?

- Congo red staining
- Immunohistochemistry

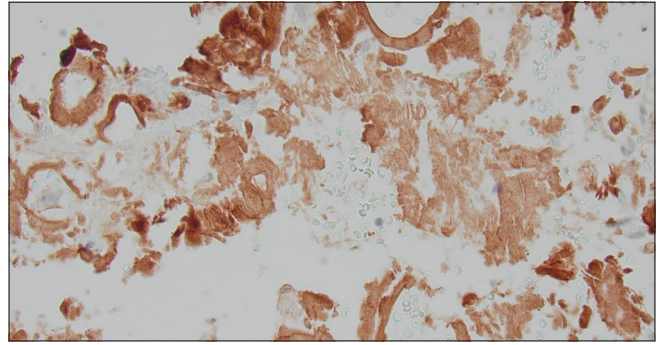


Figure 2: Retroperitoneal fine-needle aspiration: Congo red stain showing brownish red acellular, amorphous deposits.

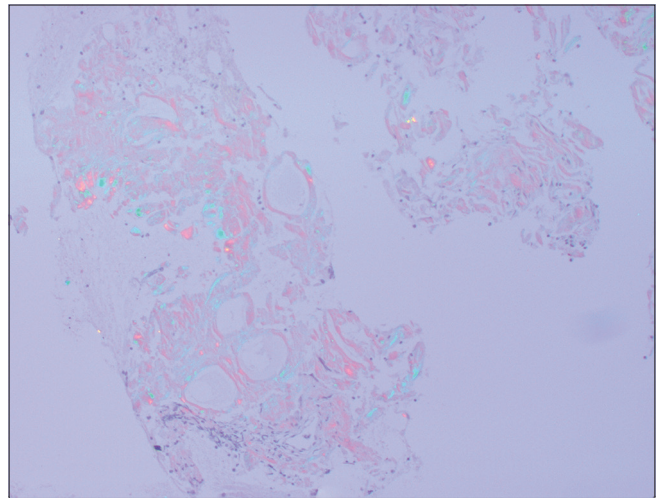


Figure 3: Retroperitoneal fine-needle aspiration: Congo red stain showing apple green birefringence under polarized light.

- Liquid chromatography-tandem mass spectrometry
- Electron microscopy

Answer(s):

- Liquid chromatography-tandem mass spectrometry

AL amyloidosis is typically diagnosed by staining the sample with Congo red and observing for apple-green birefringence. Immunohistochemistry is not useful as it often results in non-specific staining and the sensitivity of the technique is low. Using this process, diagnosis of the specific kind of amyloidosis and determining if it is systemic or localized is difficult. However, technological advancements in mass spectrometry have made it more efficient for diagnosing amyloidosis. Mass spectrometry can analyze specific proteins allowing for a diagnosis of not only amyloidosis but also the type of amyloidosis, giving more options of treatment to the patient. Findings from mass spectrometry can also provide a general diagnosis independent of the application of Congo red staining.^[4] In addition, mass spectrometry can be easily performed on formalin fixed paraffin-embedded tissue.^[4]

ADDITIONAL QUESTIONS

What are the symptoms of AL amyloidosis?

- Shortness of breath
- Chronic kidney disease
- Constipation
- Arrhythmia
- All of the above

Answer(s):

- All of the above

AL amyloidosis is generally found in older men. General symptoms of AL amyloidosis include abnormal bleeding, dizziness, fatigue, shortness of breath, and muscle weakness.^[5] AL amyloidosis also hinders the function of specific organs. A build-up of amyloid proteins in the kidneys can cause chronic kidney disease (renal AL amyloidosis).^[5] Accumulation of amyloid proteins in the heart (AL cardiac amyloidosis) can cause heart palpitations, arrhythmia, shortness of breath, fatigue, as well as thickening of heart tissues increasing the chance of heart failure.^[5] In the gastrointestinal tract, escalation in amyloid proteins can cause weight loss, abdominal pain, constipation, diarrhea, gastric reflux, and vomiting.^[5] Amyloid proteins can also develop in the central nervous system causing changes in blood pressure, erectile dysfunction, pain in the hands, feet, and lower legs, as well as confusion.^[5] Unlike some forms of amyloidosis, AL amyloidosis cannot be transmitted genetically.^[3]

What treatments are implicated on a patient with AL amyloidosis?

- Chemotherapy
- No treatment
- Bone marrow transplant
- Removal of the mass
- All of the above

Answer(s):

- All of the above

There is no known cure for systemic AL amyloidosis. Chemotherapy, like that used in cancer patients, is typically prescribed to slow down the build-up of amyloid proteins by killing cells that produce them.^[6] Another method is bone marrow transplant, also known as a stem cell transplant. Patients with localized amyloidosis do not receive treatment, instead, the mass is removed if it affects organ function; otherwise, the mass can be left in the body.

What is the latest method of confirming a clinical diagnosis of amyloidosis?

- Blood test
- Fat pad biopsy with Congo red staining and electron microscopy

- Anterior fat pad FNA biopsies with mass spectrometry/ proteomics
- Rectal biopsies

Answer:

- Anterior fat pad FNA biopsies with mass spectrometry/ proteomics

Earlier, abdominal fat biopsies for confirming amyloidosis relied on electron microscopy and Congo red staining.^[7] Now, better tests for diagnosis are available, and FNA samples can be aspirated successfully^[8,9] and processed using laser dissection, mass spectrometry, and proteomics.^[10] Rectal mucosal biopsies have been replaced by anterior abdominal wall fat pad FNA technique as shown in videos.^[8,9]

SUMMARY

AL amyloidosis is a rare condition typically found in older male patients. Initial diagnosis of AL amyloidosis usually involves Congo red staining, looking for apple-green birefringence. Mass spectrometry recognizes all amyloid types (AL vs. AA vs. transthyretin/hereditary) and can easily be performed on formalin fixed, paraffin embedded tissue from core biopsies, and cell blocks. It confirms the diagnosis, identifies specific mutations, and helps guide appropriate treatment.

COMPETING INTEREST STATEMENT BY ALL AUTHORS

The authors declare that they have no conflict of interest to report with regards to this article.

AUTHORSHIP STATEMENT BY ALL AUTHORS

Megha Joshi: Concept, design, clinical study, responsibility for the integrity of the work as a whole from inception to published article and is designated as 'guarantor'.

Mihir Joshi: Literature search, data acquisition, data analysis, statistical analysis, manuscript preparation, manuscript editing, and manuscript review.

ETHICS STATEMENT BY ALL AUTHORS

As this is case without identifiers, our institution does not require approval from Institutional Review Board (or its equivalent).

LIST OF ABBREVIATIONS (In alphabetic order)

AA – Amyloid A
 AL – Amyloid Lightchain
 FNA – Fine Needle Aspiration.

EDITORIAL/PEE-RREVIEW STATEMENT

To ensure the integrity and highest quality of CytoJournal publications, the review process of this manuscript was conducted under a **double-blind model** (authors are blinded for reviewers and vice versa) through automatic online system.

REFERENCES

1. Immunohistochemistry in Amyloidosis. Available from: <https://www.propath.com/diagnostic-services/resources/2022/11/amyloidosis?q=immunohistochemistry%20in%20amyloidosis> [Last accessed on 2023 Mar 11].
2. Understanding Free Light Chains (FLCs). Available from: <https://www.amyloidosis.org.uk/about-amyloidosis/al-amyloidosis/understanding-free-light-chains-flcs> [Last accessed on 2023 Mar 11].
3. Vaxman I, Visram A, Pasvolosky O, Kumar S, Dispenzieri A, Buadi F, *et al.* Retroperitoneal involvement with light chain amyloidosis-Case series and literature review. *Leuk Lymphoma* 2021;62:316-22.
4. Dasari S, Theis JD, Vrana JA, Rech KL, Dao LN, Howard MT, *et al.* Amyloid typing by mass spectrometry in clinical practice: A comprehensive review of 16,175 samples. *Mayo Clin Proc* 2020;95:1852-64.
5. Symptoms of AL Amyloidosis. Available from: <https://www.myamyloidosissteam.com/resources/symptoms-of-al-amyloidosis> [Last accessed on 2023 Mar 11].
6. Amyloidosis. Available from: <https://www.hopkinsmedicine.org/health/conditions-and-diseases/amyloidosis>.
7. Devata S, Hari P, Markelova N, Li R, Komorowski R, Shidham VB. Detection of amyloid in abdominal fat pad aspirates in early amyloidosis: Role of electron microscopy and Congo red stained cell block sections. *Cytojournal* 2011;8:11.
8. Shidham VB, Hunt B, Jaradeh SS, Barboi AC, Devata S, Hari P. Performing and processing FNA of anterior fat pad for amyloid. *J Vis Exp* 2010;44:1747.
9. Shidham VB. Updates in processing of anterior fat pad aspirate for amyloid (with video and sketches). *Cytojournal* 2020;17:15.
10. Vrana JA, Gamez JD, Madden BJ, Theis JD, Bergen HR 3rd, Dogan A. Classification of amyloidosis by laser microdissection and mass spectrometry-based proteomic analysis in clinical biopsy specimens. *Blood* 2009;114:4957-9.

How to cite this article: Joshi MJ, Joshi MG. Unusual findings on fine-needle aspiration cytology of a retroperitoneal mass. *Cytojournal* 2023;20:40.

HTML of this article is available FREE at:
https://dx.doi.org/10.25259/Cytojournal_28_2022

The FIRST Open Access cytopathology journal

Publish in *Cytojournal* and **RETAIN** your *copyright* for your intellectual property
Become Cytopathology Foundation Member to get all the benefits
 Annual membership fee is nominal US \$ 50 (US \$ 1000 for life)
In case of economic hardship it is free
For details visit <https://cytojournal.com/cf-member>

PubMed indexed
FREE world wide **open access**
Online processing with rapid turnaround time.
Real time dissemination of time-sensitive technology.
 Publishes as many **colored high-resolution images**
 Read it, cite it, bookmark it, use RSS feed, & many----



CYTOJOURNAL

www.cytojournal.com

Peer-reviewed academic cytopathology journal





NextGen CelBloking™ Kits

**Frustrated with your cell blocks?
We have a better solution!**

Nano

Nano NextGen CelBloking™

Cell block kit to process single scattered cell specimens and tissue fragments of **any** cellularity.



PATENT PENDING



Pack #1



Pack #2

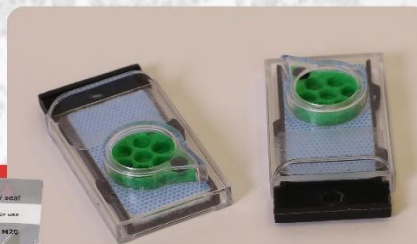
Micro

Micro NextGen CelBloking™

For cellular specimens (more than 1 ml concentrated specimen with Tissuecrit more than 50%)



PATENT PENDING



Pack #2