



Research Article

Surfeit 4 regulates aerobic glycolysis to enhanced proliferation, tumor stemness, invasion, and metastasis in oral squamous cell carcinoma

Wei Yuan, MBBS¹, Tao Tan, PhD¹, Linlin Lu, MBBS², Chaofei Lu, MBBS¹, Yan Zhang, MBBS¹, Baojuan Liu, MBBS²

¹Department of Oral and Maxillofacial Surgery, Hebei Eye Hospital, Xingtai, ²Department of Pathology, Xingtai Medical College, Xingtai, China.



*Corresponding author:

Linlin Lu,
Department of Pathology,
Xingtai Medical College,
Xingtai, China.

sw15132969827@163.com

Received: 22 July 2024

Accepted: 15 October 2024

Published: 30 November 2024

DOI

10.25259/Cytojournal_137_2024

Quick Response Code:



ABSTRACT

Objective: Oral squamous cell carcinoma (OSCC) is a common malignant tumor worldwide. Surfeit 4 (SURF4) is a member of the surfeit gene family and plays a regulatory role in various cellular processes, such as protein transport and lipid metabolism. Therefore, this study aims to investigate the regulatory role and mechanisms of SURF4 in OSCC.

Material and Methods: Serum samples were collected from the normal control and OSCC groups. The function of OSCCs was analyzed through Transwell, 5-ethynyl-2'-deoxyuridine incorporation, and Cell Counting Kit-8 assays. Selected proteins were measured by Western blot analysis. Additional vectors for the overexpression (OE) and knockdown of SURF4 were established. Aerobic glycolysis (AG) was detected through cellular glucose consumption and lactate production assays.

Results: A significant increase was observed in protein and messenger RNA (mRNA) levels of serum SURF4 in OSCC patients compared with the control group ($P < 0.001$). The knockdown of SURF4 alleviated proliferation, invasion, and metastasis in OSCC ($P < 0.001$). Overexpressing SURF4 aggravated proliferation and invasion in OSCC and increased the levels of stem cell genes Octamer-binding Transcription Factor 4 and Sex-determining Region Y-box 2 ($P < 0.001$). Furthermore, adenosine triphosphate levels, lactate levels, and extracellular acidification rate were found to be elevated in the OE SURF4 group, along with higher levels of AG-related regulatory proteins ($P < 0.001$). Inhibiting AG with glycolysis inhibitor 2-deoxyglucose effectively impeded proliferation and invasion in OSCC.

Conclusion: SURF4 plays a role in OSCC by regulating AG to enhance proliferation, tumor stemness, invasion, and metastasis.

Keywords: Surfeit 4, Oral squamous cell carcinoma, Aerobic glycolysis

INTRODUCTION

Oral squamous cell carcinoma (OSCC) is a prevalent malignant tumor.^[1,2] Despite advancements in surgical techniques, radiotherapy, chemotherapy, biological therapy, and reconstructive procedures over the past three decades, the overall prognosis for oral cancer has insignificantly improved.^[3] Cancer cells reprogram their metabolic pathways to sustain their energy and resource requirements. The Warburg effect highlights the preference of tumor cells for highly active aerobic glycolysis (AG) to meet their survival demands.^[4,5] OSCC cells also exhibit distinct alterations in AG and glucose metabolism.^[6,7] Understanding the mechanisms underlying AG in the

development of OSCC offers novel avenues for therapeutic strategies.

Current research has identified Surfeit 4 (SURF4) as part of the Surfeit gene cluster.^[8,9] SURF4 is a cargo receptor involved in transporting proteins between the endoplasmic reticulum and Golgi apparatus.^[9] It also modulates the transport of apolipoprotein B (Apo B), which influences the transportation of very low-density lipoprotein (VLDL) precursors and regulates their secretion.^[10] Liver-specific knockout of SURF4 has been shown to reduce cholesterol and triglyceride.^[11] These findings indicate that SURF4 may affect protein and lipid metabolism, which presents potential clinical applications in cancer occurrence, development, and diagnosis. AG, which is a vital energy metabolism pathway, contributes to proliferation and invasion in cancer cells.

Our study aims to investigate the function and regulatory mechanism of SURF4 in oral cancer through cellular experiments and clinical samples. Specifically, we assessed the influence of SURF4 on proliferation, tumor stemness, invasion, and metastatic capacities in oral cancer cells. We, further, explored the regulatory role of SURF4 in AG and its effects on the metabolic pathways of cancer cells. These findings hold promise in providing innovative targeted strategies for oral cancer treatment. Gaining a deeper

understanding of the functional and regulatory mechanisms of SURF4 can provide new insights and pave the way for oral cancer treatment and prevention.

MATERIAL AND METHODS

Patient sample collection

This study has been approved by the Medical Ethics Committee of Xingtai Medical College, (Approval No.: 2023029). The study began enrolling patients in September 2022 and ended in September 2023. Table 1 records the personal information and medical records of all participants. The inclusion criteria were as follows: patients who have not undergone chemotherapy or radiotherapy; patients who were diagnosed with OSCC; patients who are 18 years of age or older; and patients who provide informed consent to participate in the study. The exclusion criteria were as follows: patients who have received prior chemotherapy or radiotherapy; patients with a history of other malignancies; patients with severe systemic diseases or conditions that could interfere with the study; patients who are pregnant or breastfeeding; and patients who are unable or unwilling to comply with the study procedures. Participants were recruited for the negative control (NC) group, the OSCC group, and

Table 1: Basic clinical characteristics.

No.	Group	Age	Gender	Pathological Stage	Lymph node metastasis
1	Healthy	28	Male		
2	Healthy	34	Female		
3	Healthy	39	Female		
4	Healthy	42	Male		
5	Healthy	46	Male		
6	Healthy	55	Male		
7	OSCC	36	Male	I stage	No
8	OSCC	28	Female	I stage	No
9	OSCC	29	Male	II stage	No
10	OSCC	45	Female	III stage	No
11	OSCC	48	Female	IV stage	No
12	OSCC	53	Male	III stage	No
13	OSCC with LNM	31	Female	IV stage	Yes
14	OSCC with LNM	36	Male	IV stage	Yes
15	OSCC with LNM	39	Male	IV stage	Yes
16	OSCC with LNM	43	Female	IV stage	Yes
17	OSCC with LNM	48	Male	IV stage	Yes
18	OSCC with LNM	56	Female	IV stage	Yes

OSCC: Oral squamous cell carcinoma, LNM: Lymph node metastasis

the OSCC with lymph node metastasis group. Sterile cotton swabs moistened with normal saline were used by dedicated hospital staff to collect oral mucosal epithelial cells or oral cancer cells from patients in a fasting state in the early morning. The freshly collected cell smears were centrifuged at a speed of 3000 rpm for 20 min at 4°C and stored in a -80°C freezer. Subsequently, Western blot analysis and quantitative reverse transcription polymerase chain reaction (qRT-PCR) were conducted to determine SURF4 levels in the cells. All patient samples were collected in compliance.

Cells and reagents

The OSCC cell strains squamous cell carcinoma (SCC)-25 (CRL-1628), CAL-27 (CRL-2095), Tac8113 (CRL-1623), and SCC-4 (CRL-1624) and human normal oral mucosal keratinocytes (hNOKs) were purchased from the ATCC cell bank (Manassas, Virginia, United States). Cells were cultured using Dulbecco's modified Eagle medium (31600, Solarbio, Beijing, China). Before the experimentation, the cell lines were screened for mycoplasma contamination and validated for authenticity using short-tandem repeat analysis.

The selection criteria for the cell lines were based on their relevance to OSCC, which is the primary focus of this study. The cell strains SCC-25, CAL-27, Tac8113, and SCC-4 are well-established OSCC cell lines commonly used in research. These cell lines represent different subtypes of OSCC and exhibit characteristics similar to human OSCC tumors.

hNOKs were included as a control group to compare the behavior and response of OSCC cell lines with non-cancerous oral mucosal cells. This comparison helps identify specific changes and differences associated with the development and progression of OSCC.

The following reagents were purchased for the study: Restriction endonucleases (1022B), SYBR Premix Ex Taq™ II (639676), and reverse transcription reagents (RR037B) from Takara Company (Tokyo, Japan); plasmid extraction and gel recovery reagent kits (28706X4) from QIAGEN (Heidelberg, Germany); transfection reagent Lipofectamine 2,000 (11668500) and RNA extraction reagent Trizol (12183555) from Invitrogen (Carlsbad, California, USA); RIP (P0013B) and sodium dodecyl sulfate polyacrylamide gel electrophoresis (SDS-PAGE) gel preparation kits (P0012A) from Beyotime Biotechnology (Shanghai, China); polyvinylidene fluoride (PVDF) membrane (IPFL00010) from Millipore (Bedford, Massachusetts, USA); and mouse anti-human β-actin (ab8226) from Abcam (Cambridge, MA, USA).

Cloning formation assay

The SCC-4 and Tac8113 cells (1,000 cells/well) were cultured in a 6-well plate for 24 h. They were then placed in a 5% CO₂, 37°C incubator. Cloning formation size was observed from day 10 to day 14. The cells were gently washed with phosphate-

buffered saline (PBS) for 3 times and air-dried. Next, 500 μL of 0.1% crystal violet was added to each well and incubated at 37°C for 30 min. Thereafter, the cells were washed with PBS. Finally, images were captured using a gel imaging system (ChemiDoc, Bio-Rad, Hercules, California, USA).

Cell adenosine 5'-triphosphate (ATP), extracellular acidification rate (ECAR), and lactate production assay

Cellular glucose consumption and lactate production were detected following the procedures outlined in reference.^[12] The lactate (C0016) assay kits were purchased from Beyotime (Shanghai, China). Fluorometric Assay Kit for extracellular acidification rate ECAR (E-BC-F069) and chemiluminescence assay kit for ATP (E-BC-F002) were obtained from Elabscience (Wuhan, Hubei, China). Briefly, cells were enzymatically digested, counted, and plated in a 12-well plate overnight. After the culture medium was removed, fresh complete medium was added to each well, including blank control wells, followed by incubation for 48 h. The supernatant was collected, and the absolute cell number was counted. Lactate content was determined using a DADE BEHRING (RXL MAX) system (Deerfield, Illinois, USA). The levels of ATP and ECAR were analyzed through fluorescent enzyme labeling (Varioskan LUX, Thermo Fisher Scientific, Waltham, MA, USA).

Cell transfection

SCC-4 and TAC8113 were transfected using Lipofectamine 2000 transfection reagent with recombinant plasmids and empty vectors. First, 5 μL of lipid reagent and 4 μg of plasmid were added to 500 μL of culture medium and incubated separately. The two solutions were gently mixed. Cells were washed with the culture medium and added with the abovementioned mixture, followed by the addition of fresh culture medium.

Synthetic short hairpin RNA is a lab-made RNA molecule and was used for SURF4 regulation. Lentiviral vector GV493 was used for gene transfection. GeneChem (Shanghai, China) and Fenghui Biotechnology (Hunan, China) provided gene-related products and services. pLV-CMV-MCS-EF1-ZsGreen1-T2A-Puro was used as a lentiviral vector for gene expression and fluorescence labeling.

The sequence was synthesized by GeneChem Co., Ltd. The sense strand was 5'-AATTCAGCTTCCCTGGCTCTAGCAGCACAGAAATGGAAGCGAGTTCGACATATTGCTGTTGCTGATGCTTCCATATTGGCTGTGCTGCTGTGCATGA-3', and the antisense strand was 5'-CTA ACTTGTGACTCCAGAACGGAA AACGTGTGCTGTGCGCTGGGTTTTGTGAG-3'. It was annealed to form a double-stranded DNA sequence and linked to the pcDNA3.1 vector using T4 DNA ligase to

construct the SURF4 overexpression (OE) vector. The SURF4 knockdown sequences were as follows: the sense strand was 5'-CUCACAGAUCUUUC-UAAGAUU-3', and the antisense strand was 5'-UCUUAGAAGGAUCUGUGAGU-3'. Regarding the choice of specific concentrations for the OE and knockdown experiments, the concentrations were determined based on previous literature.^[9] The aim was to achieve optimal expression or suppression of the target gene while minimizing any potential off-target effects or toxicity.

Thus, cells were divided into the control group, the NC (negative control) group, the SURF4 OE group, and the knockdown group, with six replicates for each group. The transfection efficiency was examined 48 h after transfection.

Cell counting kit-8 (CCK-8) assay

Cells were seeded in a 96-well plate, with three replicates for each group and approximately 5000 cells per well. At 0, 24, 48, and 72 h after seeding, 100 μ L of culture medium (containing 10 μ L of CCK-8 reagent [C0037, Solarbio, Beijing, China]) was added. Before measurement, bubbles were removed, and the optical density value at a wavelength of 450 nm (OD450) was detected using a microplate reader (ELx800, BioTek Instruments, Inc., Windim, Vermont, USA).

Transwell assay

Cell migration assay

Transwell inserts (S2391, BD Biosciences, San Jose, CA, USA) were inserted into a 24-well plate, and the bottom of each Transwell insert was coated with serum-free culture medium to form a chamber. The cells to be tested were suspended in serum-free culture medium (C11965500BT, Gibco, Grand Island, NY, USA) at an appropriate concentration. A certain amount of cell suspension was added to the upper chamber of the Transwell insert. The plate was placed in a cell culture incubator at 37°C for a period of time to allow the cells to migrate to the bottom of the insert. After incubation, the cells in the upper chamber were gently washed with PBS to remove non-migrated cells. The migrated cells at the bottom of the insert were fixed and stained for observation and counting. The number of migrated cells at the bottom of the insert was counted under a microscope (IX71, Olympus, Tokyo, Japan).

Cell invasion assay

Transwell inserts were inserted into a 24-well plate, and the bottom of each Transwell insert was coated with a membrane containing matrix components (Beyotime, C0383, Shanghai, China). The cells to be tested were suspended in serum-free culture medium (C11965500BT, Gibco, Grand Island, NY, USA) at an appropriate concentration. A certain amount of cell suspension was added to the upper chamber of the

Transwell insert (S2391, BD Biosciences, San Jose, CA, USA). The plate was placed in a cell culture incubator at 37°C for a period of time to allow the cells to invade into the bottom of the insert coated with invasion matrix. After incubation, the cells in the upper chamber were gently washed with PBS to remove non-invaded cells. The invaded cells at the bottom of the insert were fixed and stained for observation and counting. The number of invaded cells at the bottom of the insert was counted under a microscope (IX71, Olympus, Tokyo, Japan).

5-ethynyl-2'-deoxyuridine (EdU) incorporation assay

The 96-well plates were inoculated with 1×10^4 cells per well. Subsequently, 100 μ L EdU (C0071S, Beyotime, Shanghai, China) was added to each well, followed by 50 μ L of 4% paraformaldehyde after washing with PBS. The plates were incubated at room temperature for 30 min. After washing with PBS, 0.5% TritonX-100 (9002-93-1, Solarbio, Beijing, China) was added. The cell nuclei were then stained, and fluorescent imaging and image analysis were conducted using a high-content cell imaging system, Operetta (PerkinElmer, Waltham, Massachusetts, USA). The images were analyzed using ImageJ software (v1.8.0.345, National Institutes of Health, Bethesda, MD, USA).

Western blot analysis

Proteins were extracted using radioimmunoprecipitation assay lysate containing 1% phenylmethylsulfonyl fluoride (6542, Roche, Basel, Switzerland). Protein quantification was performed using the Bicinchoninic Acid Assay (BCA) kit (Cat #23225, Thermo Fisher Scientific, Waltham, MA, USA). A 20 μ g protein sample was separated through 10% SDS-PAGE and then transferred to a PVDF membrane (IPVH00010, Millipore Corporation, MA, USA) using Western blot analysis. The membranes were blocked with 5% skim milk powder for 1 h at room temperature, followed by overnight incubation at 4°C with primary antibodies. The primary antibodies included polyclonal rabbit anti-SURF4 (1:1000, ab317407), anti-CD44 (1:1000, ab243894), anti-CD133 (1:1000, ab222782), anti-Hexokinase 2 (1:1000, ab209847), anti-Pyruvate kinase muscle 2 (1:1000, ab85555), anti-glucose transporter type 1 (1:1000, ab115730), anti-Lactate Dehydrogenase A (LDHA) (1:1000, ab52488), anti-phosphorylated adenosine monophosphate-activated protein kinase (AMPK-P) (1:1000, ab133448), anti-AMP-activated protein kinase (AMPK) (1:1000, ab32047), anti-glycogen synthase kinase 3 beta, (GSK-3 β) (1:1000, ab93926), and anti- β -actin (1:8000, ab8226). The secondary antibody was horseradish peroxidase-conjugated to mouse anti-rabbit/mouse immunoglobulin G (1:5000, ab6728, ab6721). Primary and secondary antibodies were purchased from Abcam (Cambridge, MA, USA). The protein bands

were observed by enhanced chemiluminescence (BL520b, Biosharp Life Science, Hefei, Anhui, China) and Image Quant LAS4000 (GE Healthcare, Chicago, IL, USA). Image J (v1.8.0, National Institutes of Health, Bethesda, MD, USA) was used to analyze strip gray values.

qRT-PCR

Total RNA was extracted using Trizol reagent (R0016, Beyotime Biotechnology, Shanghai, China), and reverse-transcribed into cDNA using the ABScript II complementary DNA (cDNA) first-chain synthesis kit (RK20400, ABClonal, Wuhan, Hunan, China). Reverse transcription of RNA into cDNA was conducted according to the instructions of the manufacturer. qRT-PCR was performed using Applied Biosystems' 7500 Real-Time polymerase chain reaction (PCR) System (7500, Thermo Fisher Scientific, Waltham, MA, USA) and Synergy Brands Green PCR Master Mix (4312704, Thermo Fisher Scientific, Waltham, MA, USA). Glyceraldehyde-3-phosphate dehydrogenase (GAPDH) was used as an internal control to determine the relative expression levels using the $2^{-\Delta\Delta Ct}$ technique. The primer sequences (5'-3') used in the study were follows: SURF4 F: ATGGGACAGAACGACCTGATG; R: GGTGTCGATATAGTCACGCTGOCT-4 F: AGAGG ATCACTTGGGGTACA; R: CGAAGCGACAGATGGT GGTC SOX-2 F: GCGGAGTGGAACTTTTGTCC; R: GGG AAGCGTGTACTTATCCTTCT; GAPDH: F: GGT TGAGCA GGTACTTTT, R: AGCAAG AGCA CAAAGAGGAAG.

Statistical analysis

Statistical analysis was performed using GraphPad Prism 7.0 software (GraphPad Software, Inc., San Diego, California, USA), and one-way analysis of variance was conducted for comparison between groups. The difference between the two curves was compared and analyzed using a generalized equation. The results were reported as mean \pm standard error of the mean. * $P < 0.05$ was considered statistically significant.

RESULTS

Elevated serum SURF4 in OSCC: Clinical sample validation

We analyzed clinical samples from a hospital to validate the expression profile of SURF4 in different groups. A total of 18 patients were divided into three groups: the control group ($n = 6$), the OSCC group ($n = 6$), and the OSCC with lymph node metastasis group ($n = 6$). The three groups had no statistically significant difference in age. We observed a significant increase in SURF4 mRNA expression in OSCC patients compared with the control group ($P < 0.001$) [Figure 1a]. Western blot analysis also confirmed elevated levels of SURF4 in OSCC [Figure 1b and c]. Clinical samples confirmed that serum

SURF4 levels were significantly higher in OSCC patients ($P < 0.001$). Moreover, we compared SURF4 expression in different states of OSCC and found a significant increase in the OSCC with lymph node metastasis group compared with the OSCC group ($P < 0.01$, $P < 0.001$). Western blot analysis and quantitative PCR yielded consistent results [Figure 1d-f]. Similarly, we examined SURF4 expression in common OSCC cell lines and found increased expression levels in SCC-25, CAL-27, Tac8113, and SCC-4 compared with human oral keratinocytes (HOKs) ($P < 0.01$, $P < 0.001$) [Figure 1g].

SURF4 regulates the proliferation and invasion abilities of OSCCs

We successfully transfected the SURF4 OE plasmid and small interfering RNA (SURF4) into the OSCC cell lines Tac8113 and SCC-4 to better understand the function of SURF4. As a result, stable cell lines with SURF4 OE and knockdown were established. qRT-PCR results showed that si-SURF4 significantly reduced the mRNA expression levels of SURF4 in Tac8113 and SCC-4 cells compared with the control and si-NC groups [Figure 2a and b] ($P < 0.001$). Conversely, OE-SURF4 significantly increased the mRNA expression levels of SURF4 in Tac8113 and SCC-4 cells compared with the control and OE-NC groups [Figure 2c and d] ($P < 0.001$). The efficiency of silencing and overexpressing SURF4 was further verified, as shown in Figure 2e-l. Western blot analysis results demonstrated successful silencing and OE of SURF4 in Tca8113 and SCC-4 cells.

Transwell invasion assays were conducted to assess the effect of SURF4 on the invasion ability of OSCCs. We observed that SURF4 knockdown significantly reduced the invasion ability ($P < 0.01$, $P < 0.001$) in Tac8113 and SCC-4 cell lines [Figure 3a-c]. Conversely, the OE-SURF4 group exhibited increased invasion ability ($P < 0.001$) [Figures 3d-f]. Therefore, SURF4 plays a role in regulating invasion capability in oral cancer cells. Colony formation assays were performed to evaluate the proliferation ability of OSCCs. We observed a slight decrease in the total number of colonies after si-SURF4 ($P < 0.05$), while the OE-SURF4 group showed a significant increase ($P < 0.001$) [Figure 3g-j], which suggests enhanced proliferation ability in oral cancer cell lines with OE-SURF4. These functional experiments demonstrate the involvement of SURF4 in regulating the proliferation and invasion abilities of OSCCs.

SURF4 aggravates the proliferation of OSCC and increases the level of stem cell genes OCT-4 and SOX-2

CCK-8 assay results showed that, compared with the control group, the OE-SURF4 group significantly increased the viability of OSCC cells ($P < 0.05$), while the si-SURF4 group significantly decreased the viability of OSCC cells

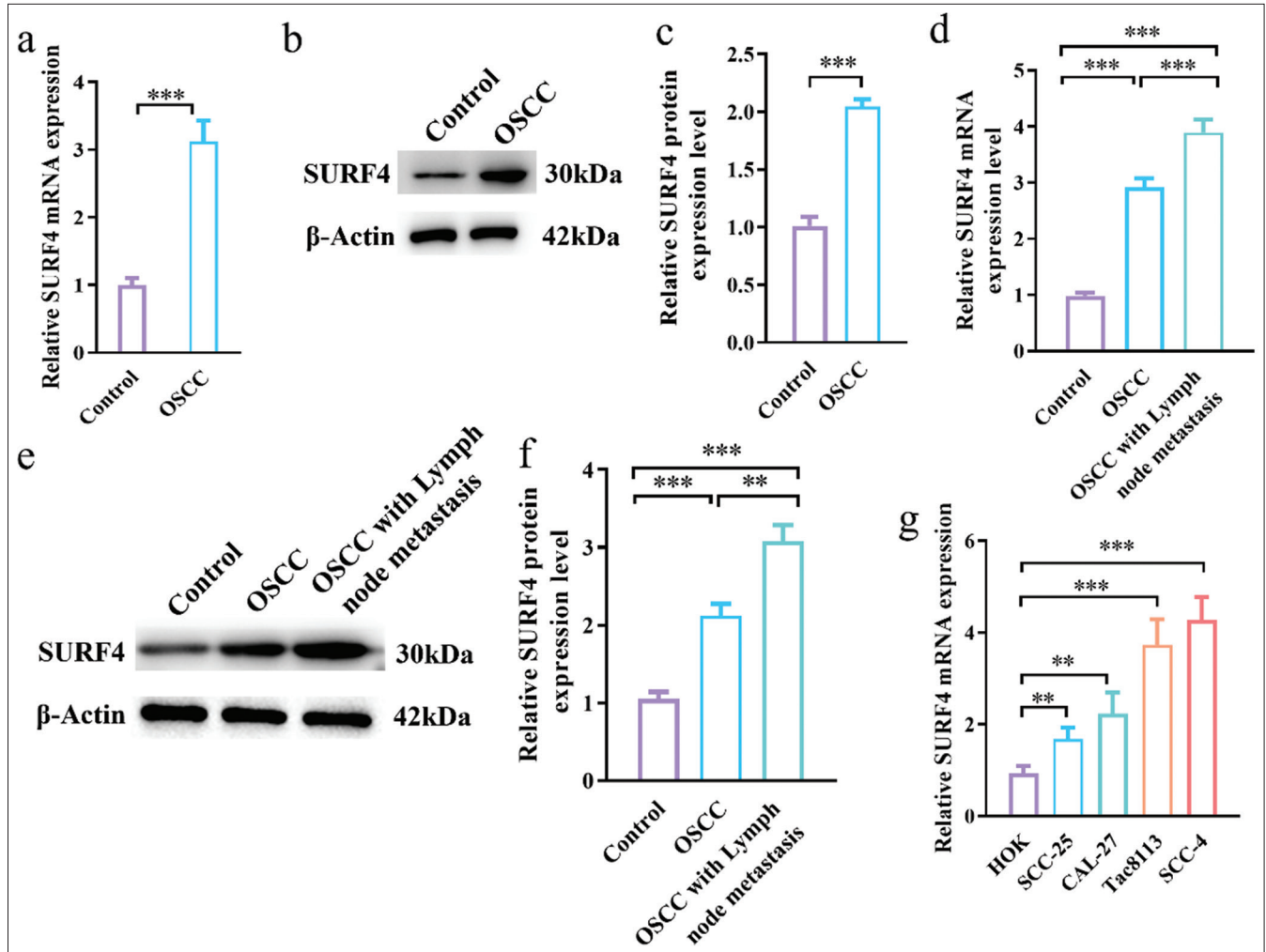


Figure 1: Elevated serum SURF4 in OSCC: clinical sample validation. (a) Histogram showing the relative SURF4 mRNA expression levels in different clinical groups. (b) Western blot analysis of the expression of SURF4 proteins in each group. (c) Histogram showing the SURF4 expression levels in different clinical groups. (d) Histogram showing the SURF4 mRNA expression levels in each group (control, OSCC, and OSCC with lymph node metastasis). (e) Western blot analysis of the expression of SURF4 proteins in each group. (f) Histogram showing the SURF4 expression levels in each group (control group [$n = 6$], OSCC group [$n = 6$], and OSCC with lymph node metastasis group [$n = 6$]). (g) Histogram showing the SURF4 expression levels in different OSCC cell lines. (** $P < 0.01$; *** $P < 0.001$). (SURF4: Surfeit 4, GAPDH: Glyceraldehyde-3-phosphate dehydrogenase, OSCC: Oral squamous cell carcinoma, LNM: Lymph node metastasis, HOK: Human oral keratinocyte, OSCC cell lines: SCC-25, CAL-27, Tac8113, SCC-4: Squamous cell carcinoma-4, mRNA: Messenger RNA.)

($P < 0.01$) [Figure 4a]. Tumor stemness plays crucial role in the development and metastasis of oral cancer. To understand the role of SURF4 in tumor stemness, expression levels of stem cell genes OCT-4 and SOX-2 were compared in SCC-4, which reflected stemness. OE-SURF4 group showed higher expression of OCT-4 and SOX-2 ($P < 0.001$) [Figures 4b and c], whereas it exhibited lower expression after SURF4 knockdown ($P < 0.01$). Similarly, surface markers CD44 and CD133 exhibited consistent results. Increased expression of CD44 and CD133 was observed in the OE-SURF4 group ($P < 0.001$) [Figure 4d-f], while lower levels were found in the SCC-4 cell line after si-SURF4 (P

< 0.05). These findings suggest that SURF4 may impact the proliferation and invasion of oral cancer through its effect on tumor stemness. Next, we employed EdU incorporation to validate the proliferative capacity of OSCCs ($P < 0.001$ control vs. OE-SURF4) [Figure 4g and h]. The results established that SURF4 may exert an influence on proliferation and invasion in oral cancer by impacting tumor stemness.

SURF4 impacts OSCC functionality by modulating AG

Research suggests that SURF4 is implicated in lipid transport and cellular metabolism, with tumor cells heavily relying on AG to sustain heightened proliferation. Therefore, we sought

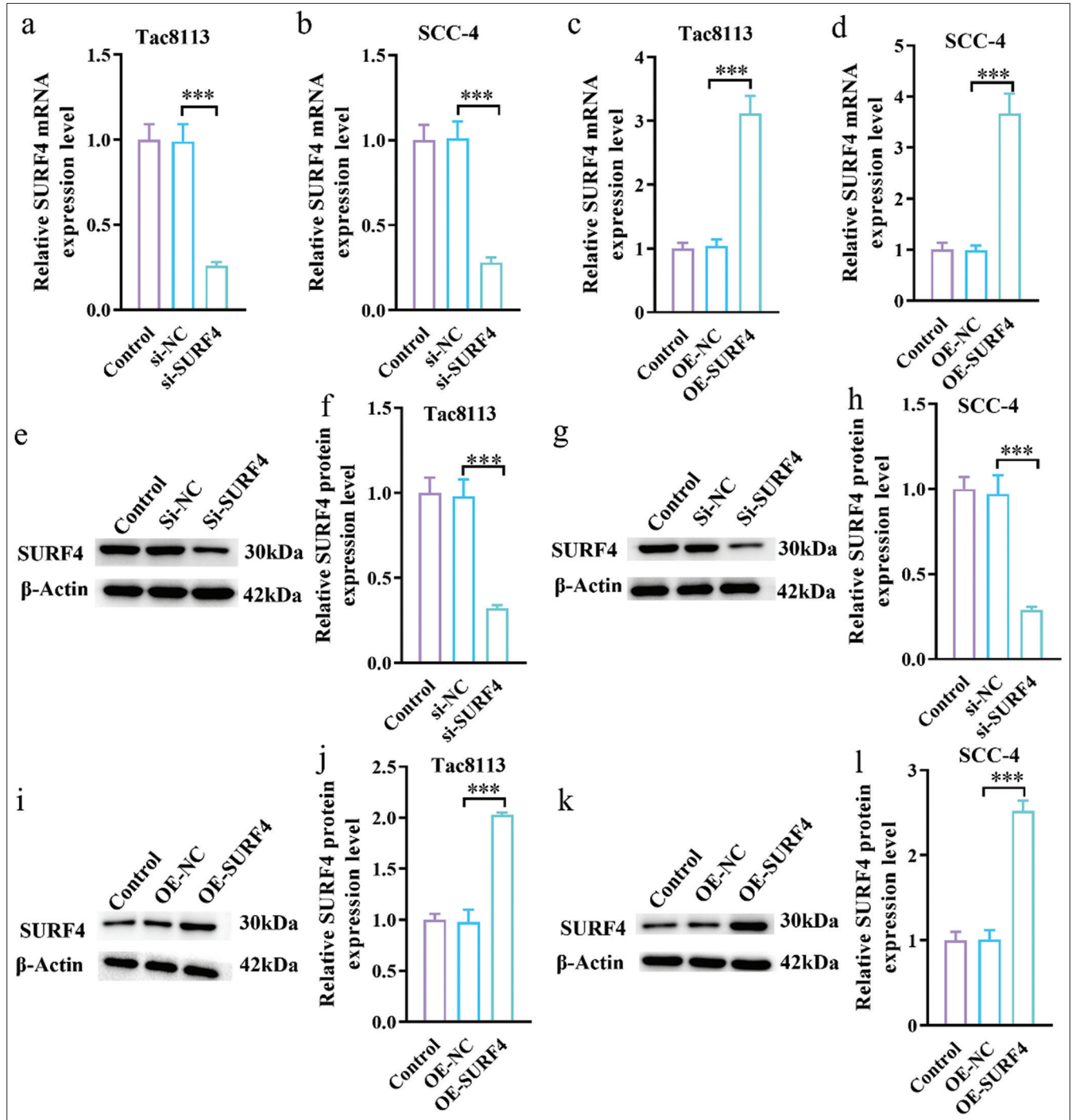


Figure 2: SURF4 overexpression plasmid and siRNA (SURF4) were successfully transfected into OSCC cells. (a and b) siRNA (SURF4) reduced the mRNA levels of SURF4 in Tac8113 and SCC-4 cells. (c and d) The SURF4 overexpression plasmid increased the mRNA levels of SURF4 in Tac8113 and SCC-4 cells. (e-h) The expression of SURF4 in Tca8113 and SCC-4 cells after silencing SURF4 was analyzed by Western blot analysis. (i-l) The expression of SURF4 in Tca8113 and SCC-4 cells after overexpressing SURF4 was analyzed by Western blot analysis ($n = 6$) (** $P < 0.001$). (SURF4: Surfeit 4, OSCC: Oral squamous cell carcinoma, siRNA (SURF4): si-SURF4, OE-SURF4: Overexpression SURF4, OSCC cell lines: Tac8113, SCC-4: Squamous cell carcinoma-4, siRNA: Small interfering RNA, mRNA: Messenger RNA.)

to ascertain the involvement of SURF4 in AG within oral cancer cells. Accordingly, we conducted AG assays on SCC-4 oral cancer cells in the OE-SURF4 and si-SURF4 groups. Remarkably, ATP levels ($P < 0.05$) [Figure 5a] and lactate

levels [Figure 5b] ($P < 0.001$) were found to be elevated in the OE-SURF4 group, which implies an upregulated glycolytic state. Conversely, a notable reduction was observed in ATP and lactate levels ($P < 0.001$) on si-SURF4

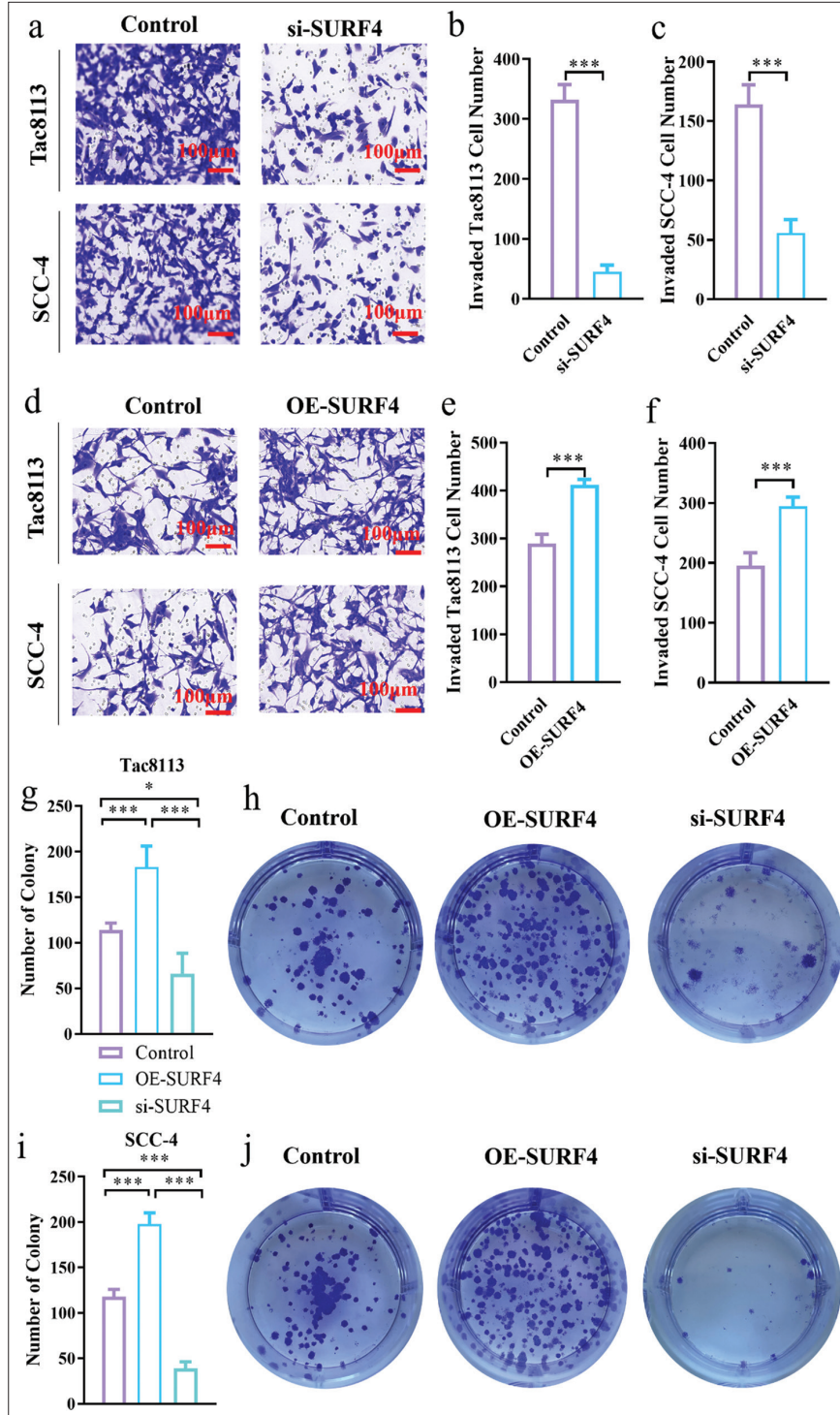


Figure 3: SURF4 regulates the proliferation and invasion abilities of OSCCs. (a) Representative images of Transwell assay of OSCC (scale bar: 100 μ m). (b and c) Histogram showing the invaded cell number. (d) Representative images of Transwell assay of OSCC (scale bar: 100 μ m). (e and f) Histogram showing the invaded cell number. (g) Histogram showing the number of colonies in Tac8113. (h) Representative images of OSCC colony in Tac8113. (i) Histogram showing the number of colonies in SCC-4. (j) Representative images of OSCC colony in SCC-4. ($n = 6$ for each group). ($*P < 0.05$, $***P < 0.001$. SURF4: Surfeit 4, OSCC: Oral squamous cell carcinoma, siRNA (SURF4): si-SURF4, OE-SURF4: Overexpression SURF4, OSCC cell lines: Tac8113, SCC-4: Squamous cell carcinoma-4, siRNA: Small interfering RNA.)

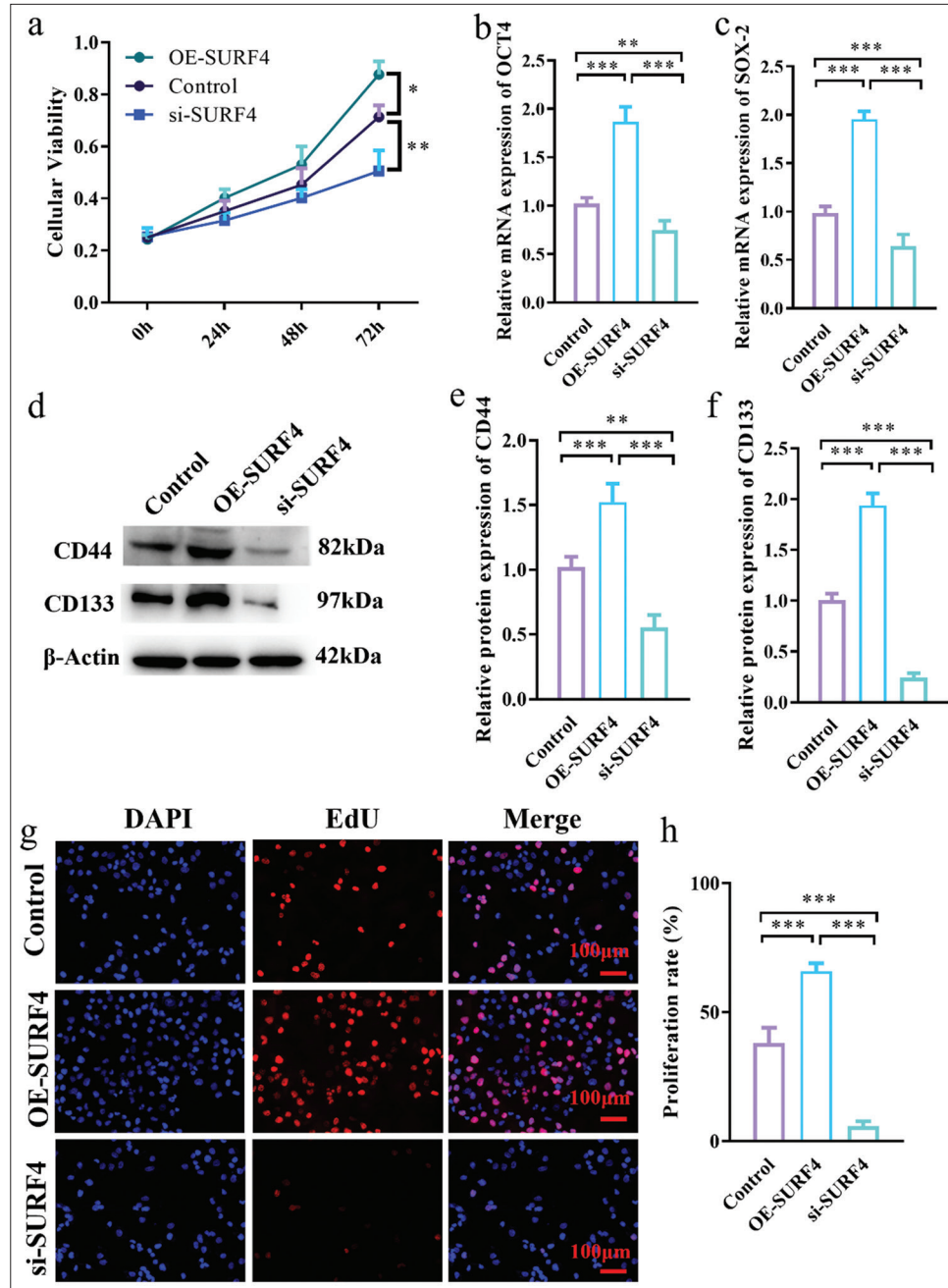


Figure 4: SURF4 aggravates OSCC proliferation and increases the level of stem cell genes OCT-4 and SOX-2. (a) Histogram showing cell viability. (b) Histogram showing the relative OCT-4 mRNA expression level. (c) Histogram showing the relative SOX-2 mRNA expression level. (d) Western blot analysis of the expression of target proteins. (e and f) Histogram showing the target proteins expression level. (g) Representative images of EdU incorporation assay of OSCC in SCC-4 (scale bar: 100 μ m). (h) Histogram showing the proliferation rate in SCC-4. ($n = 6$ for each group). (* $P < 0.05$; ** $P < 0.01$; *** $P < 0.001$). SURF4: Surfeit 4, OSCC: Oral squamous cell carcinoma, siRNA (SURF4): si-SURF4, OE-SURF4: Overexpression SURF4, OCT-4: Octamer-binding transcription factor 4, SOX-4: Sex-determining region Y-box 4, CD44: Cluster of differentiation 44, CD133: Cluster of differentiation 133; β -Actin: Beta-actin, EdU: 5-Ethynyl-2'-deoxyuridine, DAPI: 4',6-diamidino-2-phenylindole, SCC-4: Squamous cell carcinoma-4, siRNA: Small interfering RNA, mRNA: Messenger RNA.)

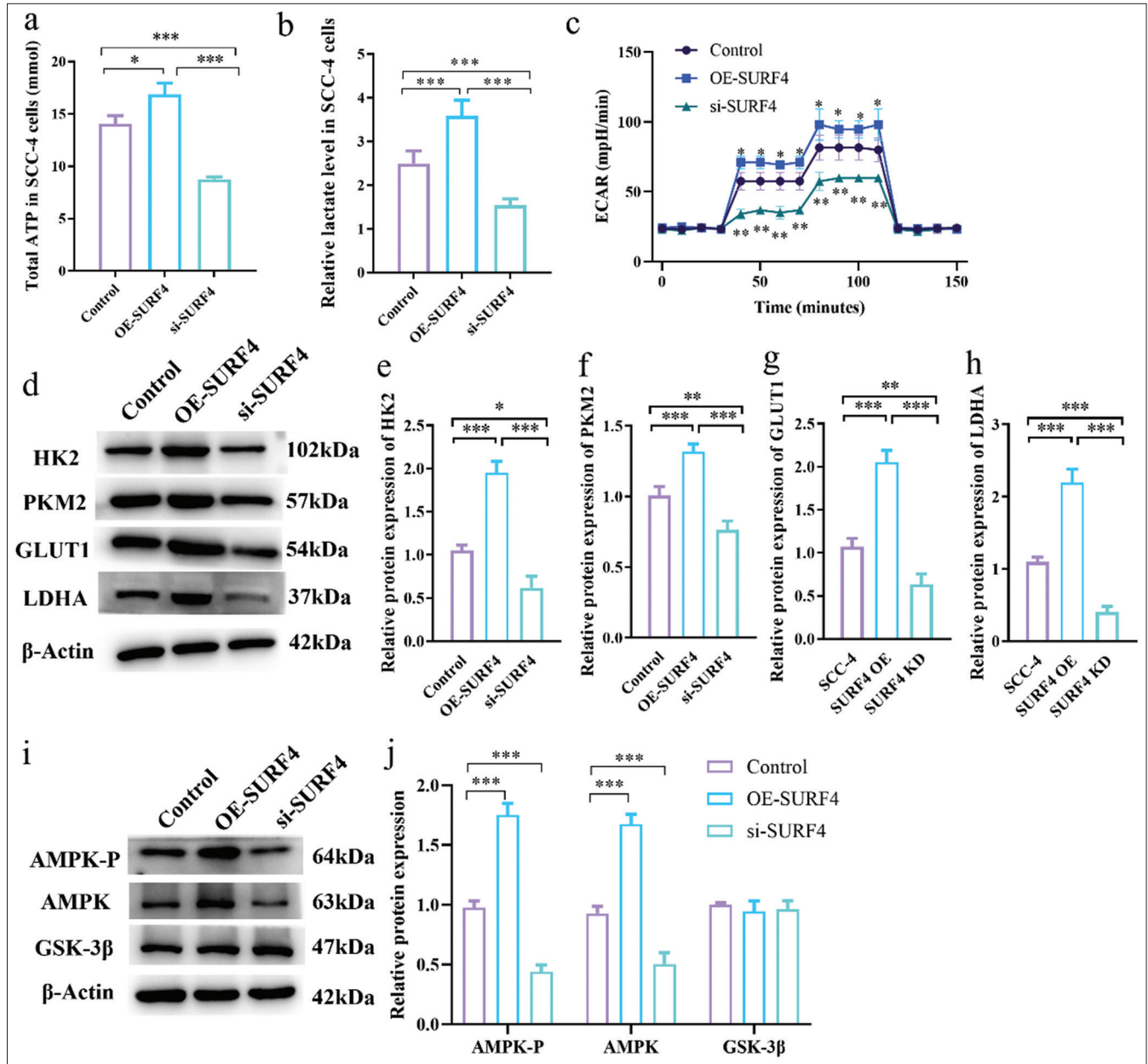


Figure 5: SURF4 impacts OSCC functionality by modulating AG. (a) Histogram showing total ATP (mmol). (b) Histogram showing relative lactate level. (c) Histogram showing ECAR (mpH/min) level. (d) Western blot analysis of the expression of target proteins. (e-h) Histogram showing the expression levels of target proteins. (i) Western blot analysis of the expression of target proteins. (j) Histogram showing the expression levels of target proteins. ($n = 6$ for each group). (* $P < 0.05$; ** $P < 0.01$; *** $P < 0.001$. SURF4: Surfeit 4, OSCC: Oral squamous cell carcinoma, AG: Aerobic glycolysis, ATP: Adenosine triphosphate, ECAR: Extracellular acidification rate, siRNA (SURF4): si-SURF4, OE-SURF4: Overexpression SURF4, HK2: Hexokinase 2, PKM2: Pyruvate kinase muscle 2, GLUT1: Glucose transporter type 1, LDHA: Lactate dehydrogenase A: AMPK-P: Phosphorylated AMP-activated protein kinase, AMPK: AMP-activated protein kinase, GSK-3 β : Glycogen synthase kinase 3 beta, β -Actin: Beta-actin, siRNA: Small interfering RNA.)

in the SCC-4 cell line. Mitochondrial function, AG, and oxidative phosphorylation processes were evaluated through extracellular acidification rate (ECAR) measurements. The results revealed a significant increase in ECAR levels ($P < 0.05$) at various time points for the OE-SURF4 group,

whereas ECAR levels displayed a considerable decrease ($P < 0.01$) in the si-SURF4 group [Figure 5c]. Furthermore, we assessed the expression of AG biomarkers, namely, hexokinase 2, pyruvate kinase M2, glucose transporter 1, and LDHA, as well as the AG-related regulatory

proteins AMPK-P, AMPK, and GSK-3 β . Western blot analysis unveiled elevated levels of AG-related regulatory proteins, except GSK-3 β , in the OE-SURF4 group, while target proteins were diminished in the si-SURF4 group ($P < 0.05$, $P < 0.01$, and $P < 0.001$) [Figure 5d-j]. Overall, these findings substantiate the potential of SURF4 to impact the functionality of tumor cells by modulating AG.

Inhibiting AG effectively impedes SURF4-induced promotion of proliferation and invasion in OSCC

Given that SURF4 can influence AG and subsequently facilitate tumor cell proliferation and metastasis, we postulated whether inhibiting AG could impede SURF4-mediated regulation of oral cancer cells. We introduced the AG inhibitor 2-deoxyglucose (2-DG) to investigate the role of AG in OSCC progression. The decision to use 2-DG as AG inhibitor was based on the previous study^[13] supporting its efficacy in blocking glucose metabolism. 2-DG is a glucose analog that can enter cells and compete with glucose for phosphorylation by hexokinase, which inhibits AG. We introduced 2-DG to the OE-SURF4 group of SCC-4 oral cancer cells for validation, which resulted in a reduction in lactate levels ($P < 0.001$) [Figure 6a] and ECAR ($P < 0.01$) [Figure 6b]. Subsequent CCK-8 experiments were conducted to evaluate proliferation capacity in oral cancer cells, which revealed a diminished proliferative potential in the OE-SURF4 group following 2-DG treatment ($P < 0.01$) [Figure 6c]. Furthermore, when 2-DG was added, the protein levels associated with tumor stemness exhibited a decrease ($P < 0.001$) [Figure 6d]. Transwell ($P < 0.01$, $P < 0.001$) [Figure 6e and f] and EdU assays ($P < 0.01$, $P < 0.001$) [Figure 6g and h] were conducted to assess proliferation and invasion functionality in oral cancer cell. The analysis affirmed that inhibiting AG can effectively impede SURF4-induced promotion of proliferation and invasion in oral cancer cell.

DISCUSSION

OSCC is a prevalent malignant tumor, which accounts for 90% of head-and-neck malignancies.^[14] The development of OSCC is a multifaceted process characterized by malignant cells exhibiting unlimited replicative capacity, apoptosis evasion, tissue invasion, and metastasis.^[15] Cancer cells must reprogram their metabolic pathways to sustain the energy and molecular requirements necessary for acquiring and maintaining the aforementioned traits.^[16] OSCCs also exhibit alterations in AG and glucose metabolism compared with normal cells.^[17] These cancer cells preferentially rely on highly active AG, a phenomenon known as the Warburg effect, to meet their metabolic demands.

Recent research has elucidated the role of SURF4, which is a member of the Surfeit gene cluster.^[18] SURF4 is widely expressed and localized to the endoplasmic reticulum membrane, which participates in the transport of various proteins between the endoplasmic reticulum and the Golgi apparatus. Furthermore, SURF4 is involved in the transport of Apo B, which impacts the transport of molecules of VLDL precursors and thus regulates their secretion.^[19] Studies have shown that depletion of SURF4 significantly reduces plasma total cholesterol and triglyceride levels, which highlights its relevance in protein and lipid metabolism with potential clinical implications.^[19,20] Another study has linked SURF4 to breast cancer,^[21] which reinforces its association with cancer and suggests its potential as a therapeutic target in multiple cancer types. Discussing the mechanisms underlying AG in cancer progression can provide a more thorough understanding of the metabolic reprogramming observed in OSCC and its implications for cancer development and treatment.

Our findings underscore the pivotal role of SURF4 in the proliferation, tumorigenicity, invasion, and metastasis of oral cancer by modulating AG. OE of SURF4 in oral cancer cells leads to heightened ATP and lactate levels, augmented lactate production rates, and enhanced glycolytic activity. These conditions, in turn, foster cellular proliferation, invasion, and the maintenance of tumor stem cell populations. Conversely, inhibition of SURF4 suppresses lactate production and AG, which impedes the proliferation, tumorigenicity, invasion, and metastasis of oral cancer cells.

Some limitations and potential confounding factors can influence the outcomes of the study. One factor is the inherent variability in cell line models. While cell lines in our study are widely used as models for investigating OSCC, they may fail to fully recapitulate the complexity and heterogeneity of the actual patient population. Variations in genetic backgrounds, mutations, and cellular responses among different cell lines can potentially impact the results of the study. Another confounding factor to consider is the impact of different cell culture conditions. Cell culture techniques, such as the choice of growth media, supplements, and culture conditions, can influence cellular behavior and gene expression patterns. Variations in culture conditions between laboratories or even within the same study can introduce variability in the results. Furthermore, the generalizability of the findings to the broader OSCC patient population should be considered. Studies conducted using cell lines and *in vitro* models provide valuable insights but may fail to fully reflect the complexities of the disease in a clinical setting. Factors such as tumor microenvironment, immune responses, and patient-specific characteristics can greatly influence the outcomes observed in real patients. Therefore, the limitations of the study

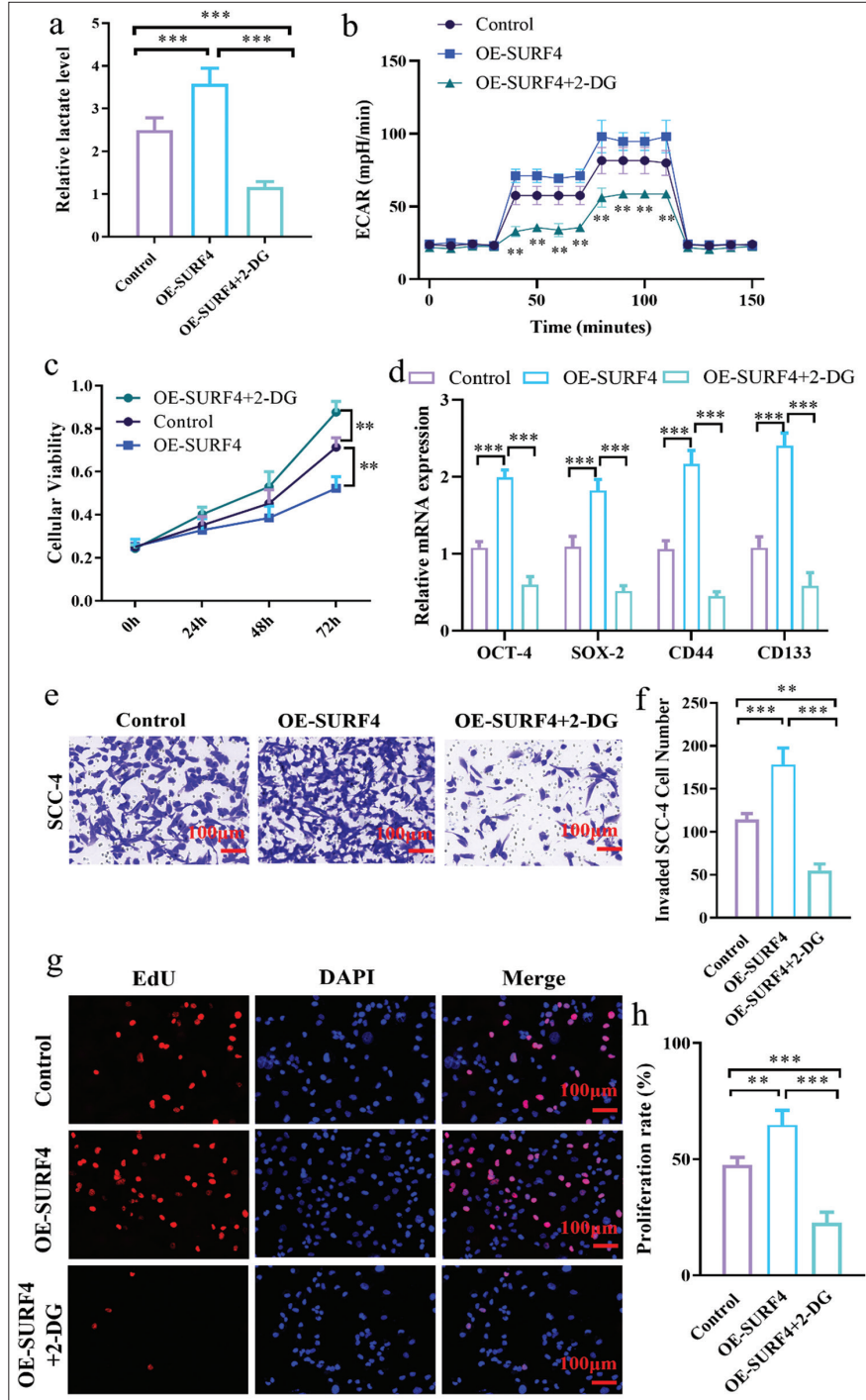


Figure 6: Inhibiting AG effectively impedes SURF4-induced promotion of proliferation and invasion in OSCC. (a) Histogram showing relative lactate level. (b) Histogram showing ECAR (mpH/min) level; (c) Histogram showing cell viability; (d) Histogram showing the relative mRNA expression level. (e) Representative images of Transwell assay of OSCC (scale bar: 100 μm). (f) Histogram showing the invaded cell number. (g) Representative images of EdU incorporation assay (scale bar: 100 μm). (h) Histogram showing the proliferation rate. (*n* = 6 for each group). (** *P* < 0.01; *** *P* < 0.001. AG: Aerobic glycolysis, SURF4: Surfeit 4, OSCC: Oral squamous cell carcinoma, OE-SURF4: Overexpression SURF4, 2-DG: 2-Deoxy-D-glucose, ECAR: Extracellular acidification rate, OCT-4: Octamer-binding transcription factor 4, SOX-4: Sex-determining region Y-box 4, EdU: 5-Ethynyl-2'-deoxyuridine, DAPI: 4', 6-Diamidino-2-phenylindole, OSCC cell lines: Squamous cell carcinoma-4, mRNA: Messenger RNA.)

should be considered, and further research involving clinical samples and patient cohorts is needed to validate and extend the findings.

Exploring the potential clinical implications of these findings in future studies is highly valuable. Discussing the practical implications of the findings of this study for the diagnosis, treatment, or prognosis of OSCC can provide valuable insights for clinicians and researchers. Further research can focus on targeting SURF4 to inhibit tumor growth or influence glucose metabolism in OSCC, which can suggest the potential for SURF4 as a therapeutic target. This analysis can involve discussing potential mechanisms of action, known, or proposed inhibitors of SURF4, or the feasibility of targeting SURF4 in clinical settings. This expanded exploration can inspire further research and potentially inform the development or repurposing of therapeutic strategies for OSCC patients. It can also lead to further investigations on developing targeted therapies or combination treatments for OSCC patients. By expanding on the potential clinical implications, discussing the limitations more comprehensively, and exploring the therapeutic targeting of SURF4 in OSCC, the study can provide a more well-rounded and impactful discussion, which can benefit the scientific community and clinical practitioners.

Meanwhile, incorporating additional experimental approaches to confirm the findings is a valuable consideration in future works. For example, conducting *in vivo* studies or employing patient-derived xenograft (PDX) models can provide further validation of the role of SURF4 in OSCC progression and response to AG inhibition. *In vivo* models allow for the examination of the effects of SURF4 in a more physiological context, which can better simulate the complex interactions within a living organism. PDX models, which are derived from patient tumors, can provide a valuable platform to assess the relevance of SURF4 in the context of individual patient responses and contribute to personalized medicine approaches.

Investigating the downstream effectors of SURF4-mediated changes in AG and their impact on OSCC pathophysiology can offer deeper insights into the molecular mechanisms underlying this regulatory role. Determining the specific signaling pathways, gene expression changes, or metabolic alterations downstream of SURF4 can help unravel the intricate network of molecules and processes involved in the development and progression of OSCC. This approach can provide a more comprehensive understanding of the molecular mechanisms underlying the observed effects of SURF4 and identify potential targets for therapeutic intervention. By discussing these future directions, the study acknowledges the potential for further research and opens up opportunities for expanding the current findings.

Therefore, SURF4 emerges as a promising therapeutic target, and interventions aimed at its modulation hold potential in the clinical treatment of oral cancer. Understanding the molecular mechanisms underlying OSCC progression and the role of SURF4 can potentially lead to the development of novel therapeutic strategies. Therapies targeting SURF4 or downstream effectors identified in the study can be explored, such as small molecule inhibitors or gene therapies, to specifically target OSCC cells exhibiting high levels of SURF4 expression and dysregulated glucose metabolism.

The findings of this study can have implications for diagnostic and prognostic approaches in OSCC. The identification of SURF4 as a potential biomarker can contribute to the development of non-invasive diagnostic tools or the refinement of existing diagnostic methods. Furthermore, the correlation between SURF4 expression levels and markers of aggressive tumor behavior or poor prognosis can help in stratifying patients and guiding treatment decisions. By assessing the intricate mechanisms of SURF4, we can provide novel theoretical insights that advance the treatment of oral cancer, which offers patients more effective and personalized therapeutic options.

SUMMARY

Our study provides evidence for the regulatory role of SURF4 in OSCC. We observed increased levels of SURF4 in the serums of OSCC patients, and further experiments revealed its involvement in promoting the proliferation, invasion, and metastasis of OSCC cells. Notably, the OE of SURF4 resulted in elevated AG, as indicated by increased glucose consumption, lactate production, and levels of AG-related regulatory proteins. Importantly, inhibiting AG with AG inhibitor effectively blocked the SURF4-induced promotion of proliferation and invasion in OSCC. These findings suggest that SURF4 plays a critical role in regulating AG, which contributes to enhanced proliferation, tumor stemness, invasion, and metastasis in OSCC. Further investigations into the underlying mechanisms of SURF4-mediated regulation of AG may lead to potential therapeutic targets for OSCC treatment.

AVAILABILITY OF DATA AND MATERIALS

The datasets used and/or analyzed during the present study were available from the corresponding author on reasonable request.

ABBREVIATIONS

OSCC – Oral squamous cell carcinoma
SURF4 – Surfeit 4
LNM – Lymph node metastasis

EdU – 5-Ethynyl-2'-deoxyuridine
 CCK-8 – Counting Kit-8
 AG – Aerobic glycolysis
 OCT-4 – Octamer-binding transcription factor 4
 SOX-2 – Sex-determining region Y-box 2
 ATP – Adenosine triphosphate
 ECAR – Extracellular acidification rate
 2-DG – 2-deoxyglucose
 hNOK – Human normal oral mucosal keratinocytes
 DMEM – Dulbecco's modified eagle medium
 STR – Short-tandem repeat

AUTHOR CONTRIBUTIONS

WY and TT: Designed the study; all authors conducted the study; CFL and YZ: Collected and analyzed the data; WY, LLL, and BJL: Participated in drafting the manuscript, and all authors contributed to critical revision of the manuscript for important intellectual content. All authors gave final approval of the version to be published. All authors participated fully in the work, take public responsibility for appropriate portions of the content, and agree to be accountable for all aspects of the work in ensuring that questions related to the accuracy or completeness of any part of the work are appropriately investigated and resolved.

ETHICS APPROVAL AND CONSENT TO PARTICIPATE

This study has been approved by the Medical Ethics Committee of Xingtai Medical College, (Approval No.: 2023029, Date: 2023.11.1). The informed consent of all patients was obtained. Human material and human data were conducted in accordance with the Declaration of Helsinki.

FUNDING

Not applicable.

CONFLICT OF INTEREST

The authors declare no conflict of interest.

EDITORIAL/PEER REVIEW

To ensure the integrity and highest quality of CytoJournal publications, the review process of this manuscript was conducted under a **double-blind model** (authors are blinded for reviewers and vice versa) through an automatic online system.

REFERENCES

1. Khijmatgar S, Yong J, Rübsamen N, Lorusso F, Rai P, Cenzato N, *et al.* Salivary biomarkers for early detection of Oral Squamous

- Cell Carcinoma (OSCC) and Head/Neck Squamous Cell Carcinoma (HNSCC): A systematic review and network meta-analysis. *Jpn Dent Sci Rev* 2024;60:32-9.
2. Fonsêca TC, Jural LA, Marañón-Vásquez GA, Magno MB, Roza AL, Ferreira DM, *et al.* Global prevalence of human papillomavirus-related oral and oropharyngeal squamous cell carcinomas: A systematic review and meta-analysis. *Clin Oral Investig* 2023;28:62.
3. Manikkath J, Manikkath A, Lad H, Vora LK, Mudgal J, Shenoy RR, *et al.* Nanoparticle-mediated active and passive drug targeting in oral squamous cell carcinoma: Current trends and advances. *Nanomedicine (Lond)* 2024;18:2061-80.
4. Alberghina L. The Warburg effect explained: Integration of enhanced glycolysis with heterogeneous mitochondria to promote cancer cell proliferation. *Int J Mol Sci* 2023;24:15787.
5. Ravi AK, Muthukrishnan SK. Combination of probiotics and natural compounds to treat multiple sclerosis via Warburg effect. *Adv Pharm Bull* 2022;12:515-23.
6. Heawchaiyaphum C, Yoshiyama H, Iizasa H, Burassakarn A, Tumurgan Z, Ekalaksananan T, *et al.* Epstein-barr virus promotes oral squamous cell carcinoma stemness through the Warburg effect. *Int J Mol Sci* 2023;24:14072.
7. Zhang Z, Gao Z, Rajthala S, Sapkota D, Dongre H, Parajuli H, *et al.* Metabolic reprogramming of normal oral fibroblasts correlated with increased glycolytic metabolism of oral squamous cell carcinoma and precedes their activation into carcinoma associated fibroblasts. *Cell Mol Life Sci* 2020;77:1115-33.
8. Devireddy S, Ferguson SM. Efficient progranulin exit from the ER requires its interaction with prosaposin, a Surf4 cargo. *J Cell Biol* 2022;221:e202104044.
9. Wu L, He S, Ye W, Shen J, Zhao K, Zhang Y, *et al.* Surf4 facilitates reprogramming by activating the cellular response to endoplasmic reticulum stress. *Cell Prolif* 2021;54:e13133.
10. Tang VT, McCormick J, Xu B, Wang Y, Fang H, Wang X, *et al.* Hepatic inactivation of murine *Surf4* results in marked reduction in plasma cholesterol. *Elife* 2022;11:e82269.
11. Chang X, Zhao Y, Qin S, Wang H, Wang B, Zhai L, *et al.* Loss of hepatic Surf4 depletes lipid droplets in the adrenal cortex but does not impair adrenal hormone production. *Front Cardiovasc Med* 2021;8:764024.
12. Leitner GC, Hagn G, Niederstaetter L, Bileck A, Plessl-Walder K, Horvath M, *et al.* INTERCEPT pathogen reduction in platelet concentrates, in contrast to gamma irradiation, induces the formation of trans-arachidonic acids and affects eicosanoid release during storage. *Biomolecules* 2022;12:1258.
13. Tan C, Gu J, Chen H, Li T, Deng H, Liu K, *et al.* Inhibition of aerobic glycolysis promotes neutrophil to influx to the infectious site via CXCR2 in sepsis. *Shock* 2020;53:114-23.
14. Singh M, Thankappan K, Balasubramanian D, Pillai V, Shetty V, Rangappa V, *et al.* Contrasting clinical outcomes and socio-economic impact of young versus elderly-onset oral squamous cell carcinoma, a novel health economic analysis. *Cancer Med* 2024;13:e6747.
15. Le Meitour Y, Foy JP, Guinand M, Michon L, Karabajakian A, Fayette J, *et al.* Uncovering immune checkpoint heterogeneity in oral squamous cell carcinoma using single cell RNA-sequencing data highlights three subgroups of patients with

- distinct immune phenotypes. *Oral Oncol* 2024;149:106680.
16. Xiang K, Kunin M, Larafa S, Busch M, Dünker N, Jendrossek V, *et al.* α -Ketoglutarate supplementation and NAD⁺ modulation enhance metabolic rewiring and radiosensitization in SLC25A1 inhibited cancer cells. *Cell Death Discov* 2024;10:27.
 17. Liu B, Si W, Wei B, Zhang X, Chen P. PTP4A1 promotes Oral Squamous Cell Carcinoma (OSCC) metastasis through altered mitochondrial metabolic reprogramming. *Cell Death Discov* 2023;9:360.
 18. Hu W, Kong X, Cui Y, Wang H, Gao J, Wang X, *et al.* Surf4 locus protein 4 as a novel target for therapeutic intervention in cerebral ischemia-reperfusion injury. *Mol Neurobiol* 2023;61:2033-48.
 19. Shen Y, Gu HM, Qin S, Zhang DW. Surf4, cargo trafficking, lipid metabolism, and therapeutic implications. *J Mol Cell Biol* 2023;14:mjac063.
 20. Wang B, Shen Y, Zhai L, Xia X, Gu HM, Wang M, *et al.* Atherosclerosis-associated hepatic secretion of VLDL but not PCSK9 is dependent on cargo receptor protein Surf4. *J Lipid Res* 2021;62:100091.
 21. Zhai J, Han J, Li C, Guo F, Ma F, Xu B. High SURF4 expression is associated with poor prognosis of breast cancer. *Aging (Albany NY)* 2022;14:9317-37.

How to cite this article: Yuan W, Tan T, Lu L, Lu C, Zhang Y, Liu B. Surf4 4 regulates aerobic glycolysis to enhance proliferation, tumor stemness, invasion, and metastasis in oral squamous cell carcinoma. *CytoJournal*. 2024;21:60. doi: 10.25259/Cytojournal_137_2024.

HTML of this article is available FREE at:
https://dx.doi.org/10.25259/Cytojournal_137_2024

The FIRST **Open Access** cytopathology journal

Publish in *Cytojournal* and **RETAIN** your *copyright* for your intellectual property
Become Cytopathology Foundation (CF) Member at nominal annual membership cost

For details visit <https://cytojournal.com/cf-member>

PubMed indexed
FREE world wide **open access**
Online processing with rapid turnaround time.
Real time dissemination of time-sensitive technology.
 Publishes as many **colored high-resolution images**
 Read it, cite it, bookmark it, use RSS feed, & many----



CYTOJOURNAL

www.cytojournal.com

Peer-reviewed academic cytopathology journal





NextGen CelBloking™ Kits

**Frustrated with your cell blocks?
We have a better solution!**

Nano

Nano NextGen CelBloking™

Cell block kit to process single scattered cell specimens and tissue fragments of **any** cellularity.



PATENT PENDING



Pack #1



Pack #2

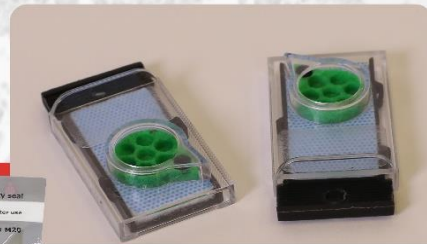
Micro

Micro NextGen CelBloking™

For cellular specimens (more than 1 ml concentrated specimen with Tissuecrit more than 50%)



PATENT PENDING



Pack #2

www.AVBioInnovation.com