



Research Article

Transbronchial brushing cytology and paired biopsy in endobronchial tuberculosis: A report of 72 cases focusing on the morphological features

Zhihua Lan, MS¹, Jing Zhang, MS¹, Xin Ma, MS¹, Rongfang He, MD¹, Qiang Zhao, MBBS¹, Fang Yang, MD²

¹Department of Pathology, The First Affiliated Hospital of Hengyang Medical School, Hengyang, China.

²Department of Anorectal Surgery in Traditional Chinese Medicine, The First Affiliated Hospital of Hengyang Medical School, University of South China, Hengyang, China.



***Corresponding author:**

Fang Yang,

Department of Anorectal Surgery in Traditional Chinese Medicine, The First Affiliated Hospital of Hengyang Medical School, University of South China, Hengyang, China.

yangfangsina@163.com

Received: 28 May 2023

Accepted: 17 August 2023

Published: 05 December 2023

DOI

10.25259/Cytojournal_35_2023

Quick Response Code:



ABSTRACT

Objectives: The objectives of this study were to review the transbronchial brushing cytology and histological specimens of endobronchial tuberculosis (EBTB) and to explore the morphological features, diagnostic pitfalls, and dilemmas.

Material and Methods: Transbronchial brushing cytology and concurrent biopsy specimens obtained between July 2017 and June 2020 were reviewed. EBTB was confirmed based on the clinical response to the anti-TB treatment in addition to the positive findings of at least one of the following methods: Acid-fast bacilli stain (AFB), auramine-rhodamine stain (A-R), detection of TB bacterial DNA (TB-DNA) by polymerase chain reaction, T-cell spot test (T-spot), and typical pathologic changes of TB on cytology or bronchoscopy biopsy. A total of 72 confirmed cases were studied.

Results: Of the 72 patients, 42/72 (58.3%) and 30/72 (41.7%) were female and male patients, respectively. Bronchoscopic findings revealed five subtypes of EBTB, including inflammation infiltration, ulceration necrosis, granulation hyperplasia, cicatrices stricture, and tracheobronchial malacia. AFB, A-R, TB-DNA, and T-spot were positive in 39, 26, 33, and 46 cases, respectively. The detection rate of necrosis in the cytological specimens (90.3%) was significantly higher than that in the biopsy specimens (77.8%; $P < 0.01$). The percentage of Langhans giant cells detected by cytology (13.9%) was significantly lower than that detected by the pathological examinations of the tissues (38.9%) ($P < 0.01$). The detection rates of metaplastic squamous cells and epithelioid cells showed no significant difference with respect to the cytology and biopsy findings. In addition to the two patients who had concurrent carcinomas, atypical cells were reported in nine patients through cytopathological diagnosis, among them two were suspected to have carcinomas, two were with the impression that spindle cell neoplasms could not be excluded, and the other five were considered as reactive atypia. Moreover, one biopsy could not rule out the well-differentiated squamous cell carcinoma.

Conclusion: Some morphological variations may cause challenges in cytological evaluation. Moreover, diagnostic dilemmas can occur even in the assessments of tissue pathology.

Keywords: Transbronchial brushing cytology, Histopathology, Endobronchial tuberculosis, Diagnostic pitfalls, Squamous atypia

INTRODUCTION

Tuberculosis (TB) is a leading cause of death worldwide. *Mycobacterium tuberculosis* (MTb) has infected approximately one-fourth of the world population with 1.7 billion estimated cases of

infection.^[1] Due to the high burden of TB in China, it has been classified as a notifiable disease.^[2]

The diagnosis of pulmonary lesions caused by endobronchial TB (EBTB) is conventionally based on sample retrieval using the fiberoptic bronchoscopy procedure. The brush material with or without alveolar lavage fluid is sent separately for laboratory examination and cytological assessment, whereas the biopsy sample is submitted for histopathological examinations. However, the cytological features of brushing materials obtained in EBTB have rarely been reported in the English literature.^[3] Practically, some morphological changes, especially squamous reactive atypia, may confuse cytologists and can be difficult to distinguish from the well-differentiated squamous cell carcinoma. Being one of the primary conditions in the differential diagnosis of TB, lung carcinoma is the leading cause of cancer-related death among men and the second-leading cause of cancer-related death among women worldwide.^[4] Moreover, China has the highest incidence, mortality rate, and disability-adjusted life years of lung carcinoma.^[5,6] Therefore, a review of the bronchoscopy performance, pathological examinations, and laboratory tests to summarize the morphologic features, diagnostic pitfalls, and dilemmas would help in reaching a final pathological diagnosis.

At our institution, EBTB diagnosis based on tissue biopsies and brush cytology specimens are conducted separately by a respiratory pathologist and cytologist, respectively. Therefore, this study aimed to explore the similarities and discordance of the two morphological examinations and determine the reasons for “atypical diagnosis” in the assessments.

MATERIAL AND METHODS

Study population and data collection

All patients diagnosed as EBTB between July 2017 and June 2020 at the First Affiliated Hospital, Hengyang Medical School, University of South China were enrolled and studied retrospectively. The inclusion criteria were as follows: (1) Visible endobronchial lesions on bronchoscopy; (2) both brushings and paired forceps biopsy specimens were obtained during the same bronchoscopy procedure; (3) positive results in at least one of the following examinations: Acid-fast bacilli stain (AFB) of the sputum smear or brushing materials or bronchoalveolar lavage, auramine-rhodamine (A-R) stain of the biopsy specimens, detection of TB bacteria DNA (TB-DNA) by polymerase chain reaction using sputum or bronchial perfusate, T-cell spot (T-spot), and typical TB pathologic changes on cytology or bronchoscopy biopsy; and (4) clinical regression of endobronchial lesions after anti-TB therapy. In addition, two cases that had concurrent lung carcinomas were also included in the study. The clinical features, endobronchial findings, laboratory examination results, cytological assessment, and paired biopsies of all

the patients were collected. The exclusion criteria included the following: (1) Prior empirical anti-TB treatment before bronchoscopic examination and (2) existence of missing value during data collection. Therefore, 72 cytological-histological pairs were included in our study.

Sample processing

The brushings were fixed in a cell storage solution (Guangzhou Anbiping Medical Company Technology Co., Ltd., Guangzhou, China) and processed using a sedimentation cell prep plus liquid-based cytology processor under the liquid-based preparation (LBP) system (LBP-2601, Guangzhou Anbiping Medical Company Technology Co., Ltd.). All cells were automatically sedimented onto a glass slide, forming a diagnostic area with a diameter of 13 mm.^[7] The area was stained using Papanicolaou stain. The biopsy tissue was embedded in paraffin, sliced into 3- μ m-thick sections, and stained with hematoxylin and eosin.

Data analysis

The bronchoscopic features in the database were reviewed by a pulmonary specialist to identify the subtypes.^[8] The histology and cytology specimens were reviewed separately by a respiratory pathologist and a cytologist, respectively. The detection rates of morphologic features such as metaplastic squamous cells, necrosis, epithelioid cells, and Langhans giant cells in both specimens were statistically analyzed using R language software (www.r-project.org; v4.0.5). McNemar's Chi-square test with continuity correction was performed to assess the differences in the detection rates of the histological and cytological features. Results were considered statistically significant at $P < 0.05$.

RESULTS

This study included 42 female and 30 male patients, with an average age of 58.1 years. Two patients had comorbid carcinoma, and 47 of the remaining 70 patients were correctly diagnosed with TB through bronchoscopy. However, endoscopic assessments varied in the other 23 patients, of which nine were suspected to have TB or carcinoma, nine were considered to have non-specific inflammation, four were identified as carcinoma, and one was diagnosed with TB or fungal infection. Subtype identification based on bronchoscopic findings demonstrated inflammation infiltration in nine patients, ulceration necrosis in 27 patients, granulation hyperplasia in 16 patients, cicatrices stricture in 17 patients, and trachea bronchial malacia in one patient.

Table 1 shows the positive results of various laboratory examinations. AFB, A-R, TB-DNA, and T-spot were positive in 39, 26, 33, and 46 cases, respectively. As presented in Table 2, the detection rate of necrosis in the cytological

assessments (90.3%) was significantly higher than that in the biopsy specimens (77.8%; $P < 0.01$) [Figure 1a]. In contrast, the detection rate of Langhans giant cells in brushing cytology (13.9%) was significantly lower than that in the biopsy specimens (38.9%; $P < 0.01$) [Figure 1b].

The detection rate of epithelioid cells in the cytological assessments (47.2%) showed no significant difference compared to that in the biopsy (61.1%; $P > 0.05$) [Figure 1c]. Either or both epithelioid cells and Langhans giant cells were defined as typical TB pathological changes, which showed

Table 1: Comparisons of positive results of various laboratory examinations.

AFB positive (n)		A-R positive (n)		TB-DNA positive (n)		T-SPOT positive (n)	
AFB only	4	A-R only	2	TB-DNA only	4	T-SPOT only	7
AFB/TB-DNA	6	A-R/AFB	3	TB-DNA/AFB	6	T-SPOT/AFB	5
AFB/T-SPOT	5	A-R/TB-DNA	1	TB-DNA/T-SPOT	5	T-SPOT/TB-DNA	5
AFB/A-R	3	A-R/T-SPOT	7	TB-DNA/A-R	1	T-SPOT/A-R	7
AFB/TB-DNA/T-SPOT	10	A-R/AFB/TB-DNA	1	TB-DNA/AFB/T-SPOT	10	T-SPOT/AFB/TB-DNA	10
AFB/TB-DNA/A-R	1	A-R/TB-DNA/T-SPOT	2	TB-DNA/T-SPOT/A-R	2	T-SPOT/AFB/A-R	6
AFB/T-SPOT/A-R	6	A-R/AFB/T-SPOT	6	TB-DNA/AFB/A-R	1	T-SPOT/TB-DNA/A-R	2
AFB/TB-DNA/T-SPOT/A-R	4	A-R/AFB/TB-DNA/T-SPOT	4	TB-DNA/AFB/T-SPOT/A-R	4	T-SPOT/AFB/TB-DNA/A-R	4
Total	39		26		33		46

AFB: Acid-fast bacillus stain, A-R: Auramine-rhodamine stain, TB-DNA: Detection of tuberculosis bacteria DNA by polymerase chain reaction; T-SPOT: T-cell spot test, The “/” in the abbreviation means combination of the methods showed positive results (i.e., AFB/TB-DNA: Both AFB and TB-DNA showed positive results). The rest double, triple, and quadruple abbreviations can be understood in the same manner

Table 2: Comparisons of the detection rate of morphologic features in brushing cytology and biopsy pathology (n [%]).

	Histology											
	Metaplastic squamous cells			Necrosis			Epithelioid cells			Langhans giant cells		
	Positive	Negative	Total	Positive	Negative	Total	Positive	Negative	Total	Positive	Negative	Total
Cytology												
Positive (%)	23 (31.9)	12 (16.7)	35 (48.6)	56 (77.8)	9 (12.5)	65 (90.3)	27 (37.5)	7 (9.7)	34 (47.2)	6 (8.3)	4 (5.5)	10 (13.8)
Negative (%)	5 (7.0)	32 (44.4)	37 (51.4)	0 (0)	7 (9.7)	7 (9.7)	17 (23.6)	21 (29.2)	38 (52.8)	22 (30.6)	40 (55.6)	62 (86.2)
Total (%)	28 (38.9)	44 (61.1)	72	56 (77.8)	16 (22.2)	72	44 (61.1)	28 (38.9)	72	28 (38.9)	44 (61.1)	72

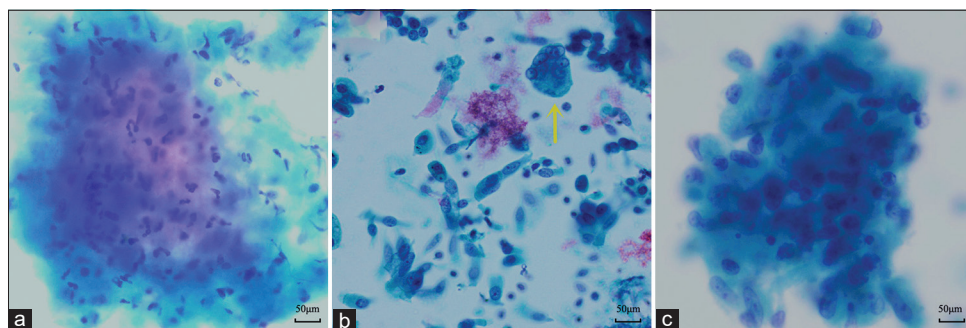


Figure 1: Representative cytomorphological features of endobronchial tuberculosis. Papanicolaou stain, $\times 400$. (a) Neutrophilic infiltration in a necrotic background. (b) Langhans giant cell (yellow arrow). (c) Epithelioid histiocytes with sprouted or a slightly curved nucleus.

higher sensitivity (66.7%) in biopsy histopathology than that in brushing cytology (48.61%). The specificity of the two methods was 100% due to the fact that other inflammatory diseases were not included in the study. Therefore, the positive predictive value of them was equal to sensitivity. Although metaplastic squamous cells were observed in 35/72 (48.6%) and 28/72 (38.9%) patients in the cytological assessments and histological evaluations, respectively [Figure 2a and b], the difference was not statistically significant ($P > 0.05$).

The contributing factors for the cytological diagnosis of “atypical cells” are summarized in Table 3. Besides, two patients with large amounts of short spindle cells could not be distinguished from spindle cell neoplasms, the other seven showed an atypical impression of metaplastic squamous cells, of which five were considered as reactive atypia and two were suspected as lung carcinomas. The reasons for the reactive atypia in the non-keratinizing squamous cells were as follows: Prominent nucleoli ($n = 2$) [Figure 2c and d], an enlarged nucleus with more than 2 times the volume of the surrounding nuclei ($n = 1$), and hyperchromasia ($n = 2$) [Figure 2e and f]. The two patients with suspicion of carcinomas showed some twisted or elongated keratinocytes in brushing cytology mimicking the keratinizing squamous cell carcinoma [Figure 2g].

Although the paired biopsy showed the continuous epithelial structure of metaplasia and reactive changes in most cases, scattered and distorted squamous cells were also encountered [Figure 2h]. Only one biopsy could not be excluded as well-differentiated squamous cell carcinoma because it showed a disorganized mass of distorted keratinocytes in the background of necrosis and scattered MTb [Figure 3a and b]. The lesion regressed during the follow-up antitubercular therapy. The comorbid malignant lesions in the two cases were confirmed by immunohistochemistry [Figure 4a and b]. One was adenocarcinoma and the other was squamous cell carcinoma.

DISCUSSION

To the best of our knowledge, this is the first retrospective clinicopathological study of EBTB focusing on morphological characteristics. In line with some previous studies, EBTB was more likely to be associated with female patients.^[9,10] Bronchoscopy is the most useful method to diagnose EBTB.^[9,11] In fact, most patients in our study with indefinite imaging results underwent fiberoptic bronchoscopy examination for further evaluation. Although the final review of bronchoscopic findings demonstrated that the distribution of various subtypes was in accordance with other studies,^[9]

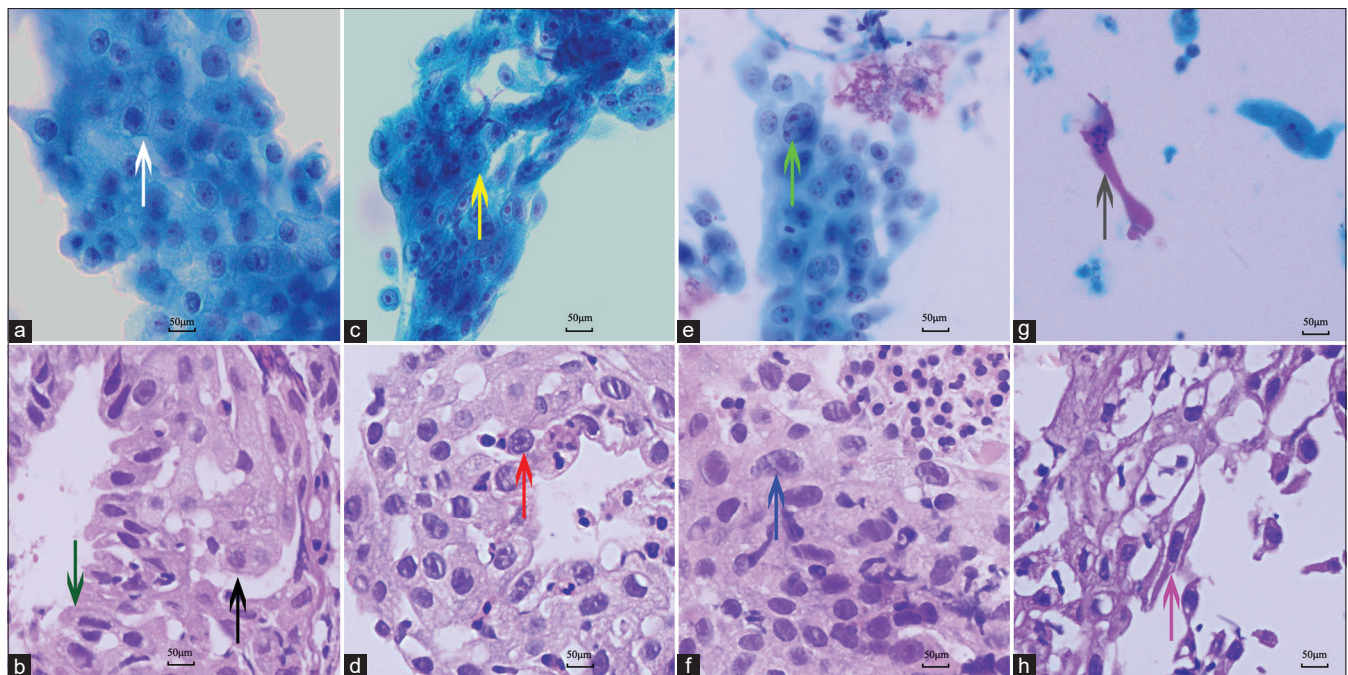


Figure 2: Cytomorphological and corresponding histological characteristics of squamous atypia in endobronchial tuberculosis. Papanicolaou stain, $\times 400$ (a, c, e, and g). Hematoxylin and eosin stain, $\times 400$ (b, d, f, and h). (a and b) Squamous metaplasia (white arrow in 2a and black arrow in 2b) derived from ciliated columnar epithelial cells (green arrow in 2b). (c) Brushing cytology showing prominent nucleoli (yellow arrow). (d) Mature squamous metaplasia exhibiting reactive cytologic atypia with prominent nucleoli (red arrow). (e and f) Cytopathology and histologic biopsy showing squamous cells with enlarged nucleus mimicking the tumor cells (Cyan arrow in 2e and blue arrow in 2f). (g and h) Scattered squamous cells exhibiting definite keratinization and twisted cytoplasm (gray arrow in 2g and pink arrow in 2h). Figures 2b, 2d, 2e, and 2h are the paired biopsies of 2a, 2c, 2f, and 2g, respectively.

Table 3: Review of the ten cases with diagnoses of “atypical cells.”

Case	Endoscope impression	Cytology diagnosis	Biopsy diagnosis	Contributing factors to “atypical cell”
1	TB	Atypical cells, favor squamous reactive atypia	TB	Abrupt enlarged nucleus in metaplastic squamous cells
2	TB	Atypical cells, favor squamous reactive atypia	TB	Metaplastic squamous cells showing slightly coarse chromatin granules
3	Non-special inflammation	Atypical cells, favor squamous reactive atypia	Chronic granulomatous inflammation	Metaplastic squamous cells demonstrating prominent nucleoli
4	TB	Atypical cells, favor squamous reactive atypia	TB	Metaplastic squamous cells showing slightly coarse chromatin granules
5	TB	Atypical cells suspected as malignancy	Necrosis	Twisted or elongated keratinocytes showing atypia
6	CA or TB	Atypical spindle cells, cannot exclude spindle cell neoplasm	TB	Aggregates of epithelioid histiocytes similar to neoplastic spindle cells
7	Non-special inflammation	Atypical spindle cells, not exclude spindle cell neoplasm	Chronic granulomatous inflammation	Aggregates of epithelioid histiocytes similar to neoplastic spindle cells
8	CA	Atypical cells suspected as malignancy	Non-special inflammation with some uncertain cells	Metaplastic squamous cells demonstrating prominent nucleoli
9	TB	Atypical cells, favor of squamous reactive atypia	TB	Twisted or elongated keratinocytes showing atypia
10	TB	Necrosis	Atypical squamous nests cannot exclude squamous cell CA	Twisted or elongated keratinocytes arranging in nests.

TB: Tuberculosis, CA: Carcinoma

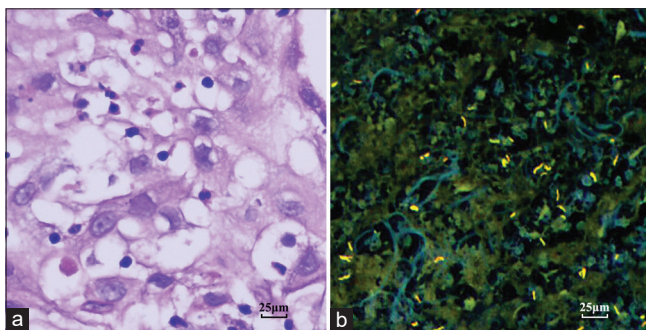


Figure 3: Dispersed necrosis within atypical squamous epithelium enriched with *Mycobacterium tuberculosis* (MTb). (a) Necrosis permeating into the space of the reactive squamous epithelium. Hematoxylin and eosin staining, $\times 400$ (b) MTb in the necrosis. Auramine-rhodamine stain, $\times 400$ figures 3a and b are for the same patient.

only 47 patients were initially diagnosed with EBTB. Based on the endoscopic findings, carcinomas were suspected in 13 patients, and malignancy was diagnosed in four of those patients. EBTB with the main characteristic of inflammatory infiltration is also easily inaccurately referred to as non-

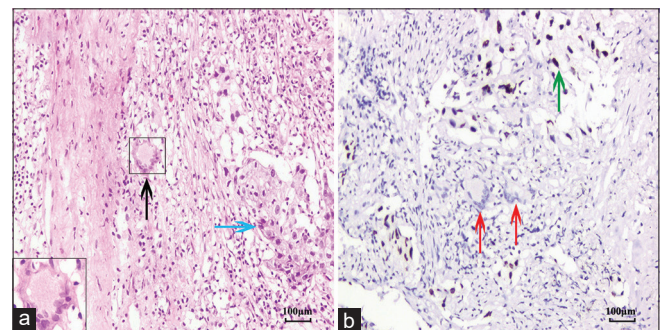


Figure 4: Histology and immunohistochemistry of endobronchial tuberculosis concurrent with non-small cell carcinoma. (a) Langhans giant cell (black arrow) and nests of carcinoma cells (blue arrow) (inset: At twice size). Hematoxylin and eosin staining, $\times 200$ (b) thyroid transcription factor 1 (TTF-1) positive adenocarcinoma cells (green arrow) arranged in solid pattern and around the Langhans giant cells (red arrows) (Envision, $\times 200$).

special inflammation and shows few typical TB morphologic features in biopsy histopathology. Mucosa hyperemia and edema are the main features of this subtype. Sometimes some granular nodules can be found under bronchoscopy. These

findings emphasize the importance of distinguishing TB infectious from malignancies and other infectious diseases in subsequent morphological and laboratory examinations.^[12]

EBTB also demonstrates reactive atypia on bronchial brushing cytology and biopsy pathology.^[3] However, most cases can be correctly diagnosed by a series of auxiliary examinations such as AFB of the sputum smear, brushing materials, or bronchioalveolar lavage; A-R on biopsy specimen; Tb-DNA of sputum or bronchial perfusate; and T-spot.^[13-15] Therefore, the morphological mimics seldom lead to eventual misdiagnoses. Nevertheless, the diagnosis of atypia may raise excessive concerns.

Atypia in cytology is mainly derived from morphological changes in squamous metaplasia. The normal responses of the columnar respiratory epithelium to long-standing stimulation lead to squamous metaplasia in most patients with EBTB. Limited sampling might be the reason for the absence of metaplasia in approximately half of the patients in the present study. Papanicolaou staining showed dense and cyanophilic cytoplasm in the metaplastic non-keratinizing squamous cells.^[3] Meanwhile, some keratinizing cells had a bright red color due to the Orange G stain. Atypia in some non-keratinizing squamous cells mainly appeared in the nucleus, presenting as sharply enlarged nuclei (the size of nuclei in the individual cell was almost twice as large as that in surrounding metaplastic cells), nuclear hyperchromasia, and prominent nucleoli. In addition, elongated, polygonal, twisted, and bichromatic cytoplasm in keratinocytes demonstrated atypia and mimicked keratinizing squamous cell carcinoma. Some of the above features have been reported in a previous study;^[3] however, features including sharply enlarged nucleus and prominent nucleolus in brushing cytology of EBTB have not been described in detail. An individual cell with enlarged nuclei could not be certainly suspected of malignancy; however, sheets of cells possessing prominent nucleoli may raise more concerns. Although the prominent nucleoli were more consistent with reactive/reparative changes, the same features could also be found in squamous cell carcinoma and adenosquamous carcinoma.^[15] In addition, the presence of a larger number of epithelioid cells in the observing field could confuse inexperienced cytologists and result in the consideration of spindle cell neoplasm.

Squamous atypia could not only result in a change of cytomorphology but also disrupt the normal epithelial structure into irregular squamous nests, which are usually surrounded by necrosis with large amounts of MTb. Compared to the only patient who was suspected of malignancy due to the irregular squamous nests in the biopsy, atypia was reported in nine patients in the cytological examination. The interpretations of the differences are as follows. First, the hematoxylin and eosin-stained biopsy specimens displayed the structure of mucosa and stroma

in most cases, but the brushing cytology exhibited clusters and scattered cells without continuity. Second, liquid-based cytological examination revealed the morphological characteristics of cells with greater resolution than biopsy pathology, due to better preservation techniques. This allowed for a more detailed analysis of the nucleus.^[16] The slightly atypical cellular morphology may easily lead to suspicion in the diagnosis; however, this superiority helps in diagnosing non-small cell lung carcinomas. Third, necrosis showed more interference in cytology than biopsy pathology during diagnosis. Fourth, the detection probability of classical morphological features, such as the Langhans giant cells, was lower in the cytology than in the biopsy pathology.

The diagnosis of TB based on the cytomorphology of bronchial brushing remains challenging for cytologists. However, endobronchial brushing cytology plays an important role in excluding malignant diseases and cannot be abandoned to avoid an uncertain diagnosis of chronic infection.^[17,18] Moreover, cytology in a few patients demonstrated Langhans giant cells which were a sign of EBTB and were not encountered in pair biopsy. In general, compared to the dysplastic cells from malignant lesions, squamous reactive atypia can be identified because the degree of atypia and the density of cells are insufficient. Therefore, a good understanding of the typical morphologic features and unusual squamous reactive atypia in exfoliative cytology of EBTB will contribute to an accurate diagnosis.

MTb has not been defined as a biological agent with carcinogenic risk by the International Agency for Research on Cancer.^[19] However, a large number of case-control studies demonstrated that chronic inflammation, immune regulation imbalance, and gene mutation caused by TB were related to the occurrence of lung cancer.^[20]

In our study, two cases had concurrent lung carcinoma. Therefore, cytomorphology of squamous atypia, regardless of its association with dysplasia, is worthy of in-depth study. In summary, atypia of squamous cells should be noted in the cytopathology report, but cautiousness in the diagnosis of malignancy is necessary. A correct interpretation of bronchial brushing cytology prevents over diagnosis and promotes accurate diagnosis, especially when etiological examinations show negative results. In rare cases, the diagnosis of EBTB should be considered even if cytology and paired biopsy does not exclude dysplasia. Subsequent examination and/or conformation based on clinical response to empirical anti-TB treatment would provide an accurate diagnosis.

Our investigation was mainly limited by the small sample size. Some patients who were lost to follow-up and cases without confirmation from laboratory examinations, despite showing regression or healing of lesions after empirical anti-TB treatment, were not included in the study. This could potentially introduce a selection bias. Furthermore,

no high sensitivity and specificity molecular test such as the detection of aberrant methylation changes in the short stature homeobox 2 (SHOX2) and ras association domain family member 1A (RASSF1A) genes were utilized in cases of bronchial TB presenting squamous atypia,^[21] which may serve as an effective approach to gain deeper insights into the diagnosis. In addition, Xpert mycobacterium tuberculosis/rifampicin resistance (Xpert MTB/RIF) and culture of MTb were not performed in our institution due to the lack of the relevant equipment during the study. Last but not least, the negative predictive value of the two pathological examinations could not be calculated because other bronchial inflammatory diseases were not included in the study.

SUMMARY

Our study characterized various atypical diagnoses on liquid-based transbronchial brushing cytology at our institution. The accurate identification of epithelioid cells and atypical squamous cells is essential. Although not significant, squamous atypia is a deceptive finding in infectious diseases and should be noted in the report for the appropriate clinical management. However, further examinations, especially those involving invasive methods, should be cautiously performed. In addition, multidisciplinary approaches for diagnosing uncertain cases are necessary.

FUNDING

This study was supported by the Natural Science Foundation of Hunan Province (Grant No. 2022JJ40395).

AUTHOR CONTRIBUTION STATEMENT

Z L: Study design, data collection and analysis, and manuscript drafting. J Z: Data collection and cytology review. X M: Literature analysis and discussion. R H: Pathological examination and manuscript review. Q Z: Analysis of tissue pathology. F Y: Study design, statistical analysis, and manuscript review. All authors have read and approved the final version of the manuscript. All authors have participated sufficiently in the work and agreed to be accountable for all aspects of the work.

DATA AVAILABILITY STATEMENT

The data analyzed in this study are available with the corresponding author and shall be provided on reasonable request.

COMPETING INTEREST STATEMENT BY ALL AUTHORS

The authors have no financial or non-financial conflicts of interest to declare regarding the publication of this paper.

AUTHORSHIP STATEMENT BY ALL AUTHORS

All authors affirm their involvement in the conception, development, and revision of the current work.

ETHICS STATEMENT BY ALL AUTHORS

This retrospective study was approved by the Research Ethics Board at the First Affiliated Hospital of Hengyang Medical School, University of South China (2022JJ0511004). The need for informed consent was waived by the Research Ethics Board.

LIST OF ABBREVIATIONS (In alphabetic order)

AFB - Acid Fast Bacilli Stain
 AR - Auramine Rhodamine Stain
 CA - Carcinoma
 EBTB - Endobronchial Tuberculosis
 IARC - International Agency for Research on Cancer
 LBC - Liquid Based Cytology
 MTb - Mycobacterium Tuberculosis
 TB- Tuberculosis
 TB-DNA - Tuberculosis Bacterial DNA (Deoxyribonucleic Acid)
 T-spot - T Cell Spot Test.

EDITORIAL/PEER REVIEW STATEMENT

To ensure the integrity and highest quality of cytojournal publications, the review process of this manuscript was conducted under a **double-blind model** (authors are blinded for reviewers and vice versa) through an automatic online system.

REFERENCES

1. Wang YS, Zhu WL, Li T, Chen W, Wang WB. Changes in newly notified cases and control of tuberculosis in China: Time-series analysis of surveillance data. *Infect Dis Poverty* 2021;10:16.
2. Chen W, Zhang H, Du X, Li T, Zhao YL. Characteristics and morbidity of the tuberculosis epidemic China. *China CDC Wkly* 2020;2:181-4.
3. Erozan Y, Ramzy I. Pulmonary cytopathology. In: *Essentials in cytopathology series*. New York: Springer Science Business; 2009.
4. Buja A, Rivera M, De Polo A, Brino ED, Marchetti M, Scioni M, *et al.* Estimated direct costs of non-small cell lung cancer by stage at diagnosis and disease management phase: A whole-disease model. *Thorac Cancer* 2021;12:13-20.
5. Deng Y, Zhao P, Zhou L, Xiang D, Hu J, Liu Y, *et al.* Epidemiological trends of tracheal, bronchus, and lung cancer at the global, regional, and national levels: A population-based study. *J Hematol Oncol* 2020;13:98.
6. Shao J, Wang G, Yi L, Wang C, Lan T, Xu X, *et al.* Deep learning empowers lung cancer screening based on mobile low-dose computed tomography in resource-constrained sites. *Front*

- Biosci (Landmark Ed) 2022;27:212.
7. Zhao J, Yao X, Song C, Wang C. A comparative study of two liquid-based preparation methods: Membrane-based and sedimentation in fine needle aspiration cytology diagnosis in thyroid nodules. *World J Surg Oncol* 2020;18:13.
 8. Chinese Medical Association. Diagnosis and treatment guideline for tracheobronchial tuberculosis. *Chin J Tuberc Respir Dis* 2012;35:581-7.
 9. Jung SS, Park HS, Kim JO, Kim SY. Incidence and clinical predictors of endobronchial tuberculosis in patients with pulmonary tuberculosis. *Respirology* 2015;20:488-95.
 10. Fu J, Li J, Liu Z, Zheng S, Li X, Ning X, *et al.* Sex-specific differences in the clinical profile among patients with tracheobronchial tuberculosis: A hospital-based cross-sectional study in Shenzhen, China. *Int J Gen Med* 2022;15:5741-50.
 11. Jiao AX, Sun L, Liu F, Rao XC, Ma YY, Liu XC, *et al.* Characteristics and clinical role of bronchoscopy in diagnosis of childhood endobronchial tuberculosis. *World J Pediatr* 2017;13:599-603.
 12. Itoh N, Shimizu J, Murakami H, Hida T. Pulmonary infections mimicking malignancy on bronchoscopy: A retrospective single-center study in Japan. *J Gen Fam Med* 2020;22:38-42.
 13. Chen QP, Ren SF, Wang XF, Wang MS. Comparison of bronchial brushing and sputum in detection of pediatric pulmonary tuberculosis. *Ital J Pediatr* 2016;42:11.
 14. Pai M, Denking CM, Kik SV, Rangaka MX, Zwerling A, Oxlade O, *et al.* Gamma interferon release assays for detection of mycobacterium tuberculosis infection. *Clin Microbiol Rev* 2014;27:3-20.
 15. Liu X, Hou XF, Gao L, Deng GF, Zhang MX, Deng QY, *et al.* Indicators for prediction of mycobacterium tuberculosis positivity detected with bronchoalveolar lavage fluid. *Infect Dis Poverty* 2018;7:22.
 16. Lan Z, Zhang X, Ma X, Hu Y, Zhang J, Yang F. Utility of liquid-based cytology on residual needle rinses collected from core needle biopsy for lung nodule diagnosis. *Cancer Med* 2021;10:3919-27.
 17. Michelow P, Omar T, Field A, Wright C. The cytopathology of mycobacterial infection. *Diagn Cytopathol* 2016;44:255-62.
 18. Cao C, Yu X, Zhu T, Jiang Q, Li Y, Li X. Diagnostic role of liquid-based cytology of bronchial lavage fluid in addition to bronchial brushing specimens in lung cancer. *Tumori* 2021;107:325-8.
 19. International Agency for Research on Cancer. IARC Monographs on the identification of carcinogenic hazard to humans: Preamble. Lyon: IARC, World Health Organization; 2019.
 20. Qin Y, Chen Y, Chen J, Xu K, Xu F, Shi J. The relationship between previous pulmonary tuberculosis and risk of lung cancer in the future. *Infect Agent Cancer* 2022;17:20.
 21. Zhang J, Huang H, Yu F, Bian Y, Wang R, Liu H, *et al.* A comprehensive diagnostic scheme of morphological combined molecular methylation under bronchoscopy. *Front Oncol* 2023;13:1133675.

How to cite this article: Lan Z, Zhang J, Ma X, He R, Zhao Q, Yang F. Transbronchial brushing cytology and paired biopsy in endobronchial tuberculosis: A report of 72 cases focusing on the morphological features. *CytoJournal*. 2023;20:45. doi: 10.25259/Cytojournal_35_2023

HTML of this article is available FREE at:
https://dx.doi.org/10.25259/Cytojournal_35_2023

The FIRST Open Access cytopathology journal

Publish in *CytoJournal* and RETAIN your copyright for your intellectual property

Become Cytopathology Foundation Member to get all the benefits

Annual membership fee is nominal US \$ 50 (US \$ 1000 for life)

In case of economic hardship it is free

For details visit <https://cytojournal.com/cf-member>

PubMed indexed

FREE world wide open access

Online processing with rapid turnaround time.

Real time dissemination of time-sensitive technology.

Publishes as many **colored high-resolution images**

Read it, cite it, bookmark it, use RSS feed, & many----



CYTOJOURNAL

www.cytojournal.com

Peer-reviewed academic cytopathology journal





NextGen CelBloking™ Kits

**Frustrated with your cell blocks?
We have a better solution!**

Nano

Nano NextGen CelBloking™

Cell block kit to process single scattered cell specimens and tissue fragments of **any** cellularity.



PATENT PENDING



Pack #1



Pack #2

Micro

Micro NextGen CelBloking™

For cellular specimens (more than 1 ml concentrated specimen with Tissuecrit more than 50%)



PATENT PENDING



Pack #1



Pack #2