



Research Article

Intraductal papillary mucinous neoplasms of the pancreas: Cytologic-histologic correlation study and evaluation of the cytologic accuracy in identifying high-grade dysplasia/invasive adenocarcinoma

Serenella Serinelli, MD, PhD¹, Kamal K. Khurana, MD¹

¹Department of Pathology, Suny Upstate Medical University, State University of New York, Syracuse, New York, United States.



***Corresponding author:**

Kamal K. Khurana,
Department of Pathology, Suny
Upstate Medical University,
State University of New York,
Syracuse, NY, United States.

khuranak@upstate.edu

Received: 08 September 2023

Accepted: 23 November 2023

Published: 31 January 2024

DOI

[10.25259/Cytojournal_71_2023](https://doi.org/10.25259/Cytojournal_71_2023)

Quick Response Code:



ABSTRACT

Objective: Intraductal papillary mucinous neoplasms (IPMNs) may be associated with invasive adenocarcinoma, low-grade dysplasia (LGD), or high-grade dysplasia (HGD). We aimed to review the cytologic-histologic correlation of cases with a histologic diagnosis of IPMN.

Material and Methods: A database search (January 2010–January 2021) was performed for resected IPMNs with preceding endoscopic ultrasound-guided fine-needle aspiration (FNA). Cytology slides were reviewed for the presence of benign, atypical, or malignant cells, and necrosis. Histologically, IPMNs were classified as benign (LGD) or malignant (HGD or adenocarcinoma).

Results: There were 41 patients with IPMN; 24 malignant and 17 benign. Sixteen of the 24 malignant IPMNs were accurately classified as malignant on cytology. There were eight false negatives and one false positive. Cytology yielded a sensitivity of 67% and a specificity of 94%. Among the 16 true positives with FNA diagnosis of adenocarcinoma, seven were IPMNs with HGD, and nine had invasive adenocarcinomas on histology. Cellular morphology and absence or presence of necrosis did not help distinguish HGD from adenocarcinoma on cytology ($P > 0.5$). Sampling errors and interpretative errors resulted in false-negative cases. Cytology yielded diagnoses related to IPMN in 73% of cases (30/41) and lack of identification of mucinous cells/mucinous background resulted in interpretative errors (9).

Conclusion: This study shows that there is a good correlation between cytopathology and surgical pathology diagnoses of IPMNs and that cytology is mostly able to recognize IPMN with HGD/adenocarcinoma. However, heterogeneity in areas of IPMN with HGD/adenocarcinoma may result in sampling errors yielding false-negative cases. Mucinous cells/background should raise the suspicion of IPMN on cytology, even when no neoplastic epithelium is present for the evaluation of dysplasia.

Keywords: Intraductal papillary mucinous neoplasm, Pancreas, Fine-needle aspiration, Adenocarcinoma, High-grade dysplasia

INTRODUCTION

Intraductal papillary mucinous neoplasms (IPMNs) are grossly visible, mucin-producing epithelial neoplasms occurring within the main pancreatic duct and/or its branches.^[1,2] They represent 20–50% of resected cystic pancreatic tumors and up to 5% of all pancreatic

neoplasms.^[3,4] They occur mostly in subjects between 25 and 94 years of age and are slightly more common in males. Radiologically, they are classified as main duct type, branch duct type, and mixed duct-type, depending on the duct(s) involved. These tumors are more common in the pancreatic head but can involve the entire pancreas and the ampulla of Vater. Most patients are asymptomatic but, when symptoms occur, they are usually related to pancreatic duct obstruction or low-grade pancreatitis (abdominal and/or back pain, anorexia, diabetes mellitus, and weight loss). The treatment of choice is surgical resection. Many patients with IPMN can be cured by complete resection, but some IPMNs evolve into invasive adenocarcinoma, usually of the colloid (mucinous) or tubular type.^[5,6] Compared with conventional ductal adenocarcinoma, IPMNs with invasive carcinoma have a better prognosis.^[7] The prognosis differs between IPMN not associated with invasive carcinoma (5-year survival rates higher than 85%) and IPMN with invasive carcinoma (5-year survival rates as low as 36%). Patients with IPMNs have also an increased incidence of synchronous or metachronous malignancies, particularly stomach and colon.

Preoperative diagnosis of IPMN is currently based on radiologic studies,^[8] pancreatic duct brushings/fine-needle aspiration (FNA) biopsy,^[9-11] and carcinoembryonic antigen (CEA) level, which is usually elevated. More recently, molecular/genetic/genomic studies have become critical for the diagnosis.^[12] On computed tomography (CT) scans, a dilated main pancreatic duct or single/multiple cysts representing dilated branch ducts are detected. Endoscopic retrograde cholangiopancreatography shows dilated ducts and/or filling defects due to papillary projections of neoplasm or mucus plugs. At magnetic resonance cholangiopancreatography, in addition to dilated ducts, mural nodules can be visualized, which may correspond to high-grade dysplasia (HGD)/carcinoma *in situ* or invasive carcinoma. Cytology shows small clusters and flat sheets of mucin-producing columnar cells. Papillary structures may also be seen. There is abundant, thick, and viscid mucus in the background in nearly all cases.^[3,10,13]

In resected specimens, pancreatic ducts appear dilated and filled with mucin and show friable papillary projections or nodules in the mucosa. Sometimes, single or multiple peripheral cysts that are connected to the main duct are detected. Invasive carcinomas usually arise adjacent to cystically dilated ducts; however, some invasive carcinomas arise elsewhere in the gland. Microscopically,^[1,2] ducts lined by a proliferation of flat or papillary mucinous epithelial cells are seen, in a background of dense fibrotic stroma. The epithelium can be classified into three subtypes: Gastric (the cells have basally located nuclei, slightly eosinophilic cytoplasm, and abundant apical mucin); intestinal (villous

papillae lined by cells with basophilic cytoplasm and enlarged, hyperchromatic pseudostratified nuclei, and by occasional goblet cells); and pancreaticobiliary (complex papillae lined by cells with moderate amphophilic cytoplasm and round, vesicular nuclei with prominent nucleoli). Dysplasia is now classified according to a two-tiered system. Low-grade dysplasia (LGD) is characterized by uniform cells with mild atypia and a lack of architectural complexity. HGD/carcinoma *in situ* shows marked architectural complexity, with prominent nuclear atypia, loss of polarity, and increased mitoses. About 60% of main duct IPMN and 15% of branch duct lesions are associated with an invasive component.

The preoperative diagnosis of IPMN and the distinction between invasive and non-invasive carcinomas are of critical importance for the subsequent patient management and prognosis. Neoadjuvant therapy may provide survival benefits in patients with invasive adenocarcinoma.^[14,15] Consequently in this study, we investigated (a) the cytologic-histologic correlation of cases with histologic diagnosis of IPMN at our institution and (b) the cytologic accuracy in identifying HGD/adenocarcinoma.

MATERIAL AND METHODS

The study was approved by the Institutional Review Board. A search of the laboratory information system of the Department of Pathology was performed to identify all cases with a surgical diagnosis of IPMN from January 2010 to January 2021. Among them, the cases with preoperative cytology studies performed within the preceding year were selected. The demographic, clinical (preoperative treatment, type of surgery), laboratory (preoperative CEA levels), radiology, cytopathology, and histopathology findings were collected. We did not have any molecular test in our data as at our institution molecular testing has been only added recently.

Histologic and cytologic slides were retrieved from the files of the hospital. Histology reports were examined, and the histology slides were reviewed for consistency in grading according to the current nomenclature.^[1] In cases where a heterogeneous epithelium was seen, the highest degree of atypia was used for classification.

The cytology specimens available for each patient were pancreatic duct brushings of dilated pancreatic duct and/or endoscopic ultrasound-guided FNAs of pancreatic cysts. Most of them consisted of direct smears stained using Papanicolaou (Pap) stain. Some specimens that were received as cyst fluid were processed as a cytospin or ThinPrep[®] preparation. All original cytology reports and cytology specimens were reviewed by the Pap Society of Cytopathology system for reporting pancreaticobiliary

cytopathology.^[13] The features of the epithelial cells were evaluated (benign, atypical, or malignant cells), including the presence/absence of papillary fragments, monolayered sheets, and single mucinous cells. The background was also assessed for extracellular mucin and necrosis. To summarize, if there was thick viscous extracellular mucin with cyst debris and no epithelial cells; then, the findings were considered consistent with neoplastic mucinous cysts. If in addition to thick mucinous material, there was mucinous epithelium showing columnar glandular cells with mucinous cytoplasm and papillary arrangement, then the cytologic findings were considered consistent with IPMN. In addition, the background was evaluated for necrosis and any cells with high-grade atypia.

For the first portion of the study (evaluation of cytologic-histologic correlation of cases with histologic diagnosis of IPMN), the original cytology diagnoses were compared with the histologic diagnoses, and the cases were classified as discrepant and not discrepant. Cytology diagnoses of IPMN, neoplastic mucinous cyst, and adenocarcinoma were considered non-discrepant. The remaining cytology diagnoses (benign cyst and “negative for malignancy”) were considered discrepant. For the discrepant cases, the type of error was determined after a review of the cytology features.

For the second portion of the study (cytologic accuracy in identifying HGD/adenocarcinoma in histologically confirmed IPMNs), IPMNs were histologically classified as benign (LGD) or malignant (HGD or adenocarcinoma). Cytologically, cases were classified as benign (negative for malignancy/atypical/IPMN) or malignant (IPMN with HGD/suspicious for adenocarcinoma/adenocarcinoma). The sensitivity and specificity of cytology in identifying malignant IPMNs were evaluated. For calculation purposes:

- True positive cases: Malignant on cytology and histology
- True-negative cases: Benign on cytology and histology.

In the false-negative and positive cases, the type of error was determined. Cytology specimen features (cellular morphology and necrosis) and histologic grade of the IPMN were compared using the Chi-square test.

RESULTS

41 cases were included in the study. Age ranged from 41 to 86 years at diagnosis, with 61% males (25/41) and 39% females (16/41). CEA levels at the time of cytology were available for 29 cases (range: 1.5–68,240 ng/mL), while, in the remaining cases, a CEA analysis was not requested by the clinicians at the time of the work-up. CEA level >200 ng/mL was detected in 38% (11/29) cases. In 13 cases (32%), radiology reports included IPMN in the differential diagnoses. 19 lesions (46%) were in the pancreatic head, eight (20%) in the body, six (15%) in the tail, three (7%)

in the neck, two (5%) in the ampulla, two (5%) in multiple areas of the pancreas, and one (2%) in an unspecified area. The specimens consisted of 32 cyst aspirates, six solid and cystic masses, and three main pancreatic duct brushings. The results of the two portions of the study are as follows.

Evaluation of cytologic-histologic correlation of cases with histologic diagnosis of IPMN

The original cytologic diagnoses compared with the final histologic diagnosis are outlined in Table 1. Cytology yielded diagnoses related to IPMN in 73% of cases (30/41): IPMN in one case, neoplastic mucinous cyst in 12, adenocarcinoma in 15 cases, adenocarcinoma versus IPMN with HGD in one case, and suspicious for adenocarcinoma in one case [Figure 1a-f].

The remaining 11 cases (27%) were signed out as negative for malignancy/benign cysts. A review of these cases [Table 2] revealed ten interpretative errors, with one case of adenocarcinoma possibly arising from IPMN and nine cases showing mucinous cells/mucinous background suggestive of mucinous neoplasm [Figure 2a and b]. The remaining case had no cytologic evidence of IPMN, but the radiologic impression of cystic neoplasm: was classified as a sampling error.

Cytologic accuracy in identifying HGD/adenocarcinoma in histologically confirmed IPMNs

24 cases were histologically malignant and 17 benign. The original cytologic diagnoses compared to the final histologic diagnoses are outlined in Table 3. 16 of the 24 malignant IPMNs were accurately classified as malignant on cytology. There were eight false negatives and one false positive [Figure 3a-j]. Cytology yielded a sensitivity of 67% and a specificity of 94%. Necrosis was identified on cytology in one case of HGD (1/7) and three adenocarcinomas (3/9). Cellular morphology and absence or presence of necrosis did not help distinguish HGD from adenocarcinoma on cytology ($P > 0.5$, Chi-square test). A review of the cytology of the eight false-negative cases revealed five sampling errors and three interpretative errors [Table 4].

DISCUSSION

IPMNs are cystic neoplasms of the exocrine pancreas arising in the pancreatic ducts. Pre-operative diagnosis of IPMNs is currently based on imaging, cytology, and CEA level. It is now widely recognized that the findings of cytology should be interpreted in the context of the radiologic and laboratory findings, to avoid misdiagnosis.^[16-19] For example, many branch duct IPMNs have a lining that is indistinguishable from that of normal gastric epithelium, so gastric contamination cannot always be excluded from cytology.^[20,21] The characteristic

Table 1: Cytologic-histologic correlation of cases with histologic diagnosis of IPMN – Comparison of original cytology and final histology diagnoses.

Histology diagnosis/Original cytology diagnosis	IPMN without dysplasia	IPMN with LGD	IPMN with HGD/carcinoma <i>in situ</i>	Invasive adenocarcinoma	Total
Negative for malignancy/benign cyst	-	8	3	-	11
NMC	3	5	2	2	12
IPMN	-	-	1 (focal)	-	1
IPMN with HGD/adenocarcinoma	-	1	7	9	17

IPMN: Intraductal papillary mucinous neoplasm, HGD: High-grade dysplasia, LGD: Low-grade dysplasia, NMC: Neoplastic mucinous cyst

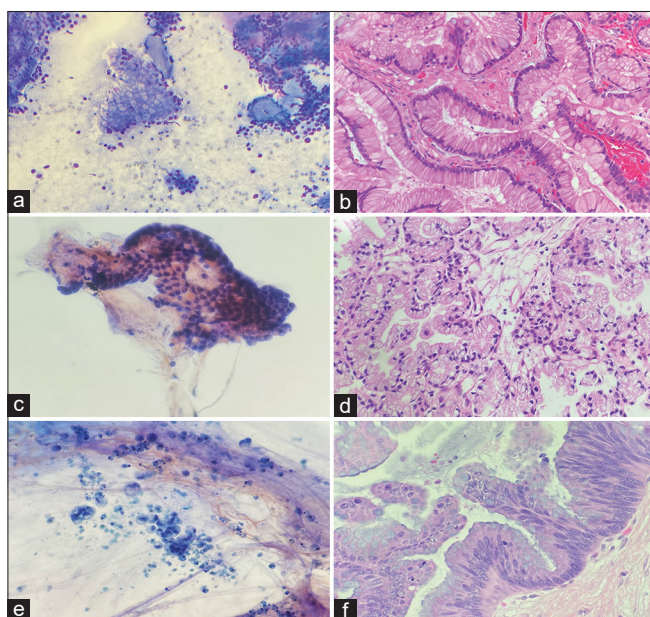


Figure 1: (a) An intraductal papillary mucinous neoplasm (IPMN) diagnosed on cytology (Diff-Quik stain, 100x). (b) Follow up histology confirmed the diagnosis of IPMN (Hematoxylin & eosin stain, 200x). (c) A case diagnosed as neoplastic mucinous cyst demonstrated mucinous background and rare fragment of gastric epithelium on cytology smears (Papanicolaou stain, 200x). (d) IPMN with low-grade dysplasia was noted in the resection specimen (Hematoxylin & eosin 200x). (e) An adenocarcinoma diagnosis on cytology (Papanicolaou stain, 200x). (f) IPMN with high-grade dysplasia was noted in subsequent histology (Hematoxylin & eosin stain, 200x).

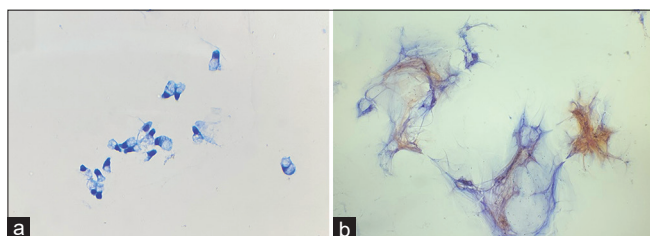


Figure 2: Findings usually missed in the discrepant cases with interpretative errors: (a) Mucinous epithelium, (Diff-Quik stain 200x) and (b) mucinous background (Papanicolaou stain, 200x).

ovarian-type stroma of mucinous cystic neoplasms is usually not apparent in FNA samples, and these entities can be cytologically indistinguishable from IPMNs.^[22] It is also important to consider that foci of HGD or invasive carcinoma can often be small and may not be sampled, leading to an underdiagnosis of malignancy in IPMNs. On the other hand, acute inflammation can lead to marked cytological atypia and can cause a false-positive diagnosis of malignancy.^[23] In cytologic specimens, it is often impossible to distinguish the cells of HGD from those of invasive carcinoma. For these reasons, the results of FNA should always be correlated with the clinical findings.

The present study conducted on 41 cases of histologically confirmed IPMNs showed that the CEA level alone was not a good predictor of these neoplasms (62% of cases showed a CEA level below 200 ng/mL, the threshold value) and radiology evaluation can also be inconclusive. There was a good correlation between cytopathology and surgical pathology diagnoses in IPMNs, with cytology yielding diagnoses related to IPMN in 73% of cases. The previous studies showed a percentage of cytology positivity ranging between 21% and 72%.^[10,24,25] The majority of our missed IPMNs were interpretive errors and showed mucin/mucinous cells on review. Layfield and Cramer^[26] have found that background mucin, by itself, is not predictive of a diagnosis of IPMN and does not distinguish it from other neoplasms and reactive changes. However, our findings support that a mucinous background on cytology should raise suspicion of IPMN, even when no epithelium is present.

The distinction between invasive and noninvasive carcinomas is of critical importance for patient management and prognosis. In the present study, cytology was able to recognize IPMN with HGD/adenocarcinoma in 67% of cases. Smith *et al.*^[27] found that cytology was able to recognize 52% of malignant IPMNs, while Inoue *et al.*^[28] found that 31% of IPMN patients with intraductal carcinomas were diagnosed as a malignant disease by cytology. As these tumors often show focally variable degrees of dysplasia, heterogeneity in areas of IPMN with HGD/adenocarcinoma may result in sampling errors yielding false-negative cases.

Table 2: Cytologic-histologic correlation of cases with histologic diagnosis of IPMN – Features of the discrepant cases with the type of error.

Case #	Age/sex	Cytology original diagnosis	Cytology after review	Surgical diagnosis	CEA (ng/mL)	Radiology impression	Site of the lesion	Neoadjuvant therapy	Type of surgery	Type of error
1	M/65	Negative for malignancy	IPMN benign mucinous epithelium and mucin	IPMN, LGD	9.8	Cystic neoplasm	Head	No	Partial pancreatectomy	Interpretative
2	F/82	Negative for malignancy	c/w IPMN abundant mucin present	IPMN, LGD	3.5	Mass	Ampulla	No	Biopsy	Interpretative
3	M/68	Negative for malignancy	Adenocarcinoma with mucin (possibly arising from IPMN)	IPMN, HGD	62.1	Dilation of the pancreatic duct	Tail	No	Partial pancreatectomy	Interpretative
4	M/45	Negative for malignancy	Negative for malignancy	IPMN, LGD	34.9	DDx: pseudocyst, cystic neoplasm, mesenteric cyst, abscess and necrotic mesenteric node	Tail	No	Partial pancreatectomy	Sampling
5	M/75	Negative for malignancy	IPMN benign mucinous epithelium and abundant; mucin identified	IPMN, LGD	241.6	Complex solid and cystic mass. DDx: IPMN, serous cystadenoma	Head	No	Total pancreatectomy	Interpretative
6	F/70	Benign cyst	IPMN benign mucinous epithelium and abundant mucin identified	IPMN, LGD	477.2	Multiple cystic lesions, highly concerning for IPMN	Head, body, tail	No	Total pancreatectomy	Interpretative
7	F/68	Benign cyst	c/w IPMN abundant mucin identified	IPMN, LGD	72.3	Complex cyst. DDx: mucinous or serous cystadenoma, IPMN	Tail	No	Partial pancreatectomy	Interpretative
8	M/61	Benign cyst	c/w IPMN abundant mucin identified	IPMN, LGD	41,074	Cystic lesion	Body	No	Partial pancreatectomy	Interpretative
9	M/70	Negative for malignancy	c/w IPMN abundant mucin identified	IPMN, HGD	475	Cystic lesion with septations, suggestive of IPMN	Head	No	Partial pancreatectomy	Interpretative
10	M/85	Negative for malignancy	c/w IPMN abundant mucin identified	IPMN, HGD	N/A	Mass, suspicious for carcinoma	Ampulla	No	Biopsy	Interpretative
11	M/69	Negative for malignancy	IPMN benign mucinous epithelium and abundant mucin identified	IPMN, LGD	1.5	Cystic lesions, suggestive of IPMN	Head	No	Partial pancreatectomy	Interpretative

IPMN: Intraductal papillary mucinous neoplasm, HGD: High-grade dysplasia, LGD: Low-grade dysplasia. c/w consistent with IPMN, CEA: Carcinoembryonic antigen, DDx: Differential diagnoses, N/A: Not available

Table 3: Cytologic accuracy in identifying HGD/adenocarcinoma – Overview of the original cytology and histology diagnoses.

Histology diagnosis/Original cytology diagnosis	Benign IPMN	Malignant IPMN	
		IPMN with HGD/carcinoma <i>in situ</i>	Invasive adenocarcinoma
Benign cases	16	6	2
Malignant cases	1	7	9
Total	17	13	11

IPMN: Intraductal papillary mucinous neoplasm, HGD: High-grade dysplasia

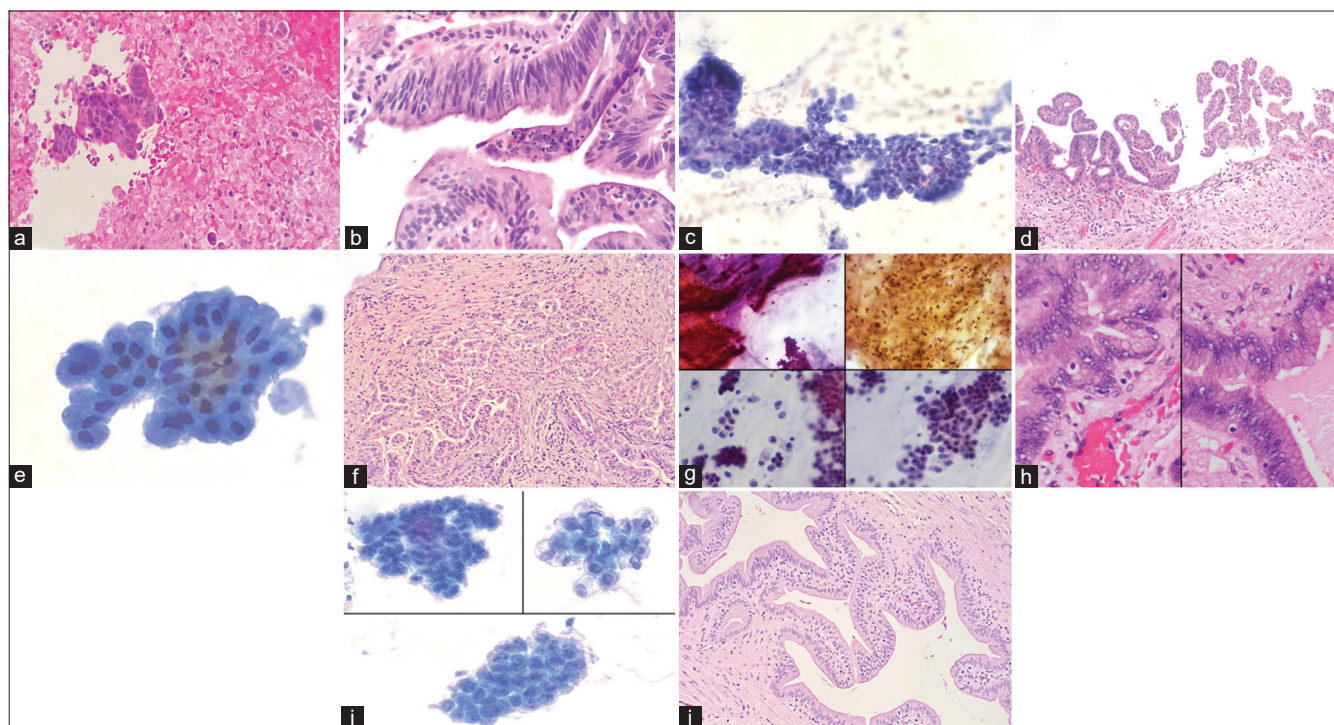


Figure 3: (a) A case showing necrosis in the cytology cell block, (Hematoxylin and eosin, 100x). (b) Intraductal papillary mucinous neoplasm (IPMN) with high-grade dysplasia (HGD) (markedly atypical cells with loss of polarity) was noted in subsequent resection (Hematoxylin and eosin, 200x). (c) An adenocarcinoma diagnosis on cytology (high N: C ratio, mitoses, marked nuclear atypia, (Papanicolaou stain 200x)) (d) IPMN with HGD was noted on follow up resection. (complex papillary proliferation of tumor cells) (Hematoxylin and eosin, 100x). (e) False-negative case (sampling error): It was diagnosed on cytology as benign (Papanicolaou stain, 400x). (f) An invasive adenocarcinoma was noted in resection (Hematoxylin and eosin, 200x). (g) False-negative case (interpretative error): It was diagnosed on cytology as negative for malignancy. On review, mucin, necrosis, and atypical cells with high a N: C ratio were seen (Papanicolaou stain, 200x). (h) Histology showed IPMN with HGD, (Hematoxylin and eosin, 400x). (i) False-positive case: This case was suspicious for adenocarcinoma on cytology (prominent nucleoli and nuclear overlapping) (Hematoxylin and eosin, 400x) (j) Histology showed IPMN with low-grade dysplasia. The area with high-grade features was presumably not sampled on histology, (Hematoxylin and eosin, 200x).

In the present study, HGD/carcinoma *in situ* and invasive adenocarcinoma were difficult to distinguish on cytology (by cellular morphology and absence/presence of necrosis). Conversely, Michaels *et al.*^[10] found that the presence of necrosis was the only feature that was significantly different between carcinoma *in situ* and invasive carcinoma ($P < 0.01$). However, they concluded that necrosis is not unique to IPMN with invasive carcinoma, and in their comparison of original

cytology with final histology diagnosis; they had classified 2 of 7 IPMN with carcinoma *in situ* and only 5 of 8 invasive adenocarcinoma as malignant, while the rest were classified as suspicious/atypical or negative. HGD is difficult to distinguish from invasive on cytology and in cases with HGD, a note for suspicion of invasive adenocarcinoma may be added.^[3,10,13] To improve communication of cytopathology results to the clinicians for patient management, we suggest using the terms

Table 4: Cytologic accuracy in identifying HGD/adenocarcinoma – Features of the false-negative cases with type of error.

Case #	Age/sex	Cytology original diagnosis	Cytology after review	Histology diagnosis	Type of error	CEA (ng/mL)	Radiology impression	Site of the lesion	Neoadjuvant therapy	Type of surgery
1	M/75	Debris; mucin	Consistent with IPMN. No evidence of high dysplasia.	IPMN, HGD	Sampling	N/A	IPMN	Head	No	Total pancreatectomy
2	M/78	IPMN	IPMN has no evidence of high dysplasia.	IPMN, low-grade dysplasia, and focal high-grade	Sampling	N/A	Mucinous cystic malignant lesion	Head	No	Partial pancreatectomy
3	F/79	Atypical cells; abundant mucin	Adenocarcinoma with mucin (possibly arising from IPMN). Atypical ductal cells represented tumor cells.	Adenocarcinoma arising from IPMN with HGD	Interpretative	31	Mass, suspicious for carcinoma	Head	No	Partial pancreatectomy
4	M/70	Atypical ductal cells; mucin	Adenocarcinoma versus IPMN with HGD. Atypical ductal cells represented dysplastic cells.	Adenocarcinoma arising from IPMN with HGD	Interpretative	N/A	N/A	Head	No	Partial pancreatectomy
5	F/67	Atypical cells	Abundant Mucin present. No evidence of high dysplasia.	IPMN, HGD	Sampling	N/A	Mass	Tail	No	Partial pancreatectomy
6	M/68	Negative for malignancy	HGD/mucinous Adenocarcinoma with mucin (possibly arising from IPMN)	IPMN, HGD	Interpretative	62.1	Dilation of the pancreatic duct	Tail	No	Partial pancreatectomy
7	M/70	Negative for malignancy	Consistent with IPMN. No evidence of high dysplasia. Abundant Mucin present	IPMN, high-grade dysplasia	Sampling	475	Cystic lesion with septations, suggestive of IPMN	Head	No	Partial pancreatectomy
8	M/85	Negative for malignancy	Consistent with IPMN. No evidence of high dysplasia. Abundant Mucin present	IPMN, high-grade dysplasia	Sampling	N/A	Mass, suspicious for carcinoma	Ampulla	No	Biopsy

IPMN: Intraductal papillary mucinous neoplasm, HGD: High-grade dysplasia, CEA: Carcinoembryonic antigen, N/A: Not available

“HGD cannot exclude invasive adenocarcinoma” in all IPMNs considered malignant on cytology.

There were some limitations to our study. The small number of cases prevented a more accurate subgroup analysis. Furthermore, we did not analyze the sensitivity and specificity of cytology in conjunction with radiology and laboratory results. Finally, since our study was retrospective, we did not evaluate the impact of cytologic evaluation on clinical management decisions.

CONCLUSIONS

This study shows that there is a good correlation between cytopathology and surgical pathology diagnoses in IPMNs and that cytology is mostly able to recognize IPMN with HGD/adenocarcinoma. Cytologic findings of mucinous background should raise the suspicion of IPMN, even when no epithelium is present, to avoid false-negative diagnoses. Since HGD/carcinoma *in situ* and invasive adenocarcinoma are difficult to distinguish based on cytology alone, we suggest using the terms “High-grade dysplasia, cannot exclude invasive adenocarcinoma” in all IPMNs considered malignant on cytology.

AVAILABILITY OF DATA AND MATERIALS

The datasets used and/or analyzed during the current study are available from the corresponding author on reasonable request.

ABBREVIATIONS

CEA – carcinoembryonic antigen
 CT – computed tomography
 FNA – fine-needle aspiration
 HGD – high-grade dysplasia
 IPMN – intraductal papillary mucinous neoplasm
 LGD – low-grade dysplasia
 N:C ratio – nuclear-cytoplasmic ratio

AUTHOR CONTRIBUTIONS

SS and KK designed the research study. SS and KK reviewed the cytology and histology slides. SS wrote the paper and KK reviewed and edited it. All authors contributed to editorial changes in the manuscript. All authors have participated sufficiently in the work and agreed to be accountable for all aspects of the work. All authors read and approved the final manuscript.

ETHICS APPROVAL AND CONSENT TO PARTICIPATE

The study was conducted in accordance with the Declaration of Helsinki, and the protocol was approved by the IRB of SUNY Upstate Medical University (approval number: 1804622-1, Date: 9.24.21).

Written informed consent was obtained from all the participants prior to the publication of this study.

FUNDING

None.

CONFLICT OF INTEREST

The authors declare no conflict of interest.

EDITORIAL/PEERREVIEW STATEMENT

To ensure the integrity and highest quality of CytoJournal publications, the review process of this manuscript was conducted under a **double-blind model** (authors are blinded for reviewers and vice versa) through the automatic online system.

REFERENCES

1. World Health Organization. WHO classification of tumours. Digestive system tumours. 5th ed. Geneva: World Health Organization; 2019.
2. Expertpath. Intraductal papillary mucinous neoplasm. Available from: <https://app.expertpath.com/document/intraductal-papillary-mucinous-neo-/01b476d1-7eb0-4ff2-9a51-fbb4d69675fe> [Last accessed on 2022 Aug 21].
3. Klöppel G, Basturk O, Schlitter AM, Konukiewitz B, Esposito I. Intraductal neoplasms of the pancreas. *Semin Diagn Pathol* 2014;31:452-66.
4. Tanaka M. Intraductal papillary mucinous neoplasm of the pancreas: Diagnosis and treatment. *Pancreas* 2004;28:282-8.
5. Adsay NV, Conlon KC, Zee SY, Brennan MF, Klimstra DS. Intraductal papillary-mucinous neoplasms of the pancreas: An analysis of *in situ* and invasive carcinomas in 28 patients. *Cancer* 2002;94:62-77.
6. Adsay NV, Pierson C, Sarkar F, Abrams J, Weaver D, Conlon KC, *et al.* Colloid (mucinous noncystic) carcinoma of the pancreas. *Am J Surg Pathol* 2001;25:26-42.
7. Maire F, Hammel P, Terris B, Olschwang S, O’Toole D, Sauvanet A, *et al.* Intraductal papillary and mucinous pancreatic tumour: A new extracolonic tumour in familial adenomatous polyposis. *Gut* 2002;51:446-9.
8. Lim JH, Lee G, Oh YL. Radiologic spectrum of intraductal papillary mucinous tumor of the pancreas. *Radiographics* 2001;21:323-37.
9. Hirabayashi K, Saika T, Nakamura N. Background features in the cytology of pancreatic neoplasms. *DEN Open* 2022;2:e105.
10. Michaels PJ, Brachtel EF, Bounds BC, Brugge WR, Pitman MB. Intraductal papillary mucinous neoplasm of the pancreas: Cytologic features predict histologic grade. *Cancer* 2006;108:163-73.
11. Arnelo U, Siiki A, Swahn F, Segersvärd R, Enochsson L, del Chiaro M, *et al.* Single-operator pancreatoscopy is helpful in the evaluation of suspected intraductal papillary mucinous neoplasms (IPMN). *Pancreatology* 2014;14:510-4.

12. Ozcan K, Klimstra DS. A review of mucinous cystic and intraductal neoplasms of the pancreatobiliary tract. *Arch Pathol Lab Med* 2022;146:298-311.
13. Pitman MB, Layfield LJ. The Papanicolaou Society of cytopathology system for reporting pancreaticobiliary cytology. Ch. 6. Berlin/Heidelberg, Germany: Springer; 2015: 45-62.
14. Duconseil P, Périnel J, Autret A, Adham M, Sauvanet A, Chiche L, *et al.* Resectable invasive IPMN versus sporadic pancreatic adenocarcinoma of the head of the pancreas: Should these two different diseases receive the same treatment? A matched comparison study of the French Surgical Association (AFC). *Eur J Surg Oncol* 2017;43:1704-10.
15. Springfield C, Ferrone CR, Katz MH, Philip PA, Hong TS, Hackert T, *et al.* Neoadjuvant therapy for pancreatic cancer. *Nat Rev Clin Oncol* 2023;20:318-37.
16. Delatour NR, Policarpio-Nicolas ML, Yazdi H, Islam S. Fine needle aspiration biopsy for preoperative workup of pancreatic cystic neoplasms: Report of 4 cases. *Acta Cytol* 2007;51:925-33.
17. Kim HS, Jang JY. Management algorithms for pancreatic cystic neoplasms. *Arch Pathol Lab Med* 2022;146:322-9.
18. Lee SJ, Park SY, Hwang DW, Lee JH, Song KB, Lee W, *et al.* Surgical decisions based on a balance between malignancy probability and surgical risk in patients with branch and mixed-type intraductal papillary mucinous neoplasm. *J Clin Med* 2020;9:2758.
19. Adsay V, Mino-Kenudson M, Furukawa T, Basturk O, Zamboni G, Marchegiani G, *et al.* Pathologic evaluation and reporting of intraductal papillary mucinous neoplasms of the pancreas and other tumoral intraepithelial neoplasms of pancreatobiliary tract: Recommendations of Verona consensus meeting. *Ann Surg* 2016;263:162-77.
20. Abdelkader A, Hunt B, Hartley CP, Panarelli NC, Giorgadze T. Cystic lesions of the pancreas: Differential diagnosis and cytologic-histologic correlation. *Arch Pathol Lab Med* 2020;144:47-61.
21. Adsay NV, Kloppel G, Fukushima N. Intraductal neoplasms of the pancreas. In: Bosman FT, Carneiro F, Hruban RH, Theise ND, editors. WHO classification of tumors. Lyon: WHO Press; 2010. p. 304-13.
22. Stelow EB, Stanley MW, Bardales RH, Mallery S, Lai R, Linzie BM, *et al.* Intraductal papillary-mucinous neoplasm of the pancreas. The findings and limitations of cytologic samples obtained by endoscopic ultrasound-guided fine-needle aspiration. *Am J Clin Pathol* 2003;120:398-404.
23. Zhai J, Sarkar R, Ylagan L. Pancreatic mucinous lesions: A retrospective analysis with cytohistological correlation. *Diagn Cytopathol* 2006;34:724-30.
24. Chen X, Ustun B, Bernstein J, Aslanian H, Chhieng D, Cai G. Fine needle aspiration diagnosis of mucinous cystic neoplasms and intraductal papillary mucinous neoplasms of the pancreas: Cytomorphology, CEA level and K-RAS mutation status. *Modern Pathol* 2013. Available at: <https://www.nature.com/articles/modpathol20135.pdf>
25. Maire F, Couvelard A, Hammel P, Ponsot P, Palazzo L, Aubert A, *et al.* Intraductal papillary mucinous tumors of the pancreas: The preoperative value of cytologic and histopathologic diagnosis. *Gastrointest Endosc* 2003;58:701-6.
26. Layfield LJ, Cramer H. Fine-needle aspiration cytology of intraductal papillary-mucinous tumors: A retrospective analysis. *Diagn Cytopathol* 2005;32:16-20.
27. Smith AL, Abdul-Karim FW, Goyal A. Cytologic categorization of pancreatic neoplastic mucinous cysts with an assessment of the risk of malignancy: A retrospective study based on the Papanicolaou Society of Cytopathology guidelines. *Cancer Cytopathol* 2016;124:285-93.
28. Inoue H, Tsuchida A, Kawasaki Y, Fujimoto Y, Yamasaki S, Kajiyama G. Preoperative diagnosis of intraductal papillary-mucinous tumors of the pancreas with attention to telomerase activity. *Cancer* 2001;91:35-41.

How to cite this article: Serinelli S, Khurana KK. Intraductal papillary mucinous neoplasms of the pancreas: Cytologic-histologic correlation study and evaluation of the cytologic accuracy in identifying high-grade dysplasia/invasive adenocarcinoma. 2024;21:6. doi: 10.25259/Cytojournal_71_2023

HTML of this article is available FREE at:
https://dx.doi.org/10.25259/Cytojournal_71_2023

The FIRST **Open Access** cytopathology journal

Publish in *Cytojournal* and **RETAIN** your *copyright* for your intellectual property
Become Cytopathology Foundation (CF) Member at nominal annual membership cost

For details visit <https://cytojournal.com/cf-member>

PubMed indexed
FREE world wide **open access**
Online processing with rapid turnaround time.
Real time dissemination of time-sensitive technology.
 Publishes as many **colored high-resolution images**
 Read it, cite it, bookmark it, use RSS feed, & many----



CYTOJOURNAL

www.cytojournal.com

Peer -reviewed academic cytopathology journal





NextGen CelBloking™ Kits

**Frustrated with your cell blocks?
We have a better solution!**

Nano

Nano NextGen CelBloking™

Cell block kit to process single scattered cell specimens and tissue fragments of **any** cellularity.



PATENT PENDING



Pack #1



Pack #2

Micro

Micro NextGen CelBloking™

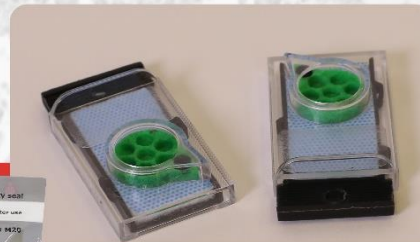
For cellular specimens (more than 1 ml concentrated specimen with Tissuecrit more than 50%)



PATENT PENDING



Pack #1



Pack #2

www.AVBioInnovation.com