

SUPPLEMENTARY TABLES

Supplementary Table 1: Antibodies used in this work.

Antibodies	Manufacturer	Place of origin	Number	Usage	Dilution ratio
LC3B	Proteintech	China	18725-1-AP	WB, IF	1:1000 1:50
GAPDH	Proteintech	China	60004-1-Ig	WB	1:3000
SREBF 1	Proteintech	China	14088-1-AP	WB, IHC, IF	1:1000 1:50 1:50
Beclin-1	Proteintech	China	66665-1-Ig	WB	1:1000
HRP-conjugated Goat Anti-Mouse IgG	Proteintech	China	SA00001-1	WB	1:2000
HRP-conjugated Goat Anti-Rabbit IgG	Proteintech	China	SA00001-2	WB	1:2000

GAPDH: Glyceralde-hyde-3-phosphate dehydrogenase, HRP: Horseradish peroxidase, IgG: Immunoglobulin G, SREBF 1: Sterol Regulatory Element Binding Transcription Factor 1, WB: Western blot, IHC: Immunohistochemistry, IF: Immunofluorescence

Supplementary Table 2: Reagents used in this work.

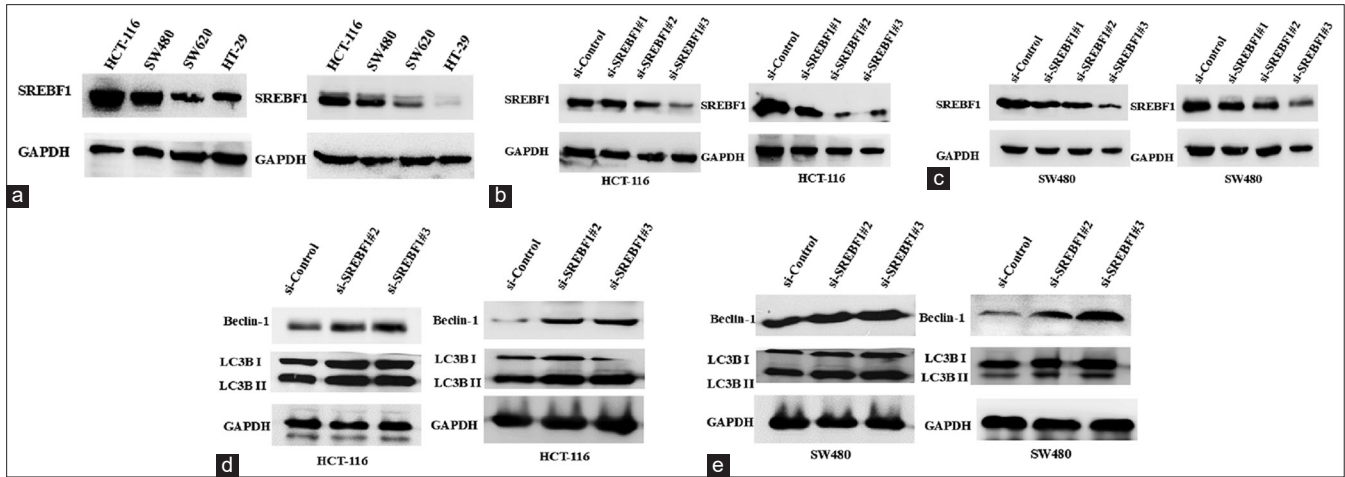
Reagents	Catalog number	Place of origin	Manufacturer
Dulbecco's Modified Eagle Medium (DMEM) cell liquid culture medium	11995065	USA	GIBCO
Opti-minimum essential medium (Opti-MEM) liquid culture medium	31985070	USA	GIBCO
Fetal bovine serum	A5670701	USA	GIBCO
Penicillin/Streptomycin	15140122	USA	GIBCO
Bicinchoninic acid assay (BCA) Protein Quantitative	CW0014S	China	Cwbio
Sodium dodecyl sulfate (SDS) gel preparation kit	CW0022S	China	Cwbio
Skim milk	232100	USA	BD company
EdU reagent kit	C10310-1	China	RiboBio
Lipofectamine 3000	L3000015	USA	ThermoFisher
Dimethyl sulfoxide (DMSO)	D8371	China	solarbio
CCK8	PF00004	China	Proteintech
Immobilon [®] -P polyvinylidene fluoride (PVDF) membrane	IPVH00010	Ireland	Merck Millipore Ltd
Western semi-dry Transfer buffer	P0021C	China	Beyotime
Hematoxylin	H8070	China	Solarbio
BeyoECL Star	P0018AS	China	Beyotime

EdU: 5-ethynyl-2'-deoxyuridine, CCK8: Cell counting kit-8

Supplementary Table 3: Instruments used in this work.

Reagents	Place of origin	Manufacturer
Cell culture incubator	USA	ThermoFisher
Microplate reader	Switzerland	Tecan
Optical inverted microscope	Japan	Olympus
Fluorescence upright microscope	Japan	Olympus
electrophoresis apparatus	USA	BioRad
Semi dry transfer printer	USA	BioRad
tabletop centrifuge	Japan	HITACHI
-80°C ultra-low temperature refrigerator	USA	ThermoFisher
Cell Counter	USA	Countstar
Electronic Precision Balance	USA	BioRad

SUPPLEMENTARY FIGURE



Supplementary Figure 1: Repeat experiments of western blot. (a) Screening colon adenocarcinoma cells with significant SREBF1 expression through western blot, Glyceralde-hyde-3-phosphate dehydrogenase (GAPDH) was used as a loading control. (b-c) To verify the transfection efficacy of different si-SREBF1 sequences through western blot, GAPDH was used as a loading control. (d-e) Detection of the autophagy markers before and after silencing SREBF1 through western blot and GAPDH was used as a loading control.