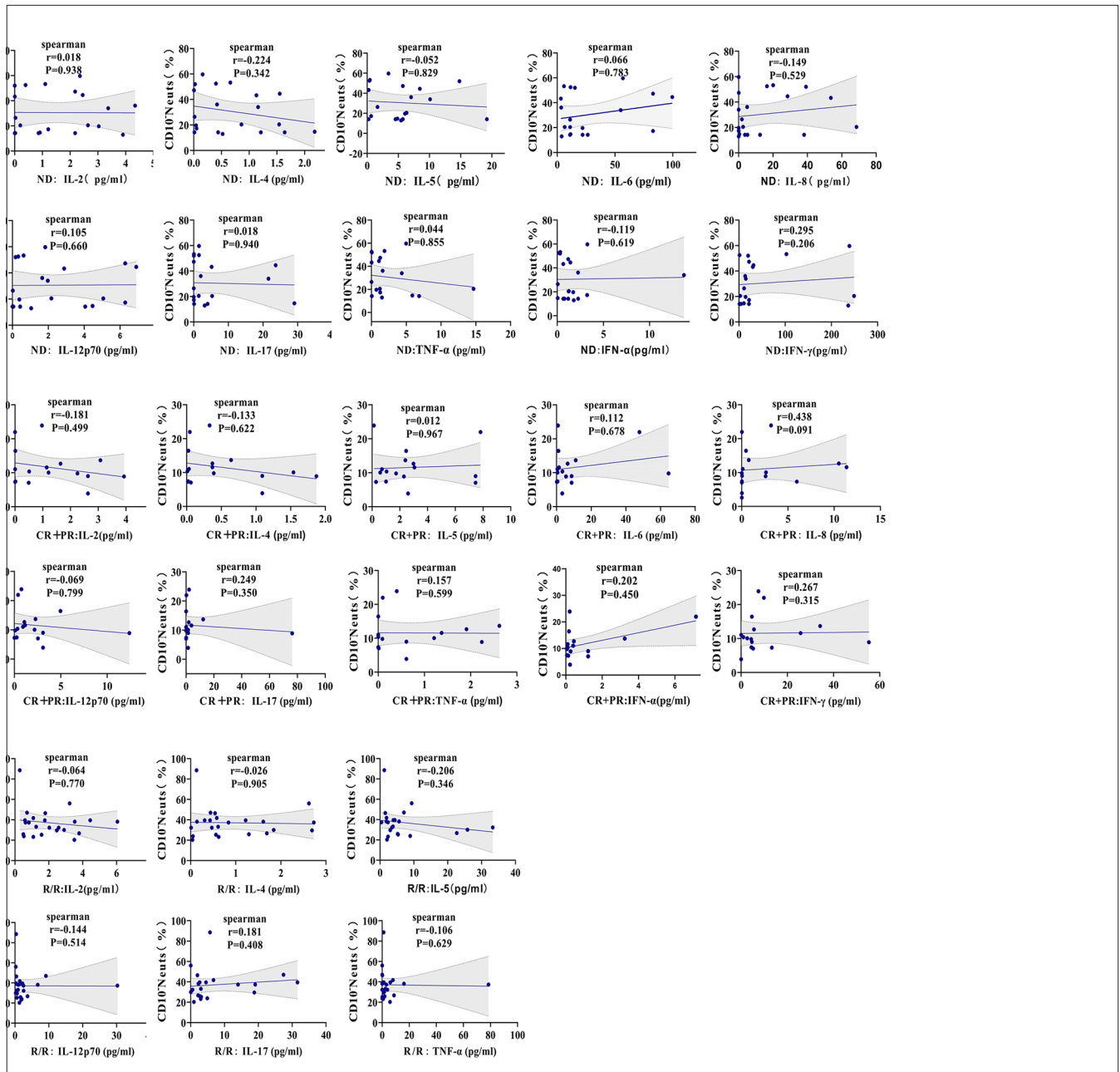
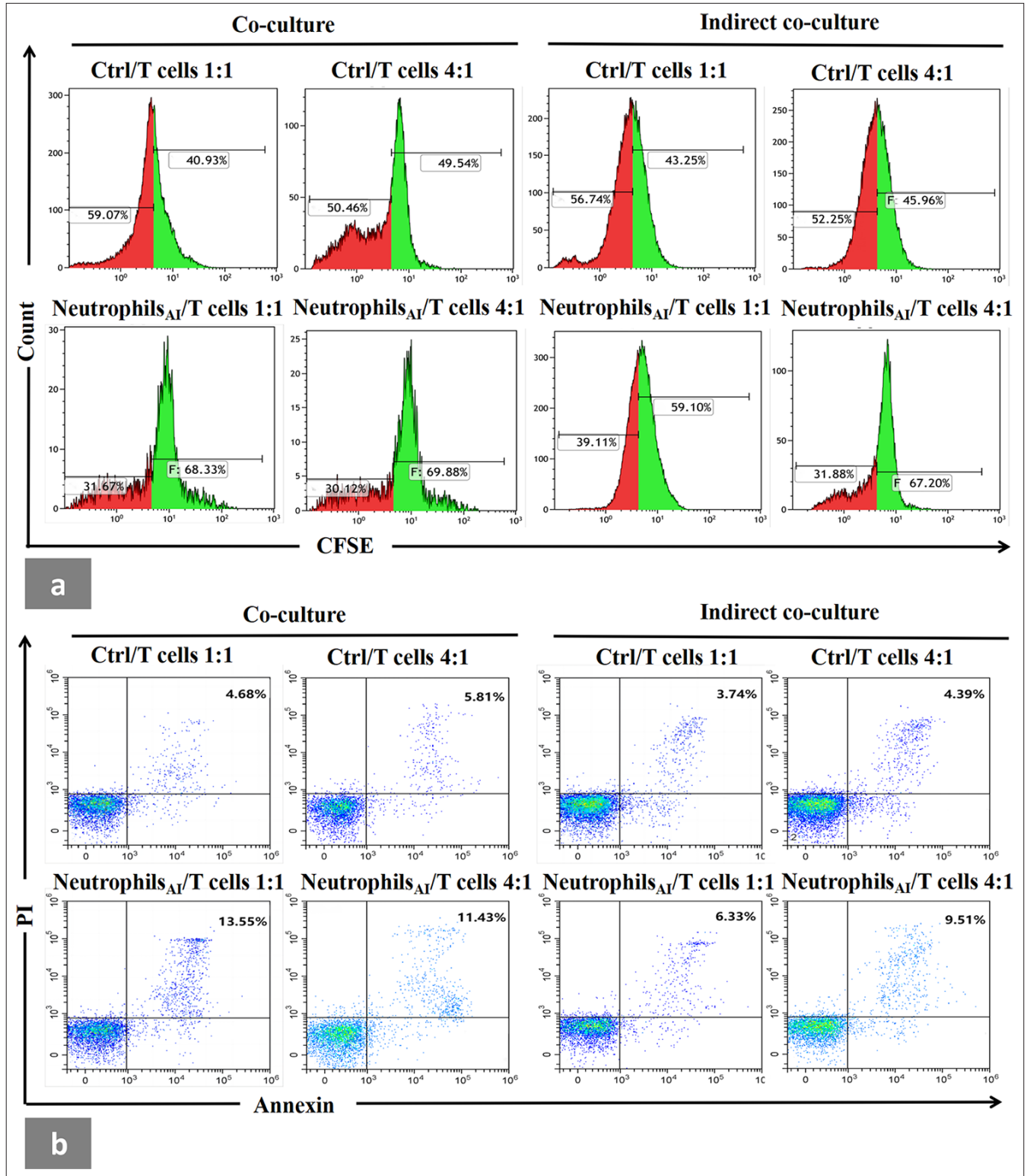


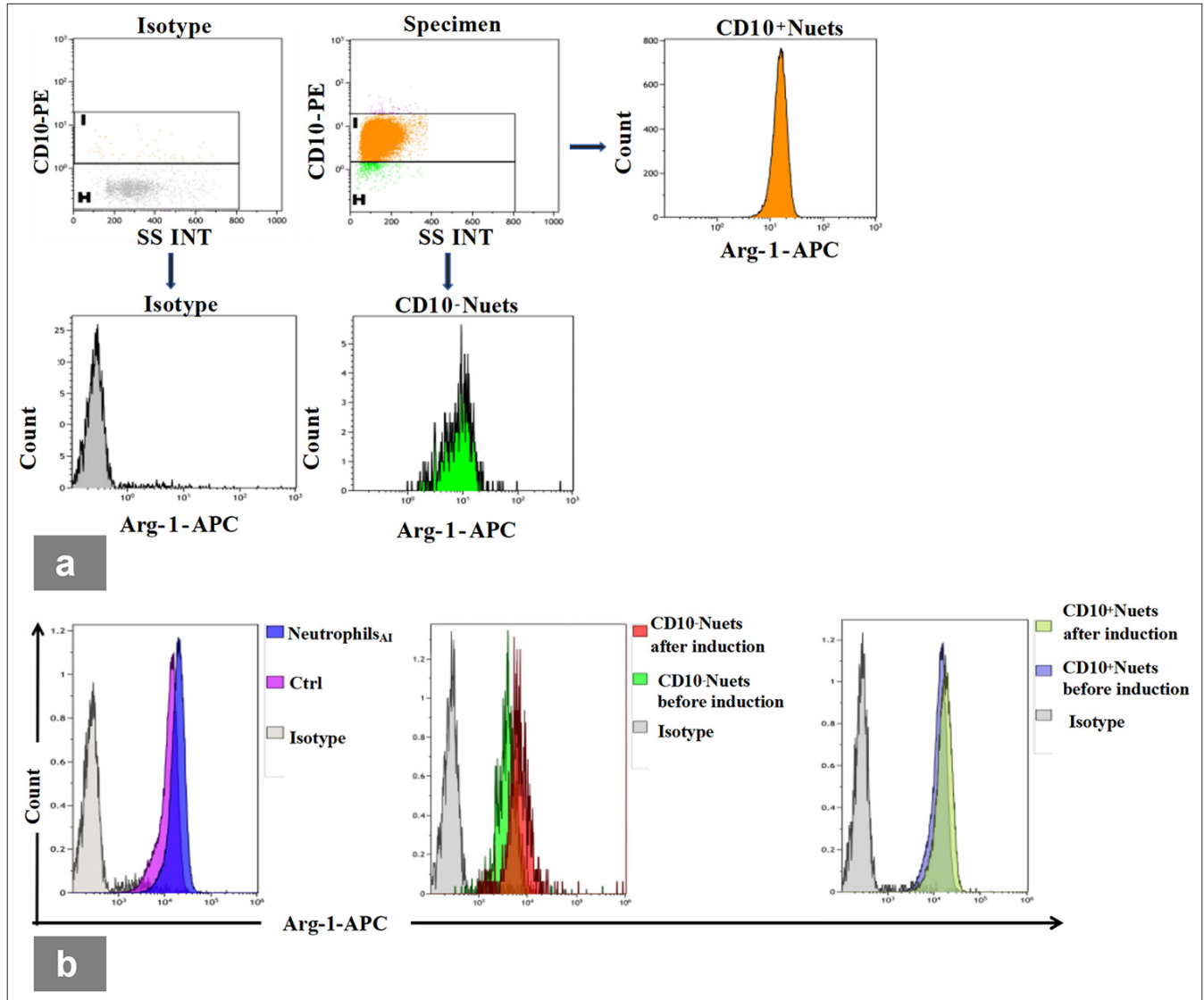
SUPPLEMENTARY



Supplemental Figure 1: Correlation analysis evaluating the relationship between CD10⁺ neutrophil and cytokines. (a) Correlation between CD10⁺ neutrophil percentage and cytokines in ND group of B-NHL patients. (b) Correlation between CD10⁺ neutrophil percentage and cytokines in CR/PR group of B-NHL patients. (c) Correlation between CD10⁺ neutrophil percentage and cytokines in R/R group of B-NHL patients. ND: Newly diagnosed, CR/PR: Complete remission and partial remission, R/R: Relapsed/refractory, B-NHL: B-cell non-Hodgkin lymphoma, CD10⁺ neutrophils: CD45⁺CD33⁺CD14⁺HLA-DR⁺CD10⁺ cells, IL: Interleukin, TNF- α : Tumor necrosis factor alpha, IFN- α : Interferon alpha, IFN- γ : Interferon gamma.



Supplemental Figure 2: Suppression of induced neutrophils on autologous CD3⁺T cells. (a) Representative flow cytometry data of CD3⁺T cell proliferation experiment from one individual in the co-culture or indirect co-culture system. The red area represented the proliferating CD3⁺T cell fraction. (b) Representative flow cytometry data of CD3⁺T cell apoptosis experiment from one individual in the co-culture or indirect co-culture system. Apoptotic T cells were marked as CD3⁺/Annexin⁺/PI⁺. CFSE: Carboxyfluorescein succinimidy ester, Ctrl: Neutrophils before induction, Neutrophils_{AI}: Neutrophils after induction.



Supplemental Figure 3: Gating strategy of distinguishing CD10⁻neutrophil and CD10⁺neutrophil by flow cytometry analysis. (a) Isotype control antibody (Isotype) was taken as a negative control. CD10⁻neutrophil represented in gate H, while CD10⁺neutrophil represented in gate I. (b) Representative flow cytometry plots of intracellular Arg-1 fluorescence intensity in neutrophils before and after induction from the same specimen. The intracellular expression of Arg-1 in neutrophils after induction for 48 h presented higher levels than neutrophils before induction, but the expression of Arg-1 was dominated by the CD10⁻neutrophil population after induction, but not CD10⁺neutrophil. Ctrl: Neutrophils before induction, CD10⁻neutrophil: CD45⁺CD33⁺CD14⁻HLA-DR⁻CD10⁻cells, CD10⁺neutrophil: CD45⁺CD14⁻CD33⁺HLA-DR⁻CD10⁺cells, Arg-1-APC: Arginase-1-allophycocyanin, SS INT: Side scatter integral.